

**published by garlic press
liverpool 2002**

71 prenton road west. wirral. CH42 9PZ tel +44 (0) 151 608 7006

designed by shedkm ltd © 2002

ISBN 1-904099-01-7



shedkm - a design studio born on a summer afternoon
and grown to a balanced architectural entity in five hectic years.
from obscurity to national award winning status, shedkm's
particular brand of architectural logic has brought together a group
of students and graduates, mainly from liverpool and john moores
universities, into a friendly dedicated studio in liverpool's cultural
ropewalks quarter where graphic designers, actors, poets and
musicians mingle freely with engineers, architects
and new wave developers

shedkm's method is simple - take a problem, expose the parts, put
together a solution based on simplicity, logic and style... more than
this, be enthusiastic - keep to modernist principles and
enjoy being architects

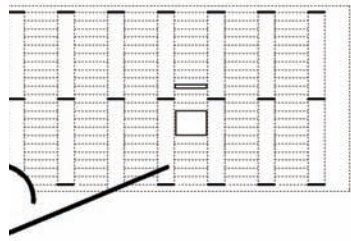
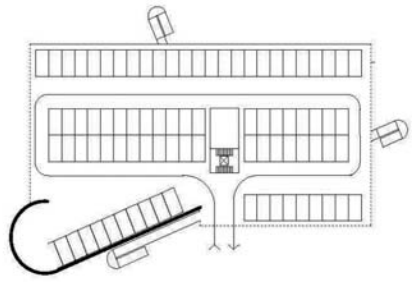
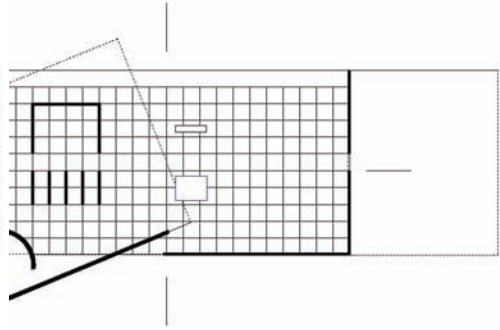
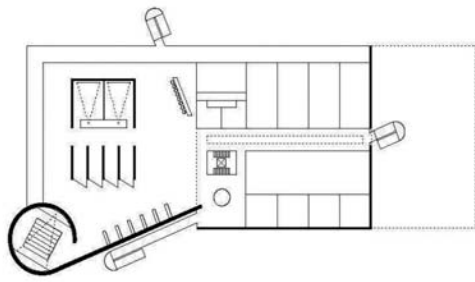
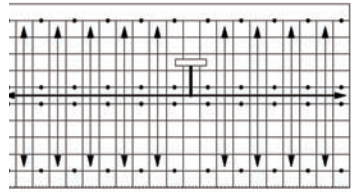
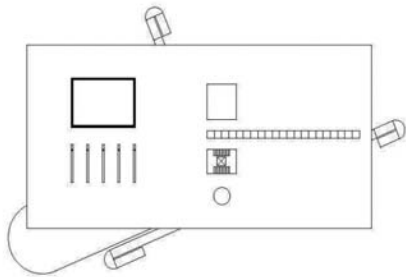
the first five years prove the point - from nothing to a sixteen
strong studio - from no projects to several large completions and
a bookfull of ongoing work. this celebratory publication gives
a glimpse of the result - mainstream modern architecture built
and in use - projects under design and construction -
some dreams and now, many realities...

'nowadays architects are re-discovering the richness of simplicity...'

hans ibelings - 'supermodernism'

ashfield healthcare
ashby de la zouch

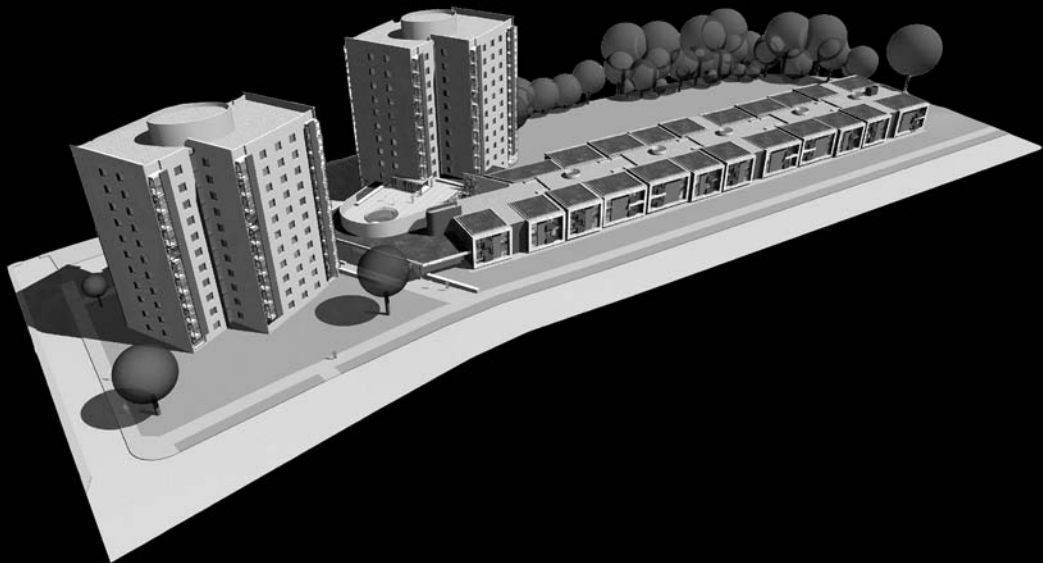


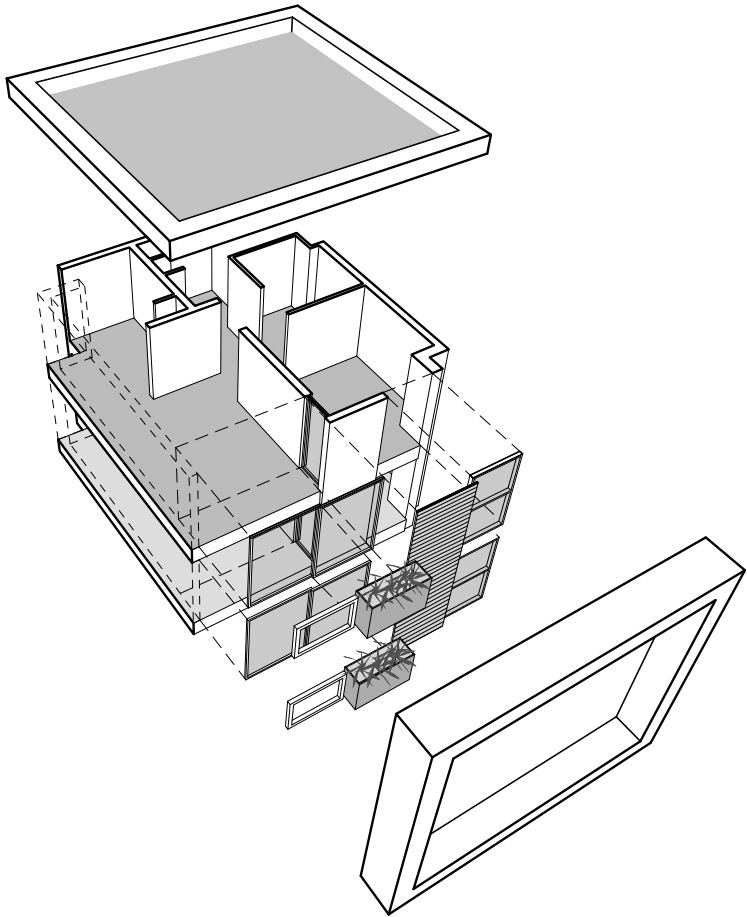


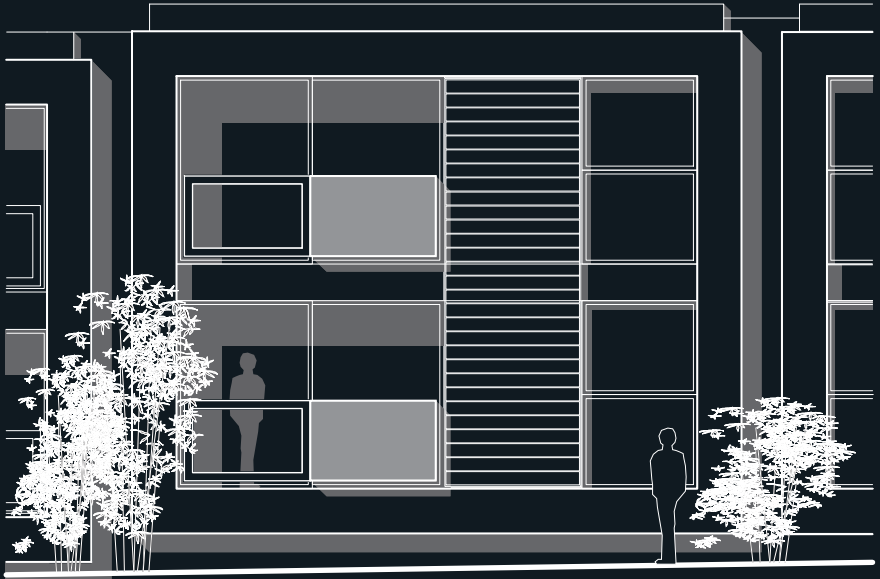


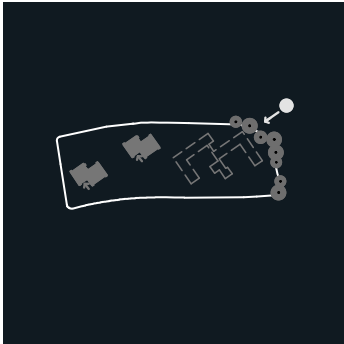
sheltered housing

knotty ash. liverpool

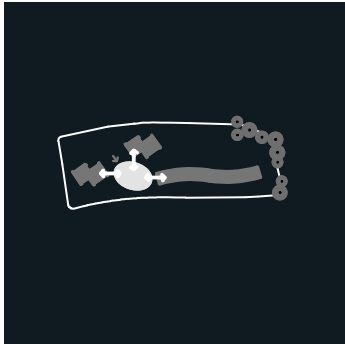








existing



the hub



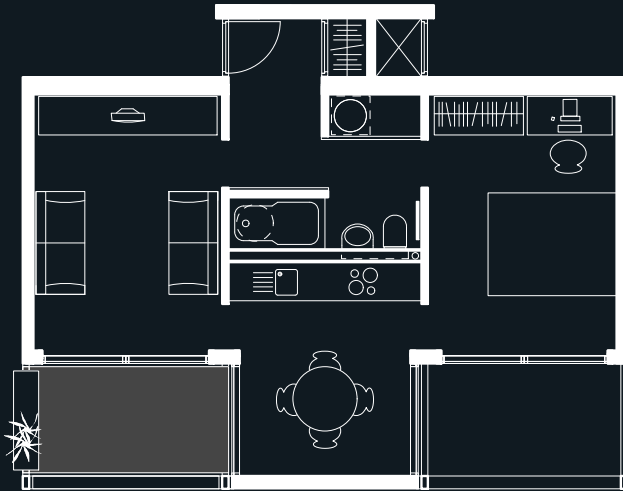
landscape

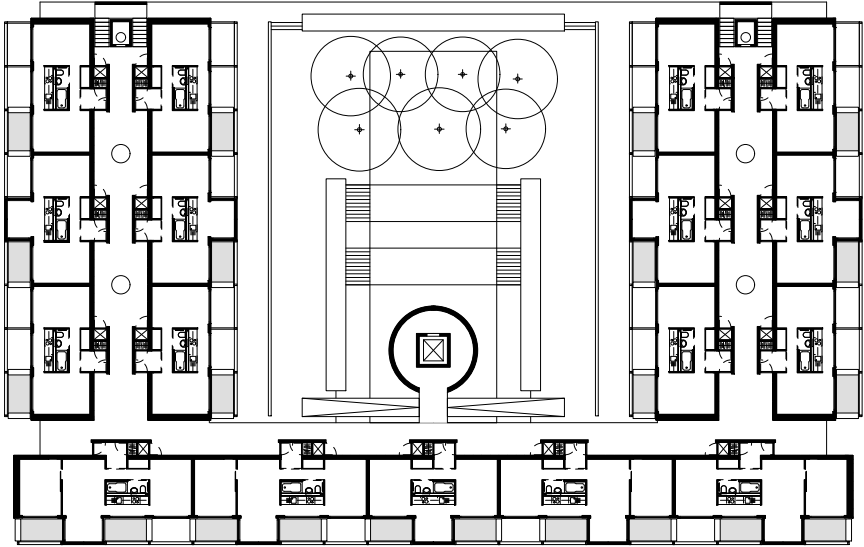




modular apartments
britannia basin. manchester

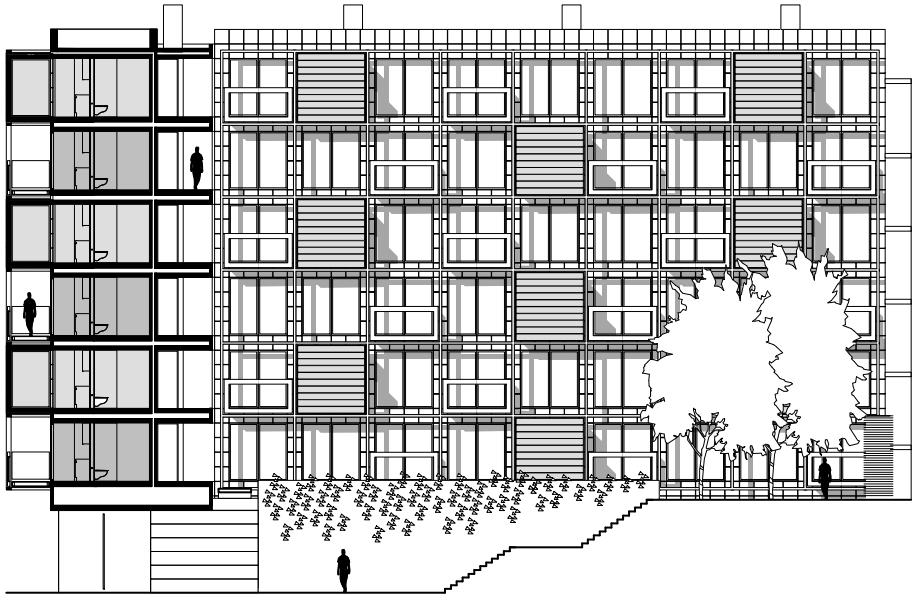






'primary forms are beautiful for
he who wants to invent has to be capable of reason...'

from an essay by aldo rossi - 1966



the collegiate
shaw street. liverpool



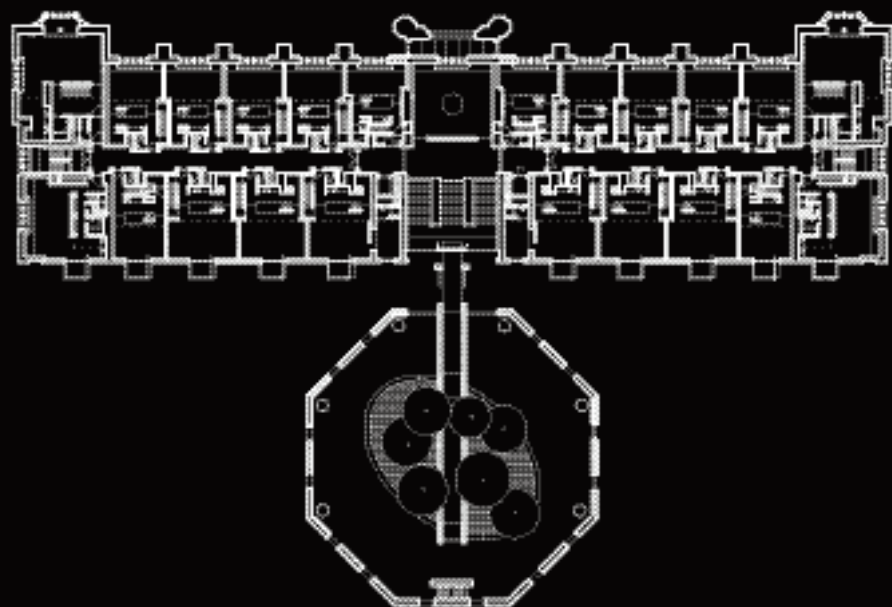




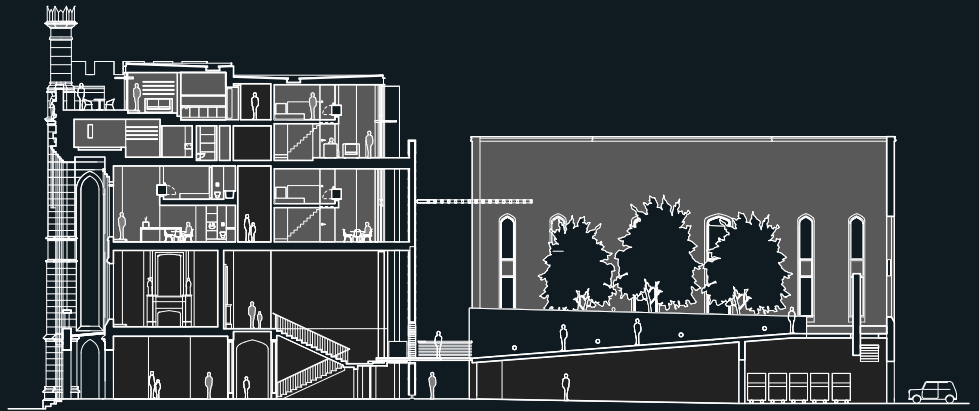
'urban splash and shedkm have played a vital role in kick-starting development in liverpool, bucking economic trends and demonstrating what can be achieved'

alison forrest - prospect journal









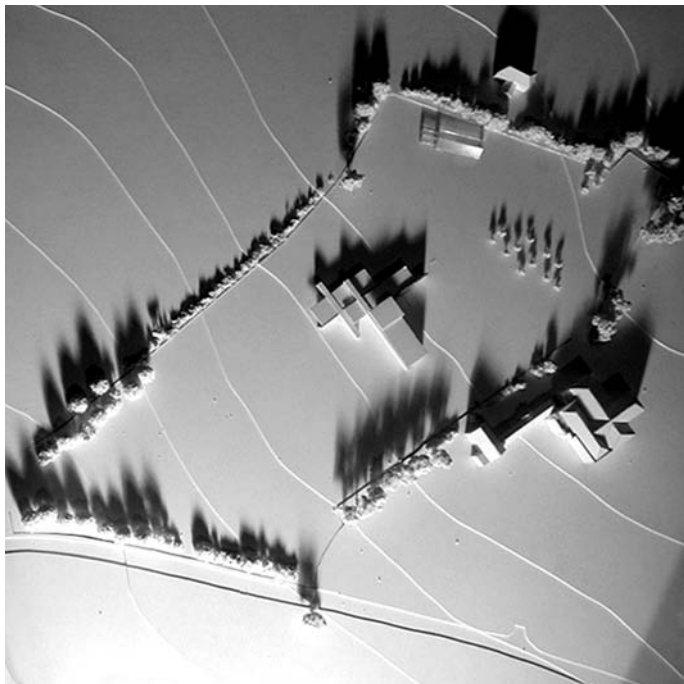
hidden garden

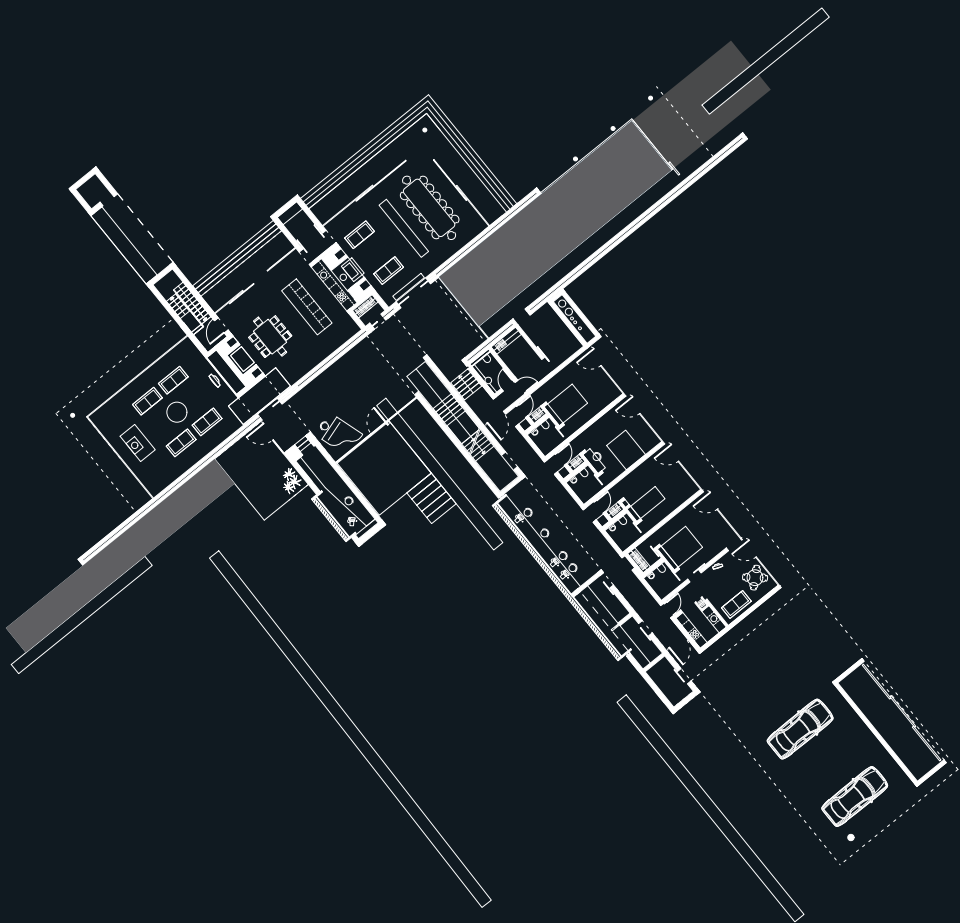






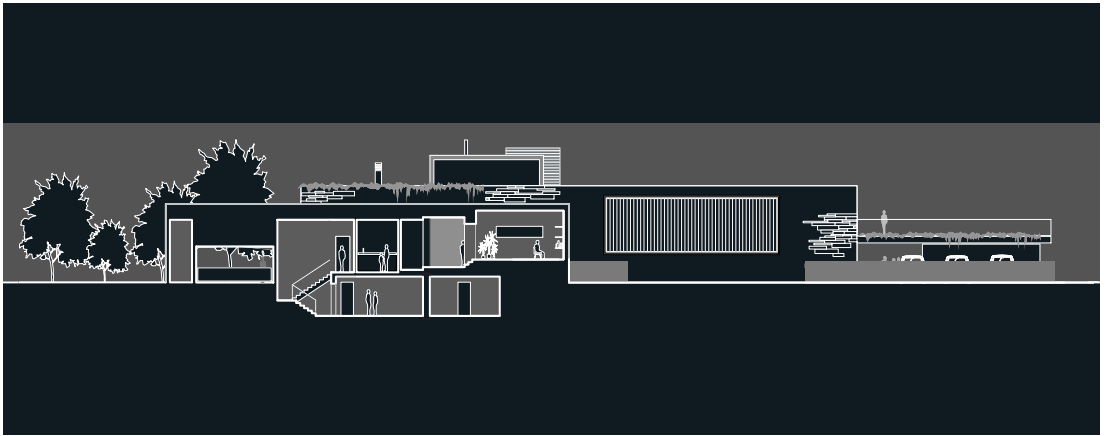
country residence
etwall. south derbyshire

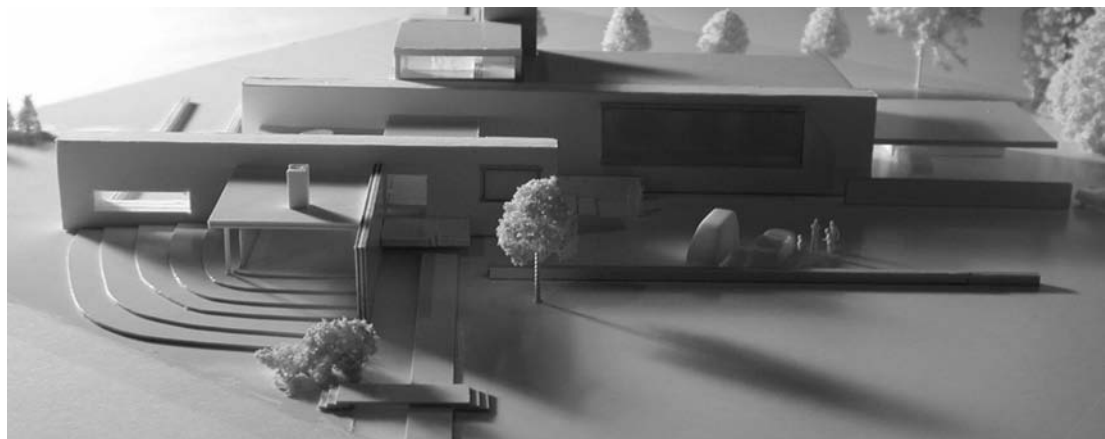




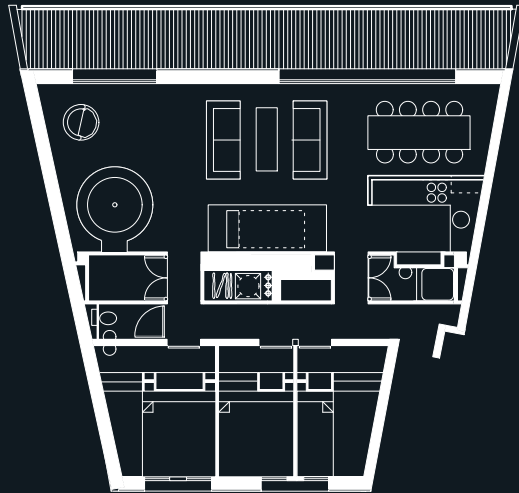
'a desire for well being must be fundamental to all architecture
if we are to achieve harmony between the spaces we create and
the activities to be undertaken in them...'

jørn utzon - 1948





ski apartment
flaine. france

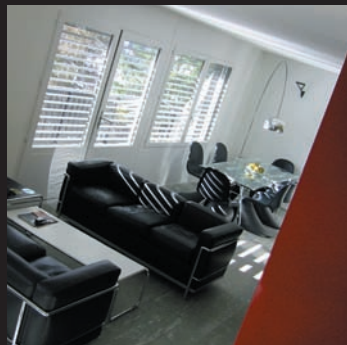


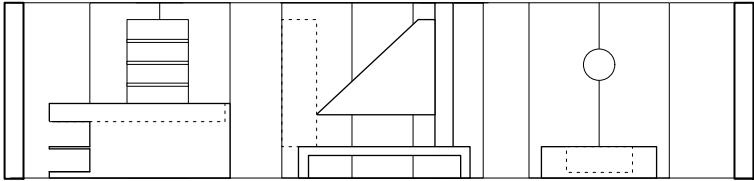
'the valley of flaine in its virgin state was truly remarkable.
bright sun and cool breezes were characteristic throughout the
entire summer... the air was so clear that distances shrank'

robert f gatje - 'marcel breuer - a memoir'



GRANDS VANS





internal elevation

the fort re-generation
fort dunlop. birmingham





existing

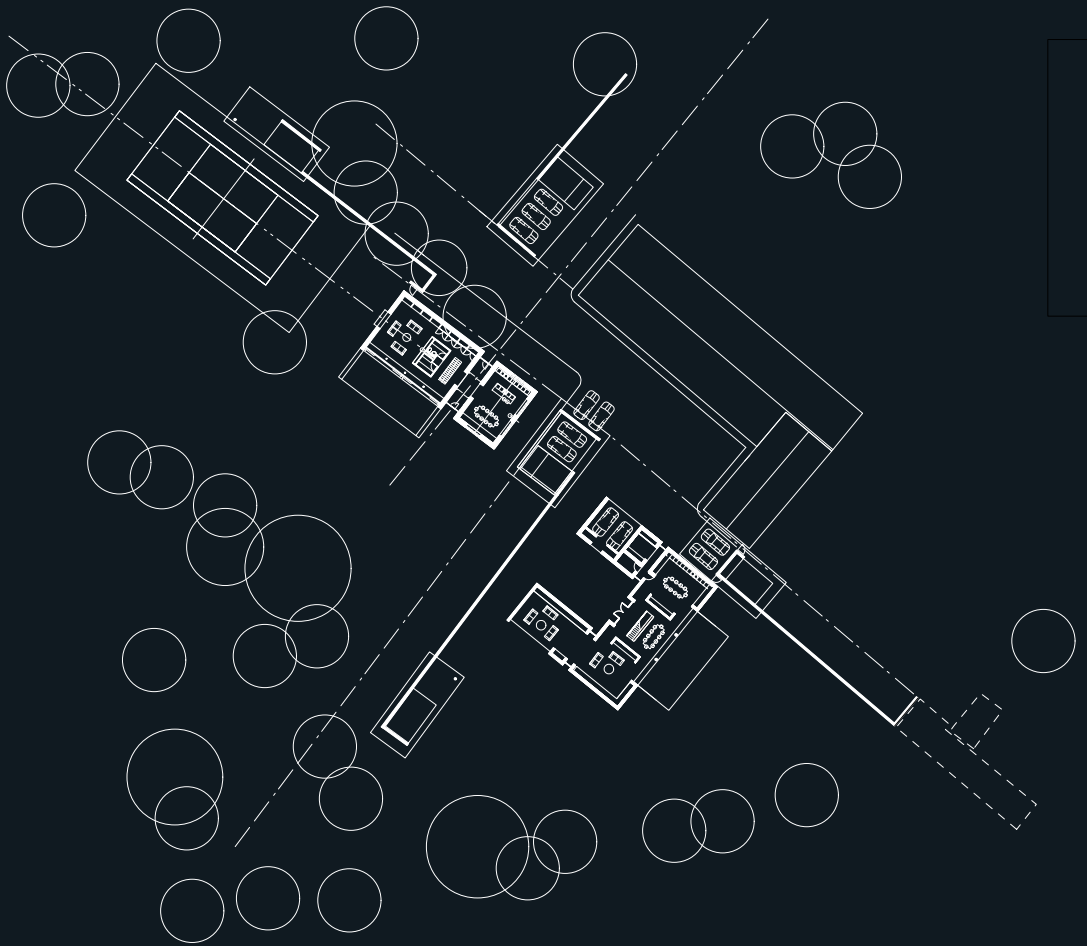


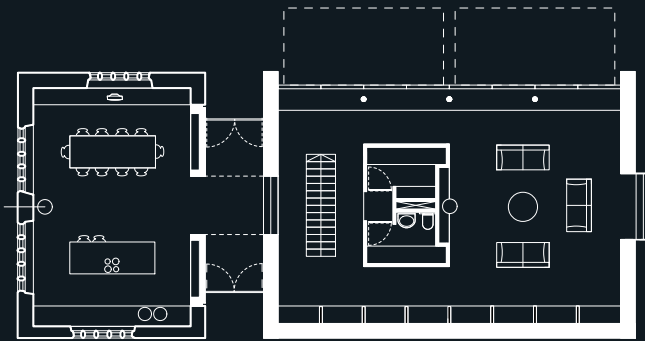
proposed

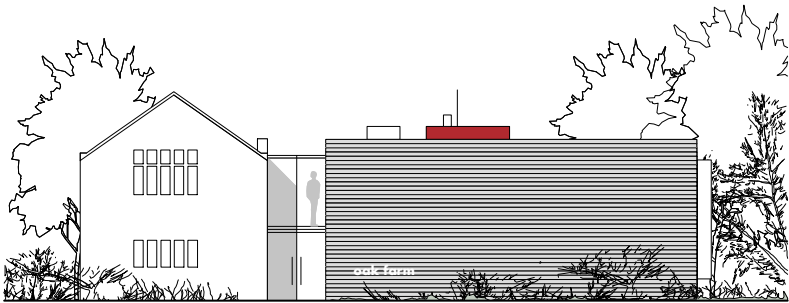




oak farm houses
allerton. liverpool

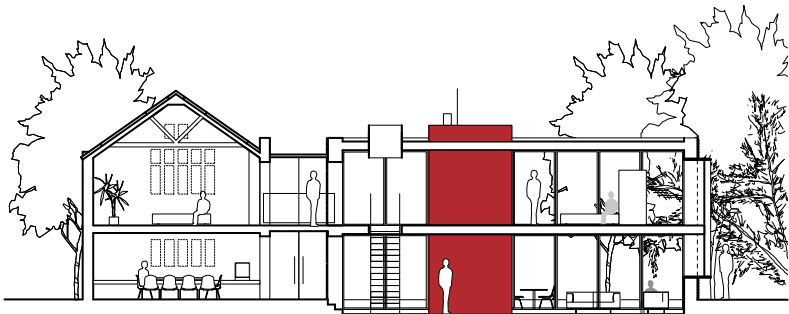






existing
g

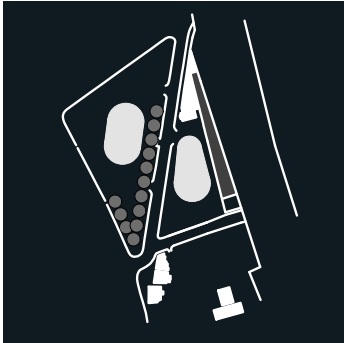
new



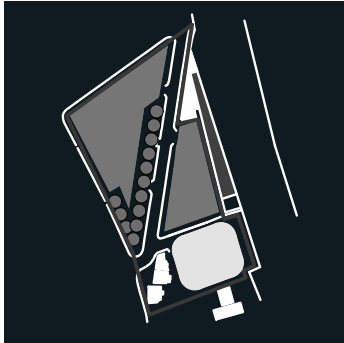
housing competition

green lane. birkenhead

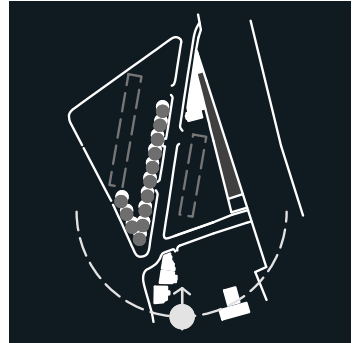




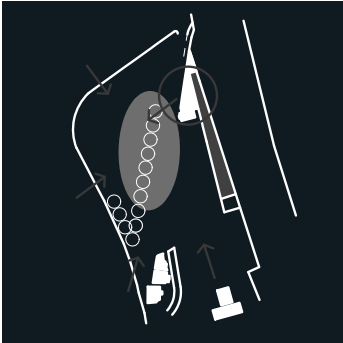
existing setting



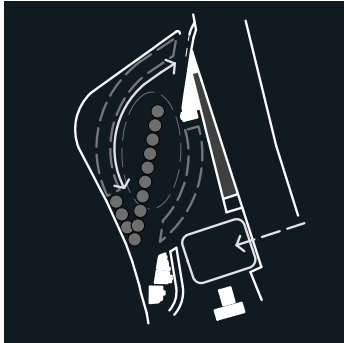
strategy



orientation



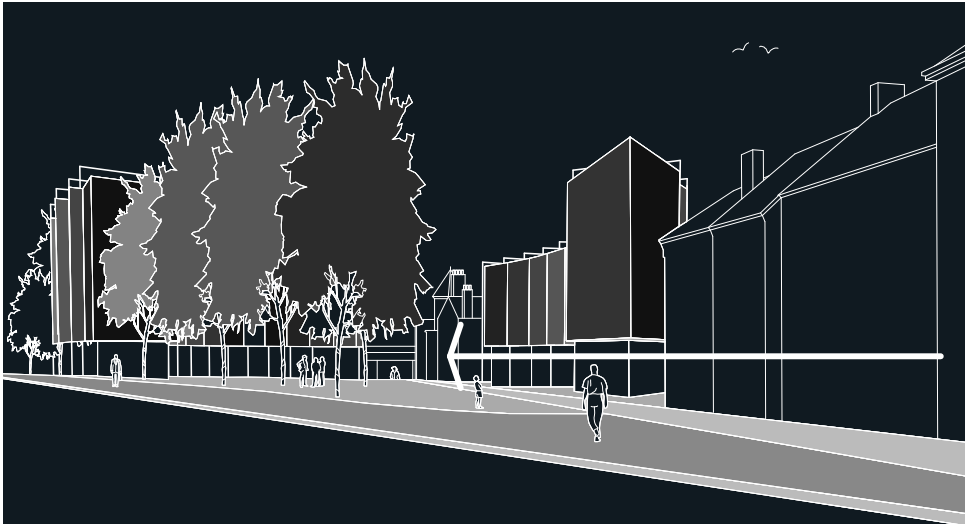
public focus



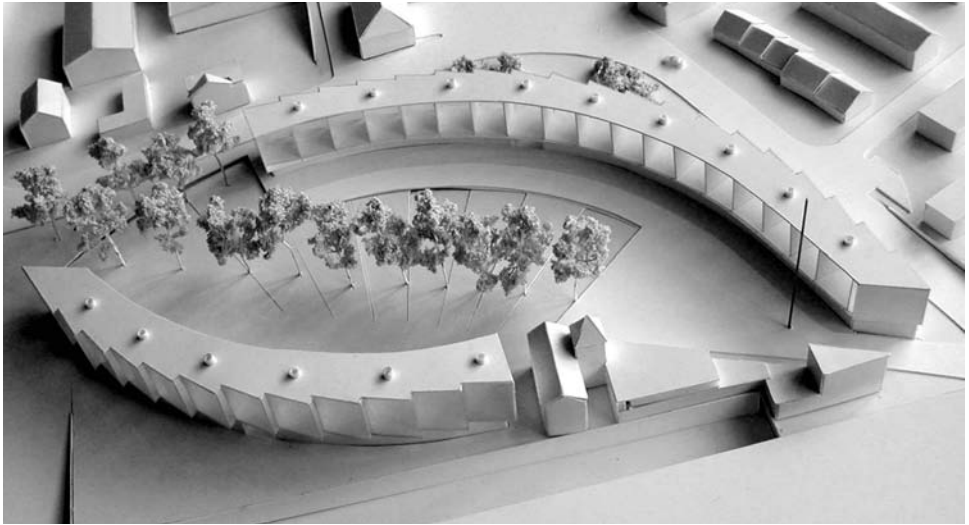
parking



future gateway



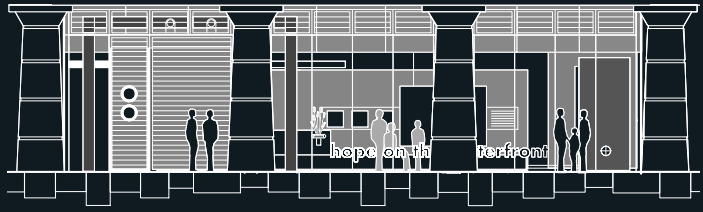
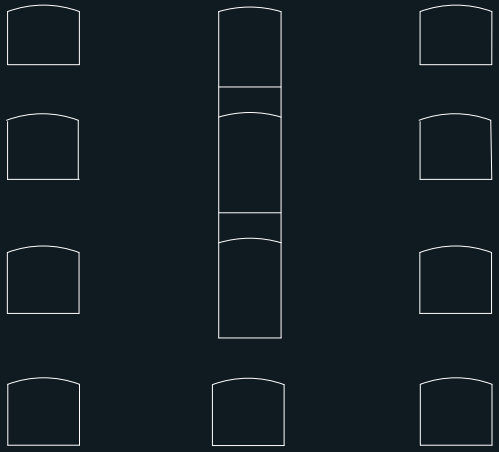
perspective

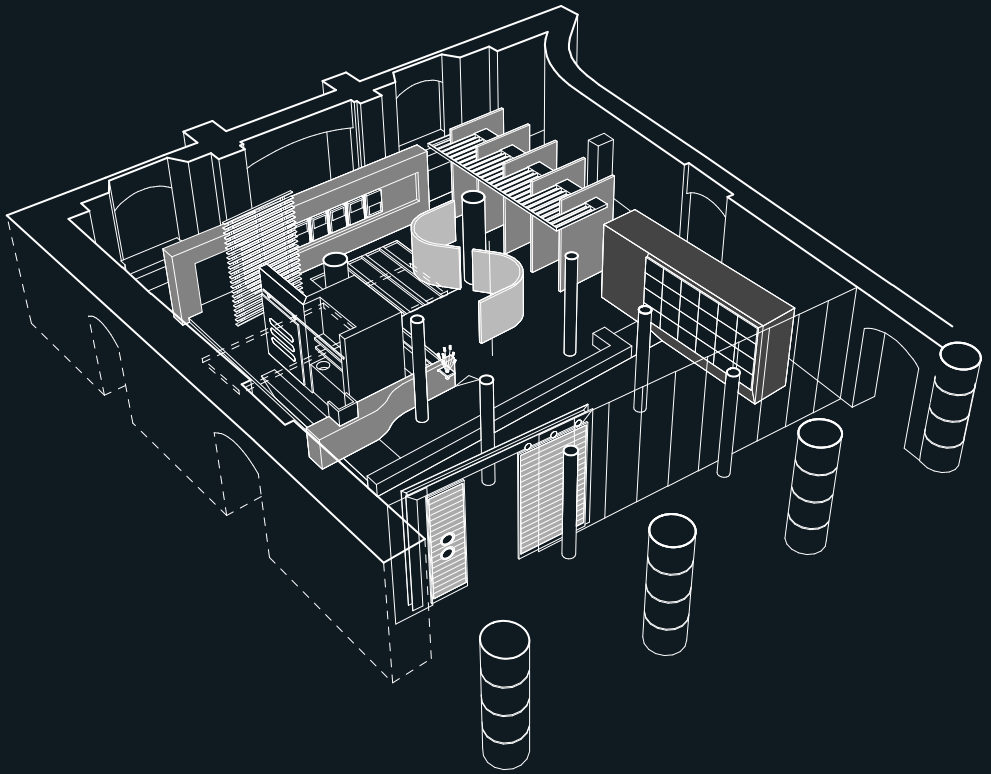


hope on the waterfront
albert dock. liverpool



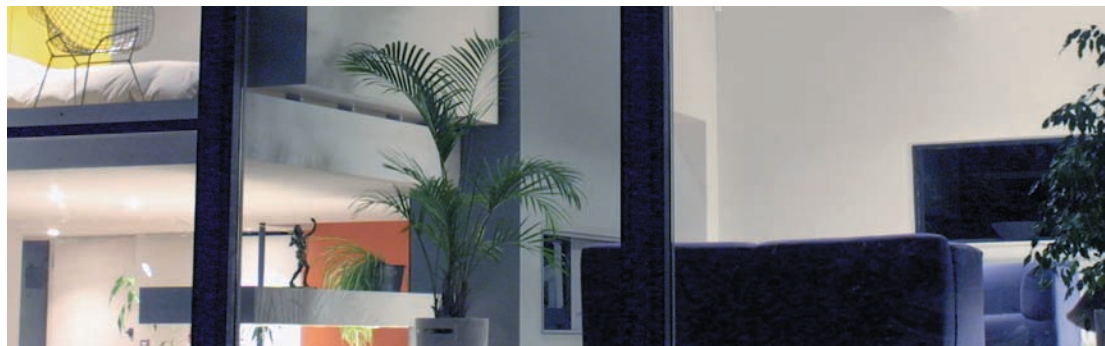




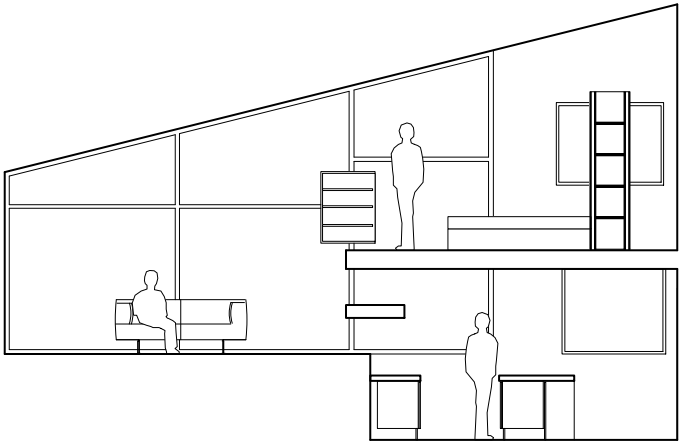


house at bidston hill

wirral

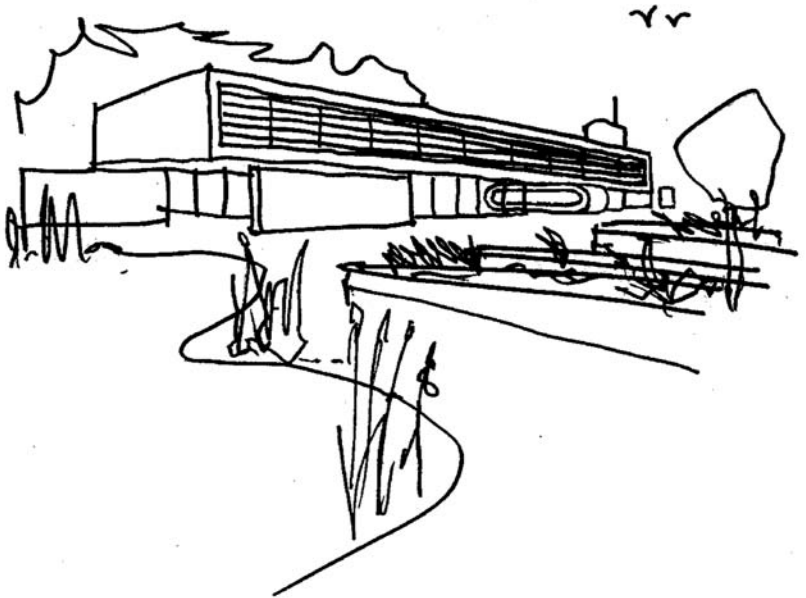


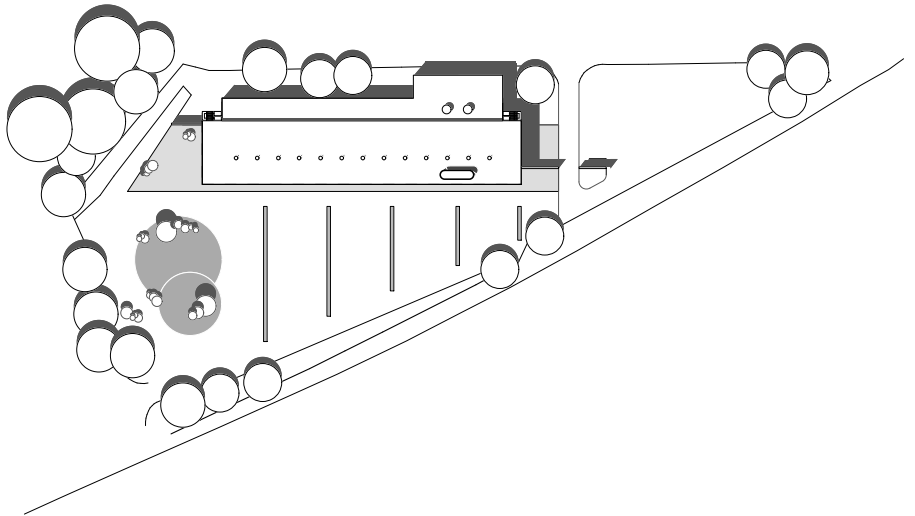


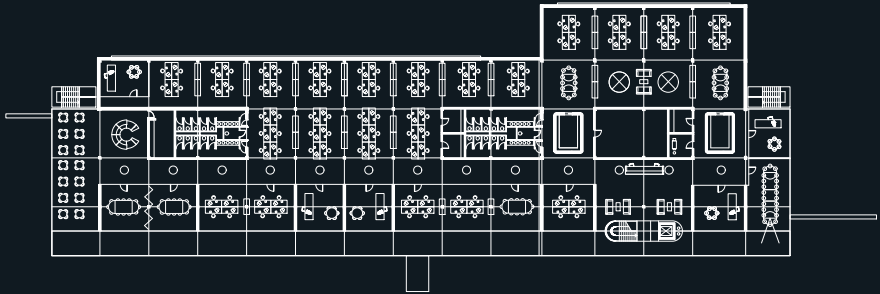
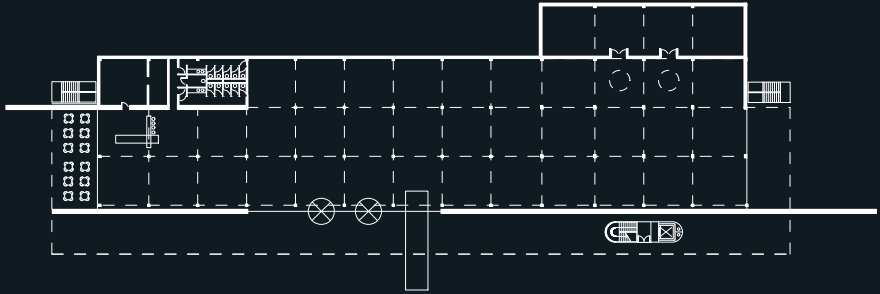


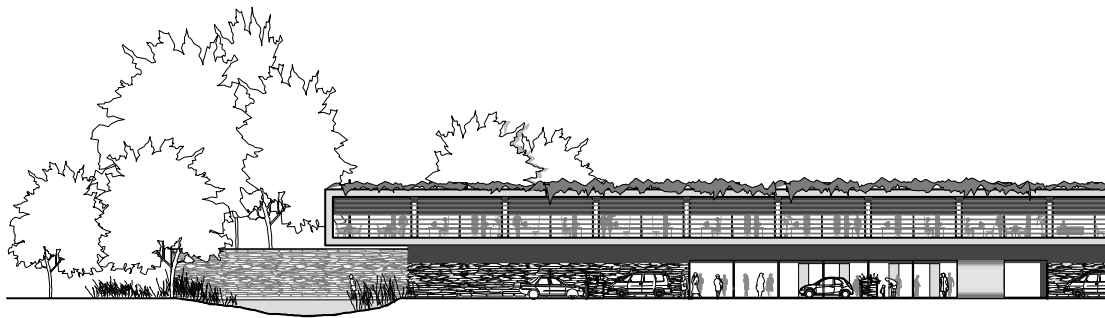
lakeland ltd

windermere. the lake district

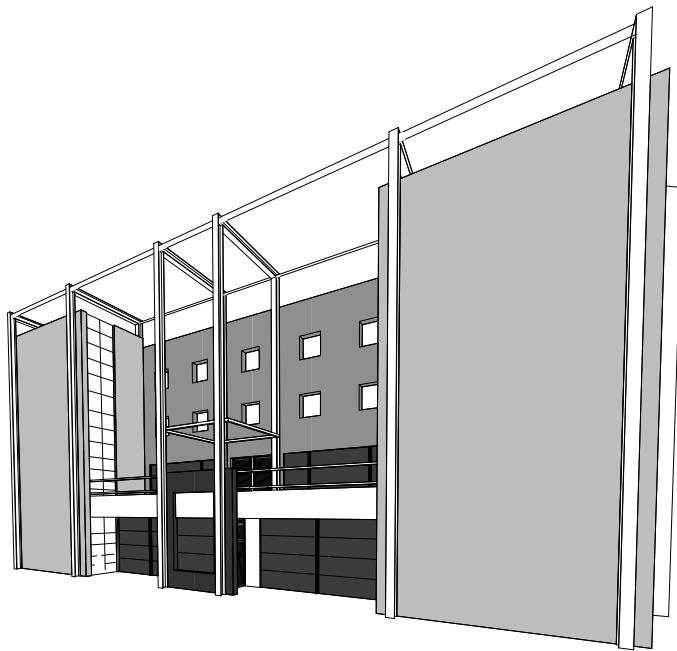








walkabout inn
concert square. liverpool

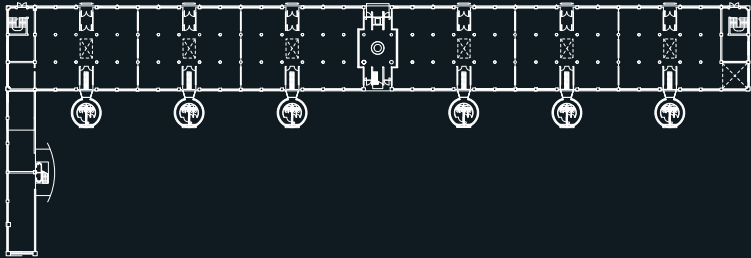






the matchworks
speke garston. liverpool





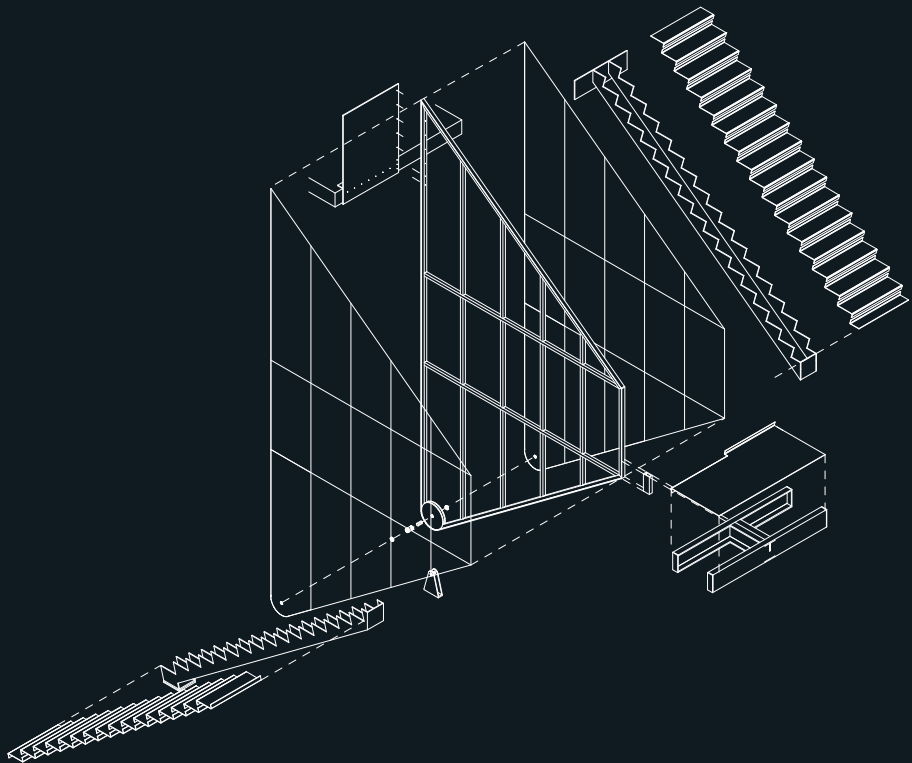


'the clear geometry of the interventions gives them a self-sufficient quality, reminiscent of the hard minimalism of the 1960's artists like judd, morris and andre...'

riba competitions panel



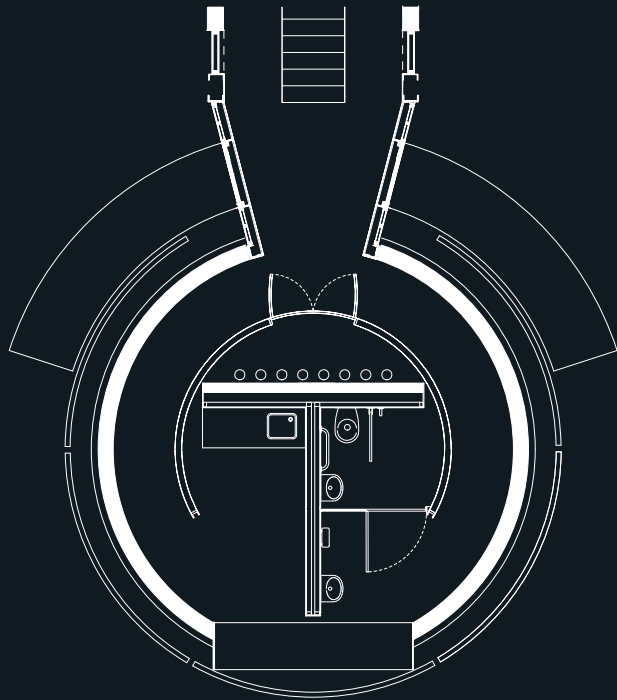
the matchworks





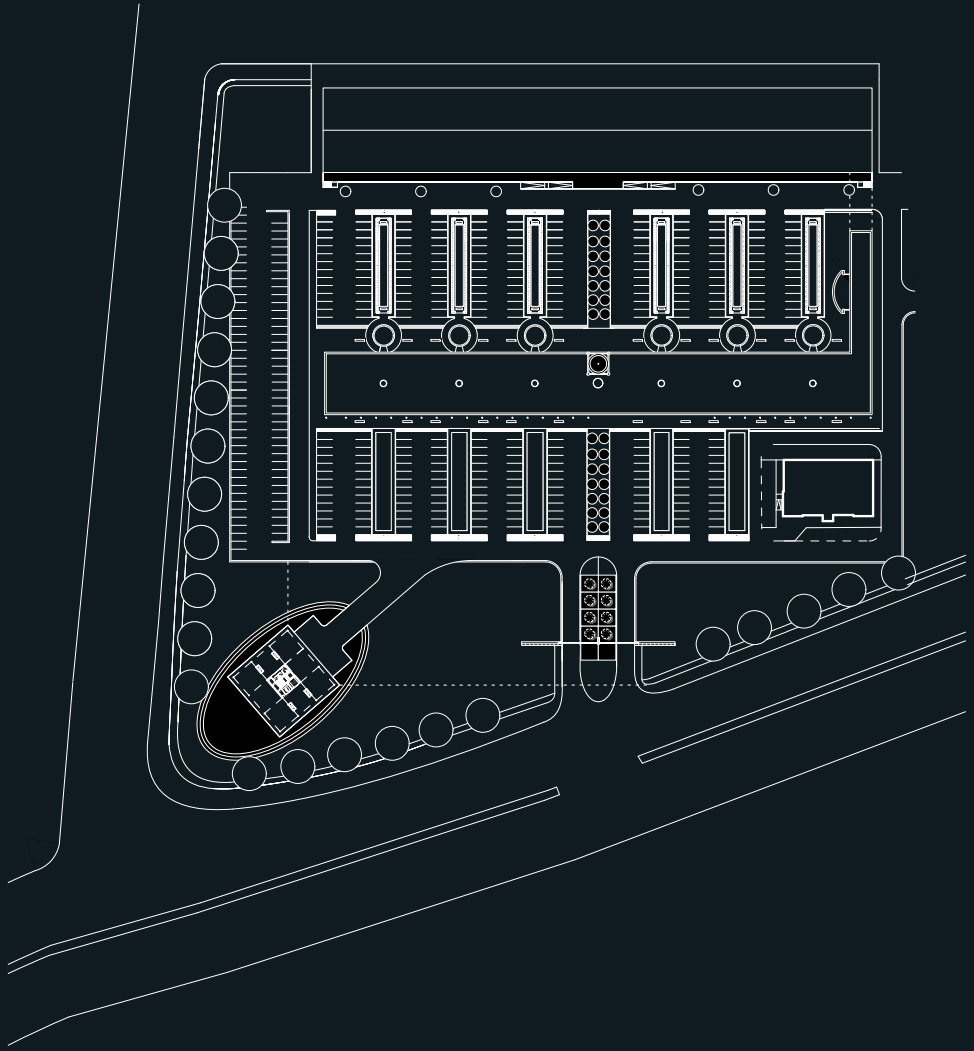


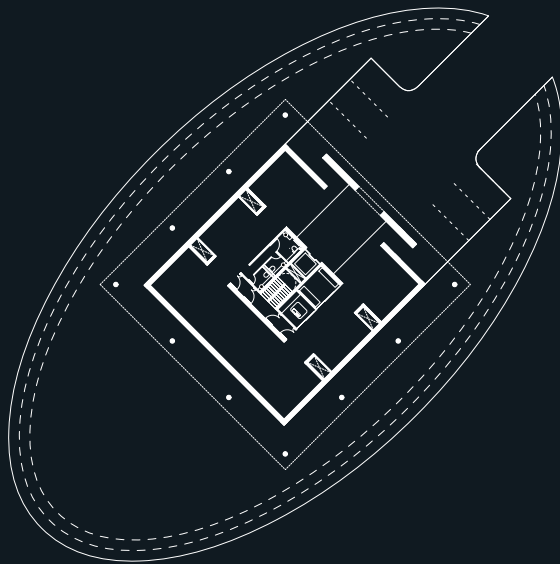


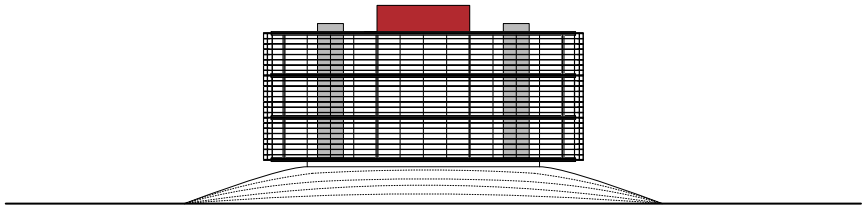
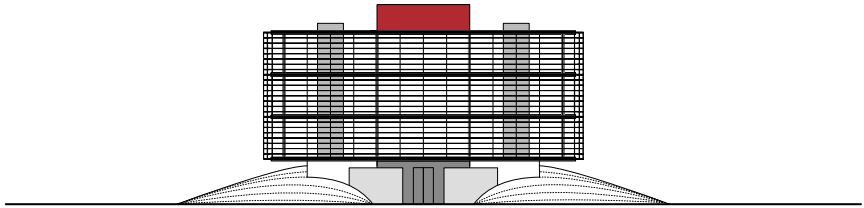




matchbox
speke garston

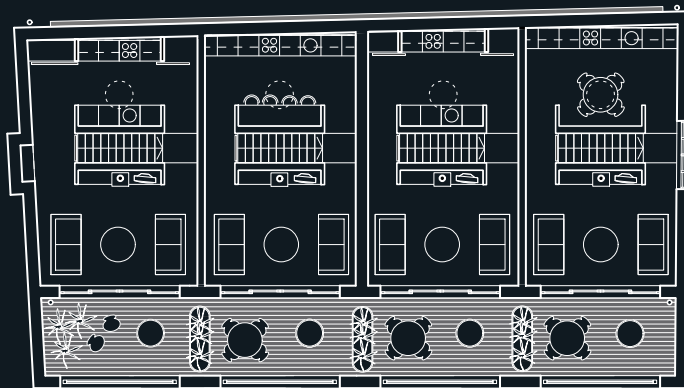


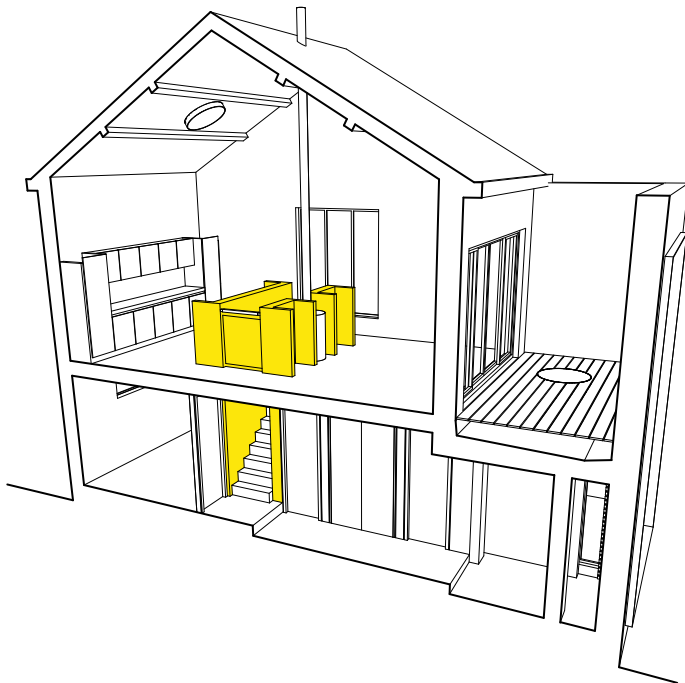




old dye works
oxton. birkenhead





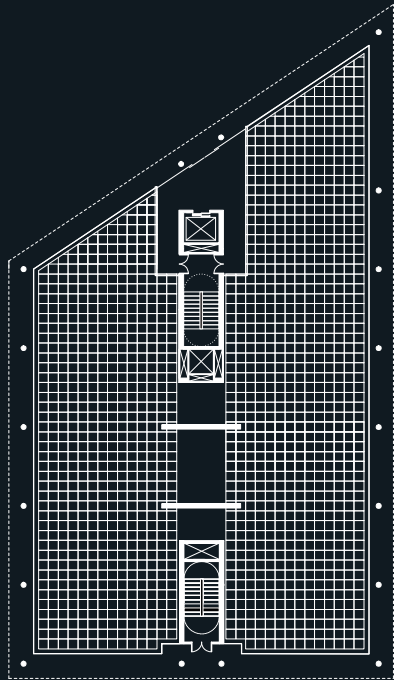


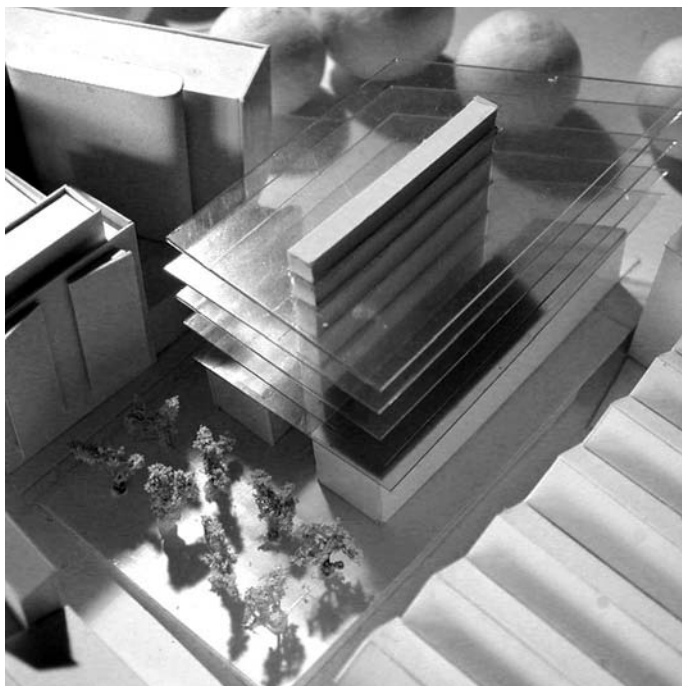
old haymarket
manchester street. liverpool



hotel

new offices

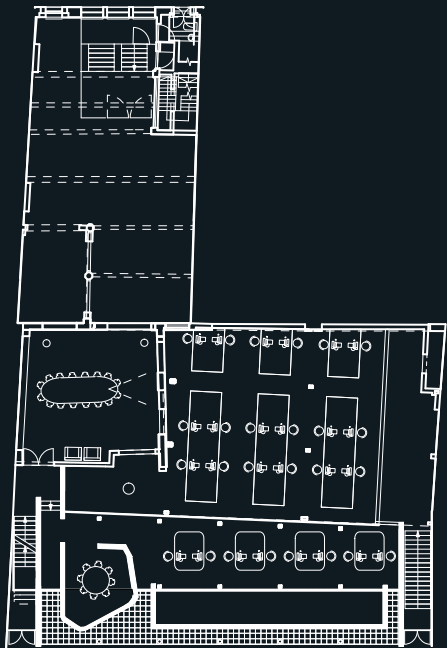




the palace development
wood street, liverpool





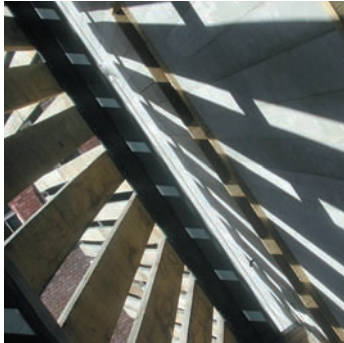
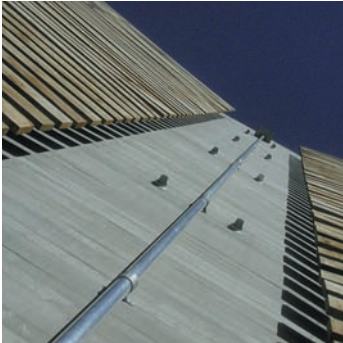


warehouse conversion
preston point apartments. liverpool

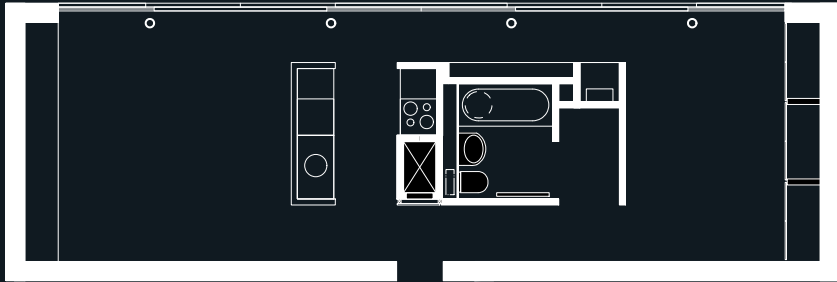


'...stand up for integrity in your building and you stand for integrity
not only in the life of those who did the building, but socially a
reciprocal relationship is inevitable...'

le corbusier - ' towards a new architecture'

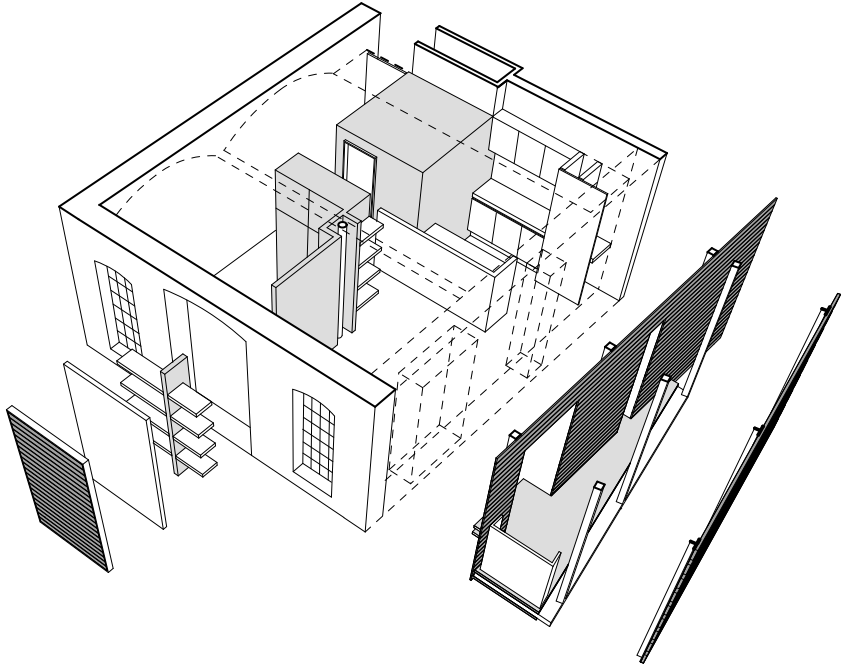


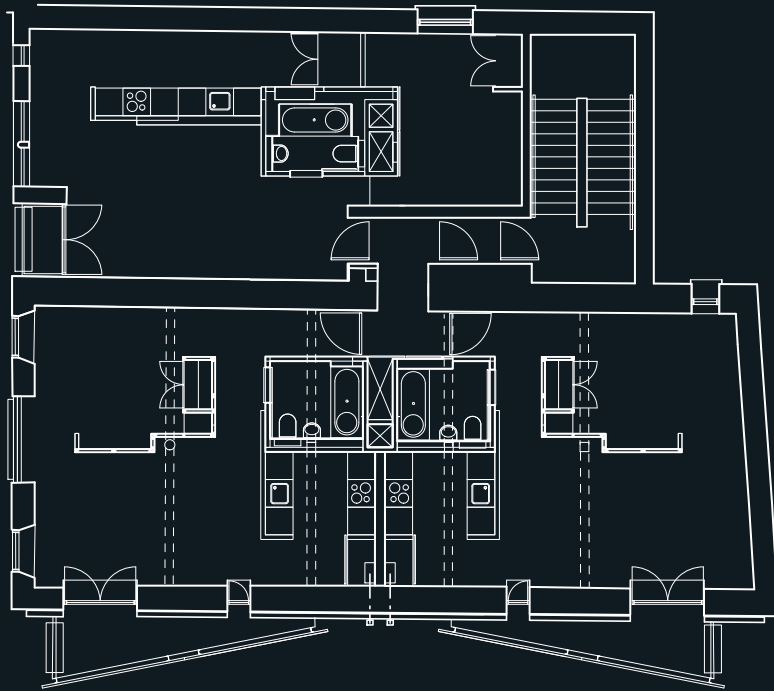




penthouse



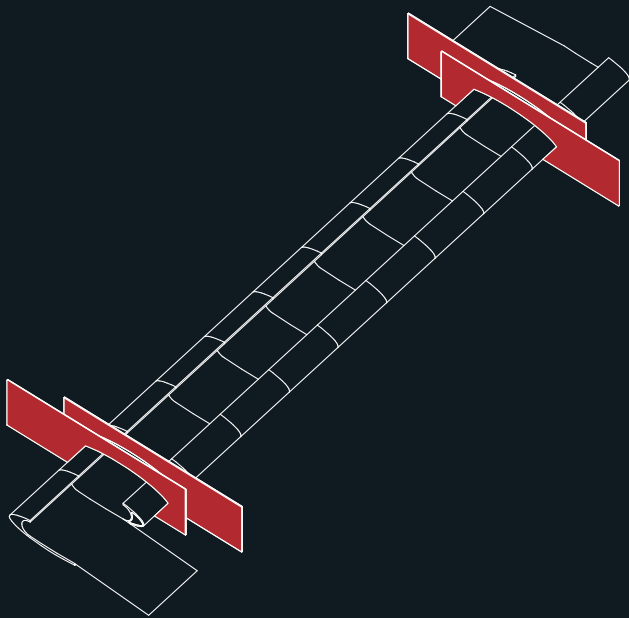


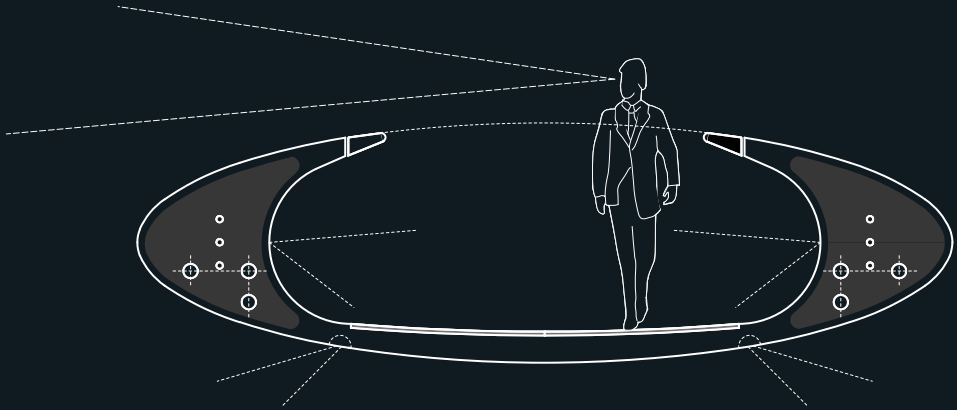




bridge competition

princes dock, liverpool





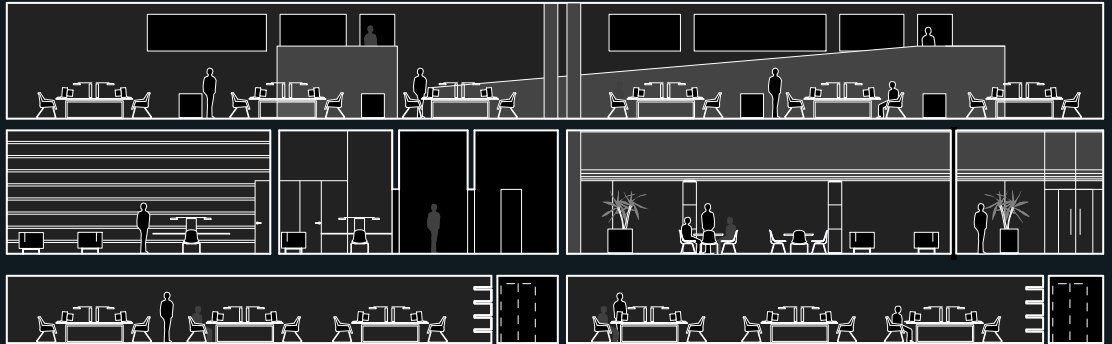
'a clear sky throws up a translucent clearness and after many grim days liverpool assumes a new brilliance. all the colours take on a vibrant freshness and reds stand out with scintillating clarity'

quentin hughes - 'seaport'

psion headquarters
regents park crescent. london

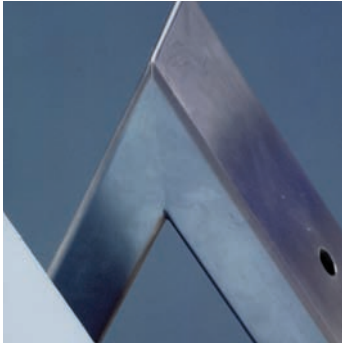






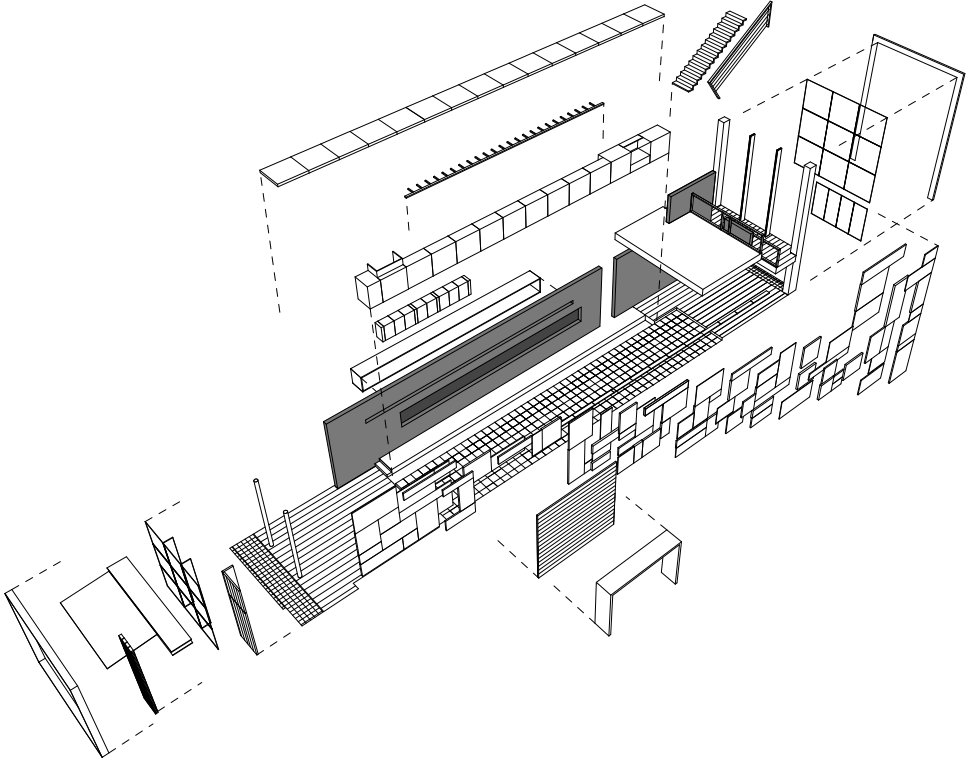
ricci bar-café
bold street. liverpool



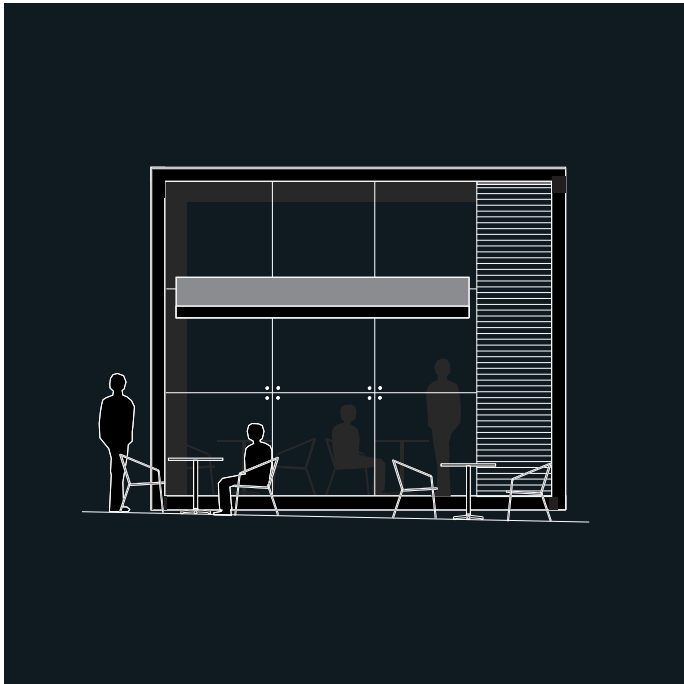


'...the architect must have an ability to imagine and to create,
an ability that is sometimes called fantasy, sometimes dreams'

jørn utzon - 1948







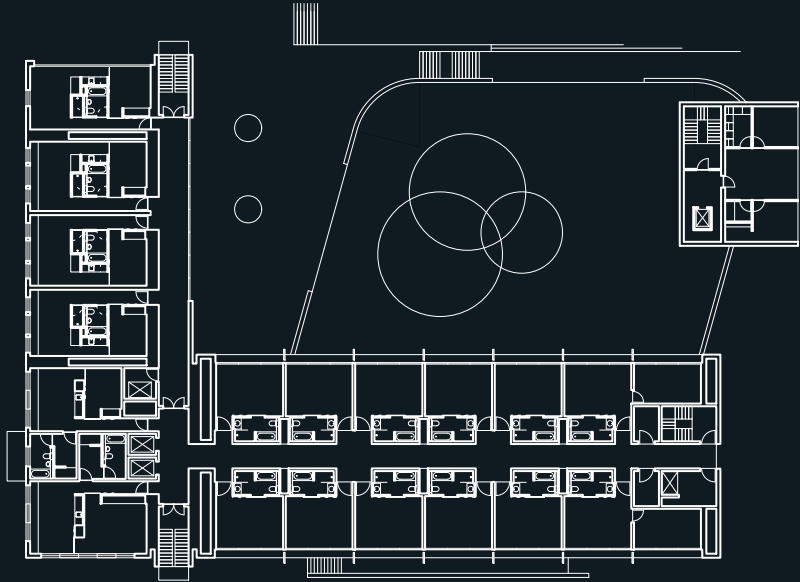


sub-urban housing
thingwall. wirral

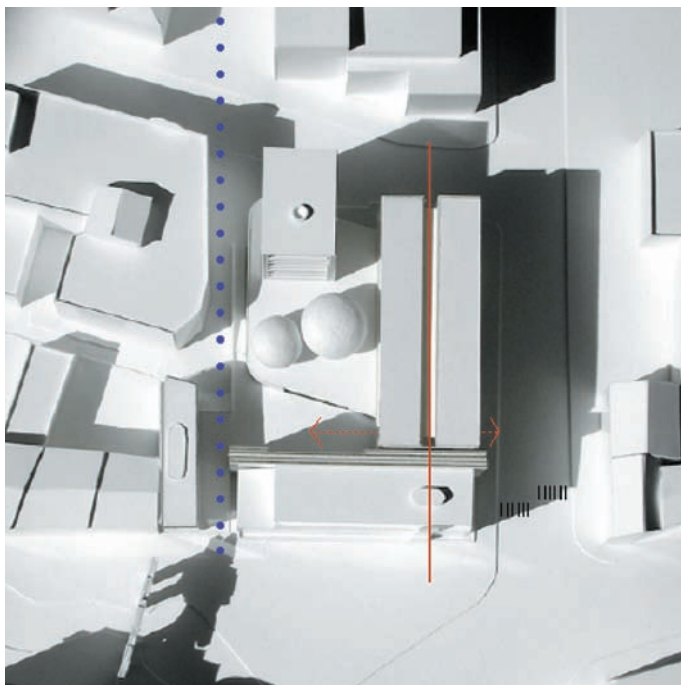


scandinavian hotel

duke street. liverpool







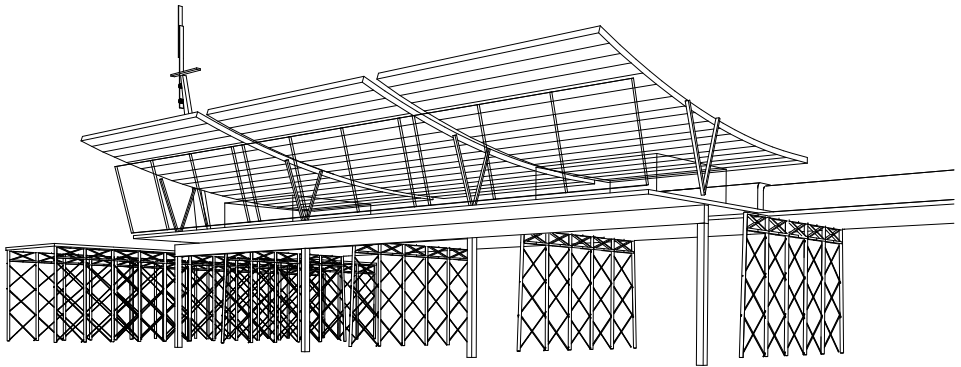
pier pavilion
southport. merseyside











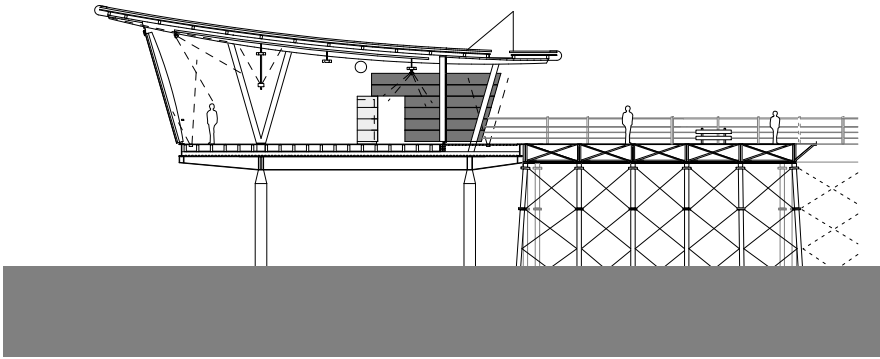
'the architecture of shedkm seems to reflect a native modernist palette of fresh white walls, crisp blues, bright yellow, steel grey, and the transparency of glass...'

dr rob macdonald - liverpool john moores university







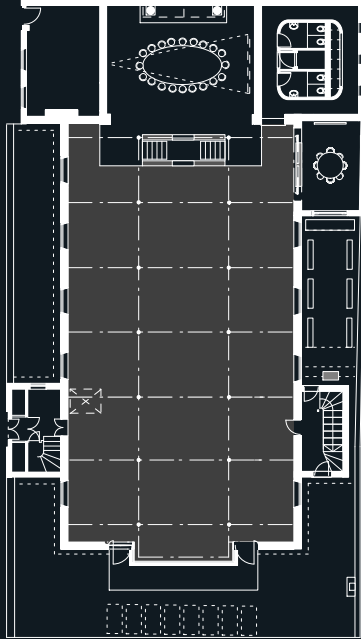


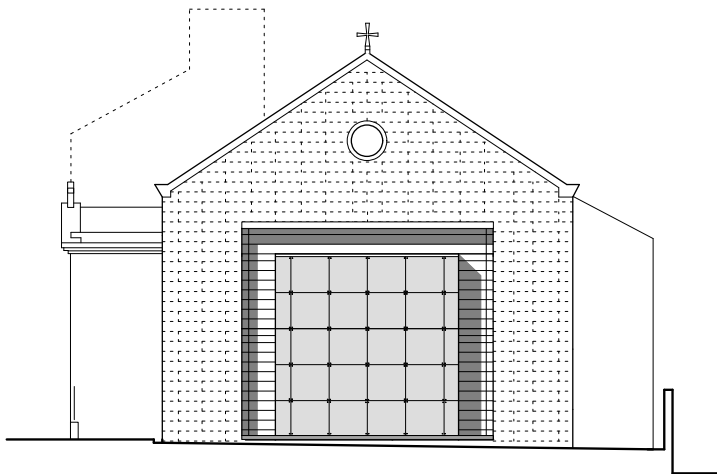


st peters church

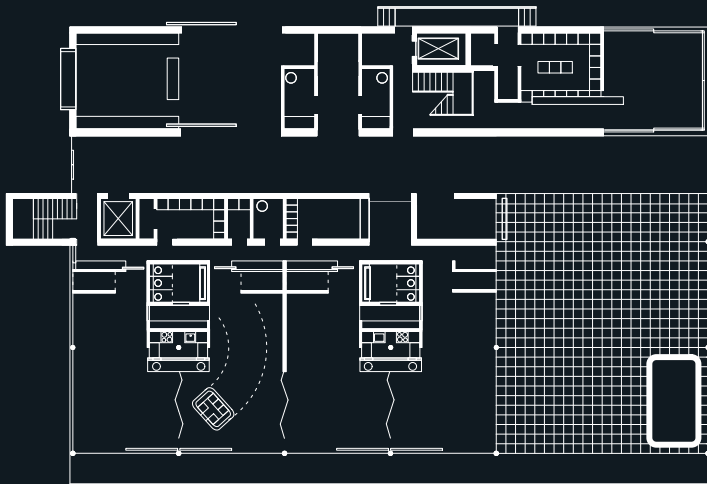
fleet street. liverpool



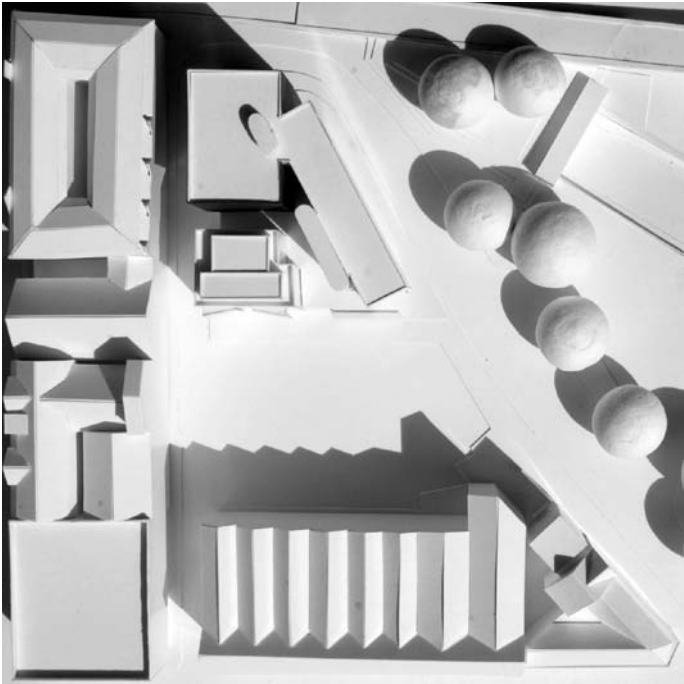




sure start granby
princes avenue. liverpool

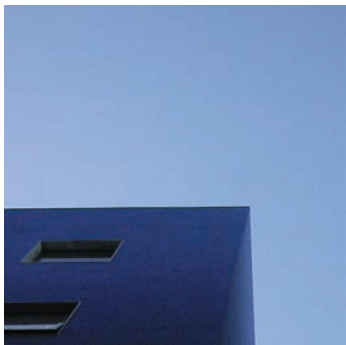


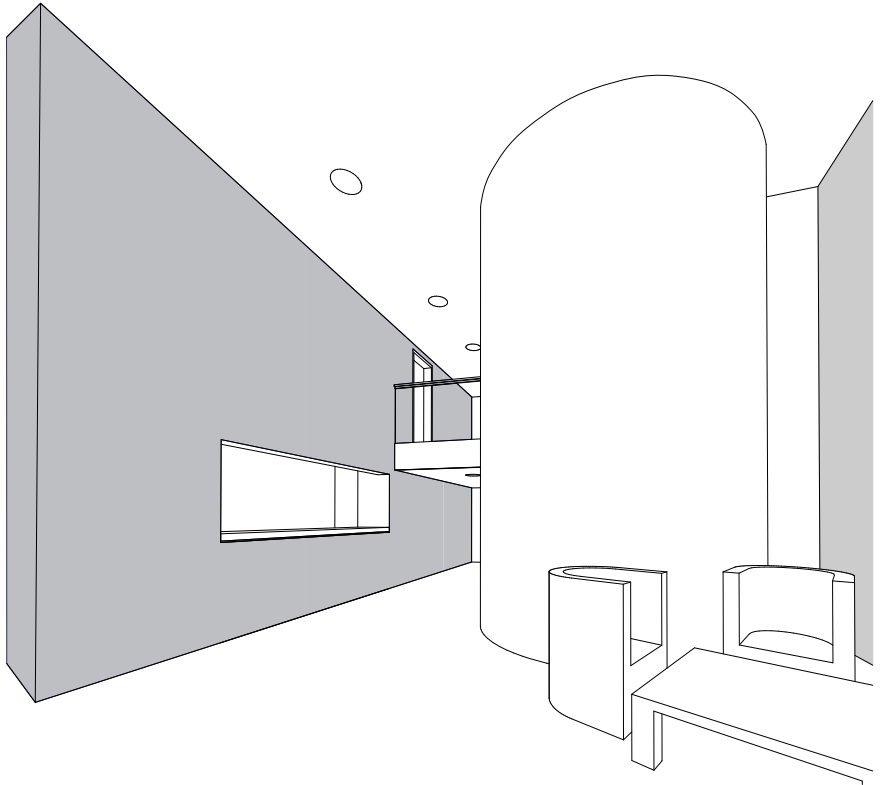
travelodge hotel
manchester street. liverpool

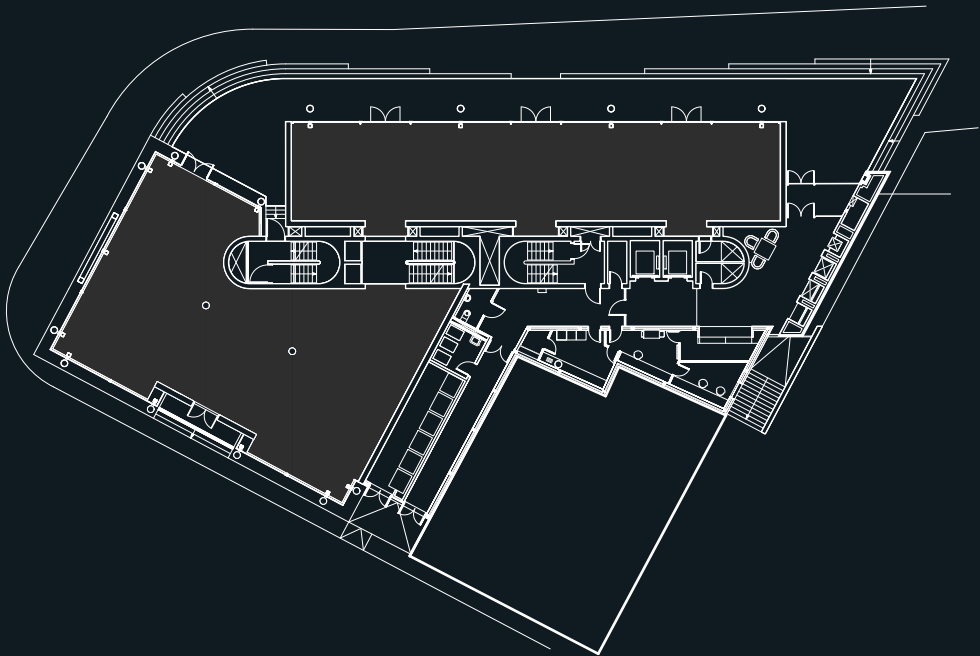


the palace hotel, then, was always screaming and howling
in a way that made the dazzling winter landscape
seem only a grey swampish hush...'

from 'the blue hotel' - stephen crane











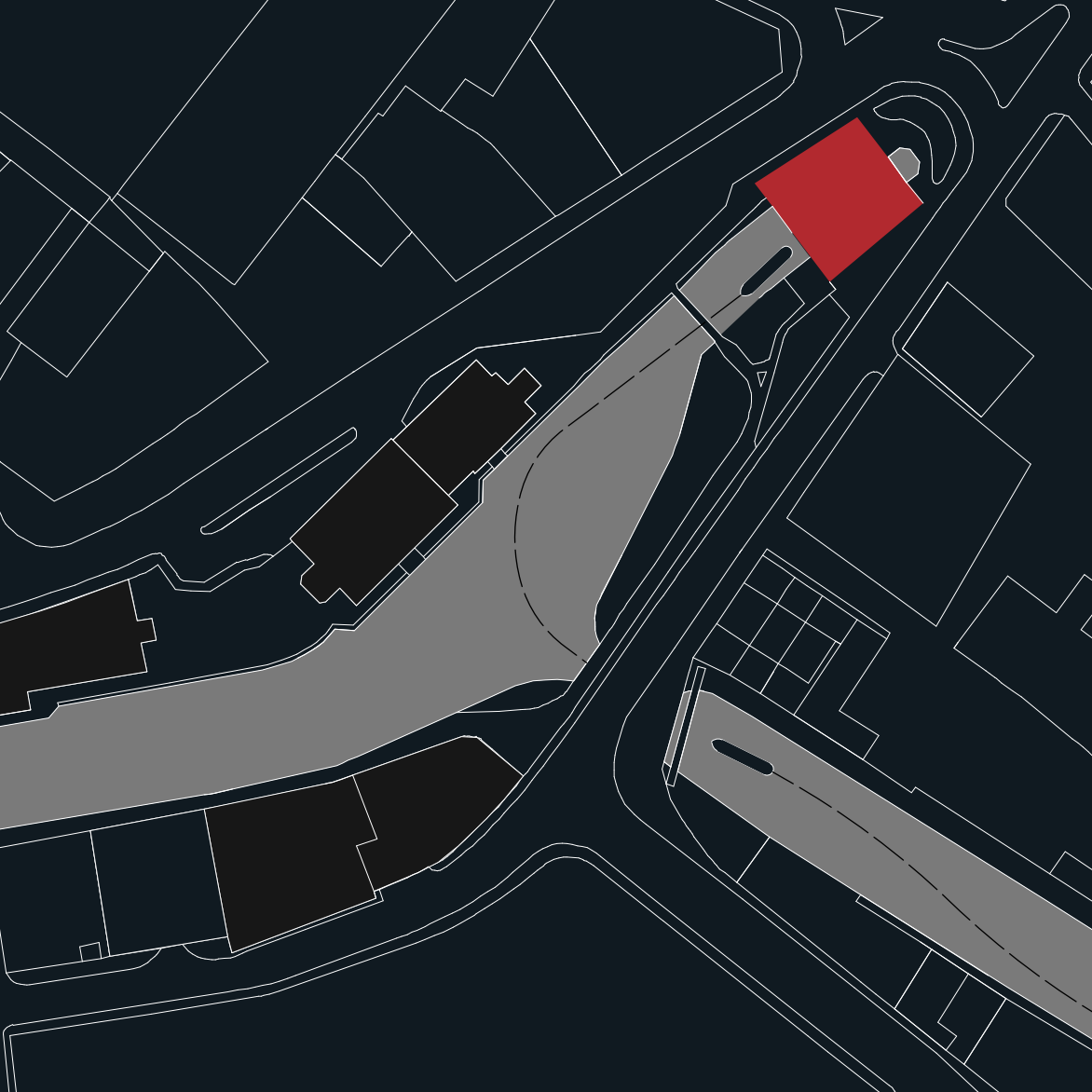


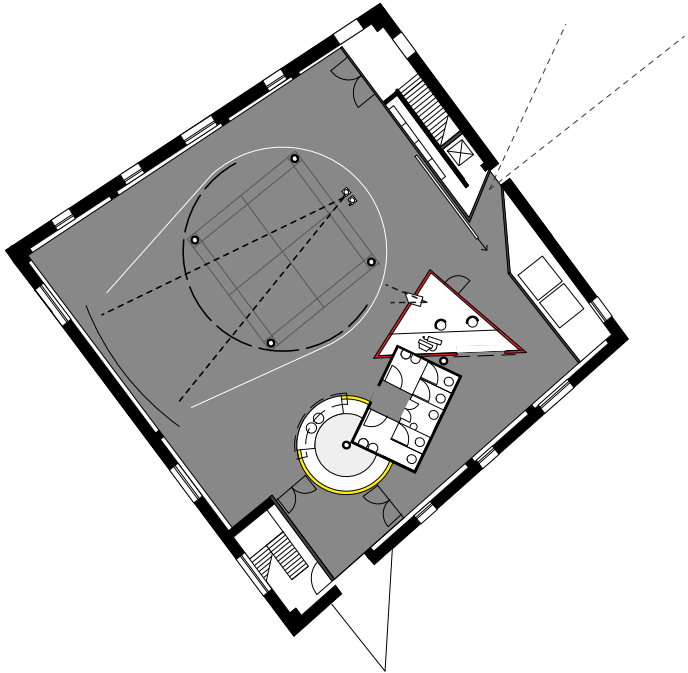
hope on the road

no 1 wigan pier



existing





'primary forms are beautiful
forms because they can be easily appreciated'

le corbusier - ' towards a new architecture '

'of all possible modes of representation, the plan - rather than
the model - occupies a privileged place in the 20th century'

david dunster - 'key buildings of the 20th century'

projects 1997- 2002

**ashfield healthcare
sheltered housing
modular apartments
the collegiate
country residence
ski apartment
the fort re-generation
oak farm houses
housing competition
hope on the waterfront
house at bidston hill
lakeland ltd
walkabout inn
the matchworks
matchbox
old dye works
old haymarket
the palace development
warehouse conversion
bridge competition
psion headquarters
ricci bar-café
sub-urban housing
scandinavian hotel
pier pavilion
st peters church
surestart granby
travelodge hotel
hope on the road**

- ¥ hq for a contract services company – 2002
- apartments/community centre for housing 21 – 2005
- projected scheme for system built complex for urban splash
- 96 apartments in gothic school for urban splash – 2001
- planning permission for modern country house in the green belt
- in marcel breuer's flaine for tom bloxham and family – 2001
- conversion of dunlop tyre warehouse for urban box – 2005
- projected scheme for residences in liverpool
- entry for housing association competition in birkenhead – 2001
- interpretation centre and cafe at the albert dock – 1997
- domestic conversion in bidston, wirral – 2002
- scheme for hq & store in windermere
- extension to a cafe/bar/hotel in liverpool – 2001
- conversion of bryant & may factory for urban splash – 2001
- projected signature building at the matchworks for urban splash
- planning permission for town houses in birkenhead
- projected city centre offices/retail/carparking for urban splash
- projected city centre offices/retail for urban splash
- 15 apartments & penthouses for maritime housing – 2001
- for princes dock liverpool – runner up 1998
- for psion computers in regents park crescent london – 2000
- in bold street liverpool for giancarlo ricci – 1999
- town houses on the edge of the mid-wirral greenbelt
- projected hotel & retail scheme near chinatown
- pavilion on re-furbished southport pier – 2002
- city centre conversion to offices
- planning application for surestart reception centre
- ¥ 104 bed city centre hotel for compass travelodge – 2002
- scheme for reception centre at no 1 wigan pier

awards

the collegiate

RIBA regional
civic trust national
merseyside civic society
housing design project
liverpool architecture &
design trust

the matchworks

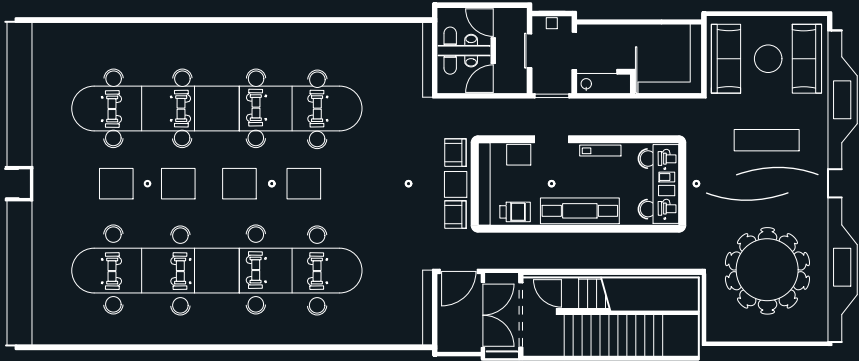
RIBA regional
civic trust national
liverpool architecture &
design trust

preston point

civic trust national
housing design project
housing design final

ricci bar-cafe

merseyside civic society
LDI design



shedkm bold street studio

jon falkingham
james weston
dave king
mark sidebotham
ian killick
hazel rounding
randal turner
dominic wilkinson
rod mcallister (london)
neil dawson
kari simpson
lee halligan
mark braund
barbel gamm
warren mcfadden
stuart dickie
beverly sanderson
ali marshall

miles pearson
niek turner
bettina kasper
alan ross
mark perceval
les ashton
mike jones (london)
amanda wanner
david haselgrove
jonathan fisher
ben johns
quentin keohane
bianka schmitt
guido truffer (geneva)
sophie king o'neill
karen matthews
margaret matthews
ian wylie (london)

britannia basin

castle field, manchester

thanks are due to

clients: urban splash. wendy dixon, max stone & frenson. maritime housing association. speke garston development company. the liverpool housing action trust. liverpool hope university college. downing developments. giancarlo ricci. bill maynard. sefton metropolitan borough. ed fazakerley & julie barker with compass travelodge. robertson group construction. granby surestart. psion plc. urban splash projects. tom and jo bloxham. urban box ltd. ashfield healthcare ltd. chris and sam corbin. the works trust. bilton ward developments. rod holmes (grosvenor estates). workspace plc. the mandarin. north liverpool partnership. baa bar ltd. hobs ltd. derek matthews. lakeland ltd. sure maintenance. jarvis. paul murphy. the residents of ashgrange/ashfield house. housing 21. direct purpose. henry prescott of mason owen.

consultants: curtins consulting. roy billington associates. whitby bird. buro happold. arup. alan johnston partnership. simon lovell associates. WSP. postford haskonning. steven hunt associates. mcallister landscape. progressive services design. ICS. simon fenton partnership. tweeds. banks wood & partners. stephen davies & associates. capita. baker hollingworth associates. faithful & gould. c a sothers ltd. splinter. infinite 3D. capture. C3 imaging. ben davies. joule. eric dean. PDW. fulcrum consulting. paul sheen associates. peter gerrard & associates. robert turley associates. english heritage and CABE. ryan-wood. liverpool city, birmingham, south derbyshire, leicestershire and wirral planning, building control and fire officers – thanks also to mcallister co (southport pier). michael jones architects (ashfield healthcare). truffer architectes geneva (flaine), and SJS - ian, george & staff.

also to all of the contractors, subcontractors, suppliers and manufacturers who have made the realisation of shedkm projects possible

photography by

shedkm. jonathan keenan. nick hulton. chris brink.
phil sayer and the housing design awards committee

special thanks to angela hurren and guy woodland
for help with production and publishing

shedkm

61a bold street. liverpool. L1 4EZ
design@shedkm.co.uk www.shedkm.co.uk

tel +44 (0) 151 709 8211