



Liverpool One Shopping Mall Staircase

PORTFOLIO
XINYUE CONG
2016-2017

Circulation plays an important effect in architectural design. Generally, most of circulations just serves for the main functions, ignoring his own existence value as a building object. Walking in the unconstrained and comfortable circulation could provide a better space experience. People will be attracted by the bright and spacious circulation, selecting more interesting and safer circulation to get through and venues. In this way, circulation could be changed into diversity and livability.

Contents

[REFLECTED HISTORY] --Church Renovation for Library and Cable Car Station	01
[THE GIANT FACTORY] --Temporary Giant Assemble Workshop	10
[THRIVING CORRIDOR] --Mix Use Hotel	18
[ENGRAVED MEMORY] --Memory Gallery	28
[CLOISTER AND CHAPTER] --Wood Installation	33

“Although architects cannot make vernacular structures one can attempt to recreate the processes through which the vernacular emerges in each project. In the place of invention, rhetoric and signification one can embrace convention, awkwardness and repetition. In this way buildings can achieve an auratic presence that comes through associative memory and direct experience.”

Adam Caruso



[REFLECTED HISTORY]

--Church Renovation for Library and Cable Car Station

Individual studioWork
Site : Liverpool December 2017

Explore the potential livability in Liverpool, designing a social intervention for the city dweller individually. The studio mapped a green route through existing spaces- parks, crematoria and clearings exploring a narrative which emerges from them and from the group research. Essential to the narrative is the sense of the city- embedding what city is, was and could be a narrative that will emerge from the places it passes through. The intervention will be bourne of its specific site and may include re-loving and repurposing a forgotten place.

TOXTETH AREA

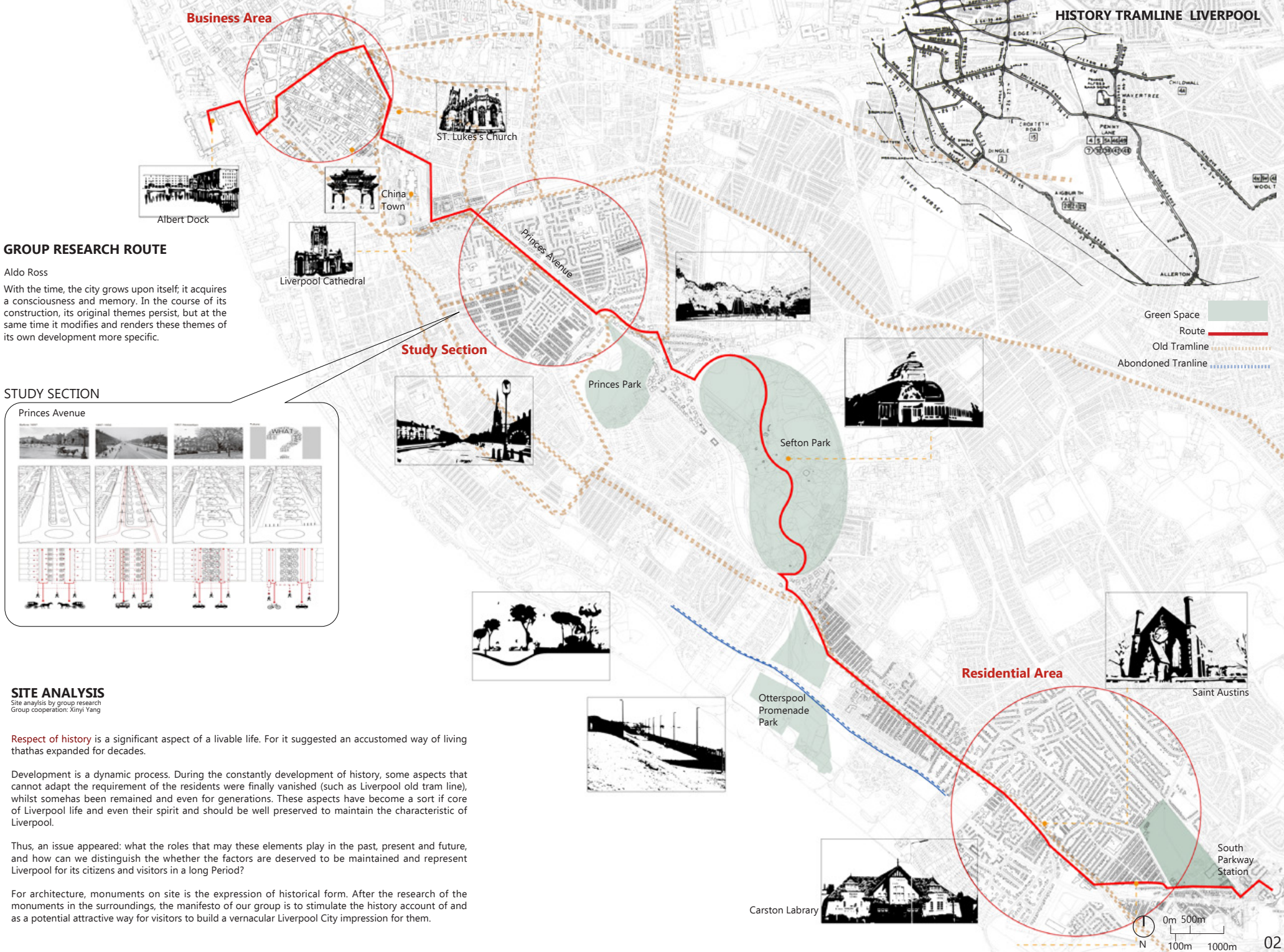
The 1981's riots eventually result in the dereliction of the area. However, prior to the dereliction that the area became known for and which was the reality for people living in the area over the last two or three decades.

WELSH STREETS

Breathe new life. Place first have already carried out a pilot project, bringing some terraced properties on High Park Street and Voelas Street in Princes Park back into use by remodeling the houses. The new plan includes communal gardens with improved streets and drainage.

GRANBY STREET

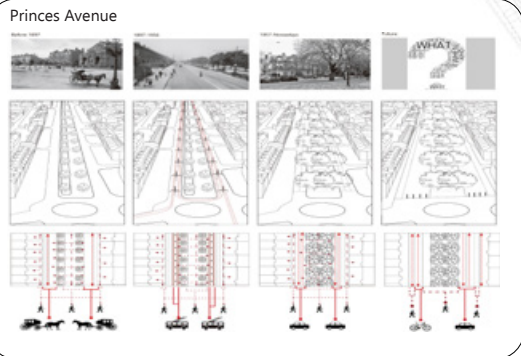
Granby is the most racially and ethnically diverse area of Liverpool, has the oldest black community in Britain and has been one of the most deprived communities in the country for decades



GROUP RESEARCH ROUTE

Aldo Ross
 With the time, the city grows upon itself; it acquires a consciousness and memory. In the course of its construction, its original themes persist, but at the same time it modifies and renders these themes of its own development more specific.

STUDY SECTION



SITE ANALYSIS

Site analysis by group research
 Group cooperation: Xinyi Yang

Respect of history is a significant aspect of a livable life. For it suggested an accustomed way of living that has expanded for decades.

Development is a dynamic process. During the constantly development of history, some aspects that cannot adapt the requirement of the residents were finally vanished (such as Liverpool old tram line), whilst some has been remained and even for generations. These aspects have become a sort of core of Liverpool life and even their spirit and should be well preserved to maintain the characteristic of Liverpool.

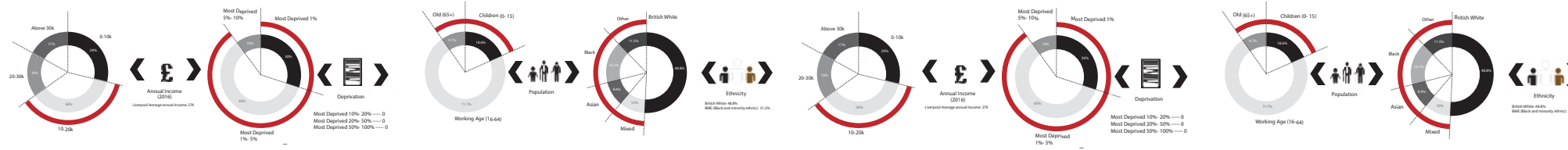
Thus, an issue appeared: what the roles that may these elements play in the past, present and future, and how can we distinguish the whether the factors are deserved to be maintained and represent Liverpool for its citizens and visitors in a long Period?

For architecture, monuments on site is the expression of historical form. After the research of the monuments in the surroundings, the manifesto of our group is to stimulate the history account of and as a potential attractive way for visitors to build a vernacular Liverpool City impression for them.

HISTORY TRAMLINE LIVERPOOL



NOWADAYS RESEARCH IN PRINCES AVENUE



Problem 1: Financial shortage
 Over half of population annual income below the Liverpool average annual income in the Toxteth area, and approximately 90% in deprived, the crime rate is also higher than the Liverpool condition, and there is no any large supermarket to satisfy the needs of local people.

Solution 1: Market
 The business center or periodical market are beneficial to stimulate the local finance, providing more employe opportunity for the low income people. Which is benefit to increase the safety. (33 night life)

Problem 2: Health Problem
 people are unhealthy, most of people are overweight, especially for the young generation.

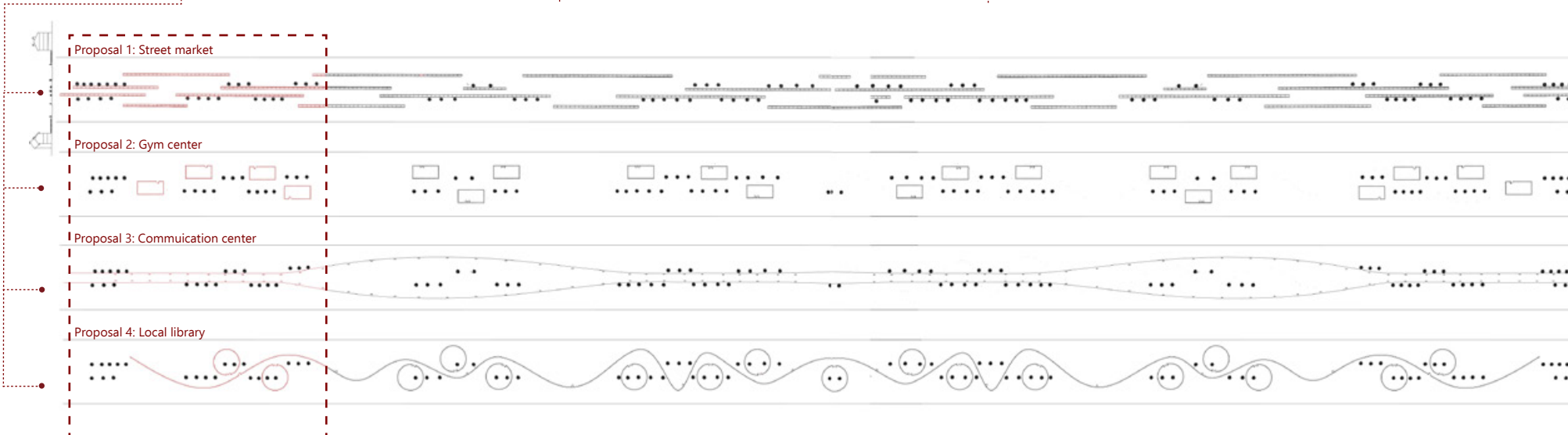
Solution 2: Gym Center
 Scatter places for team and individual sports through every work community and neighborhood, and make the action visible to passers-by, as an invitation participate. (A pattern language: 72 local sports). People need green open places to go to, when they are close they use them. But if the greens are more than three minutes away, the distance overwhelms the need (APL 60 accessible green).

Problem 3: Cultural conflict
 There are different local residential races in this district, and over 50% people live independently and isolate. The ingredient of these area are from different ages and social background.

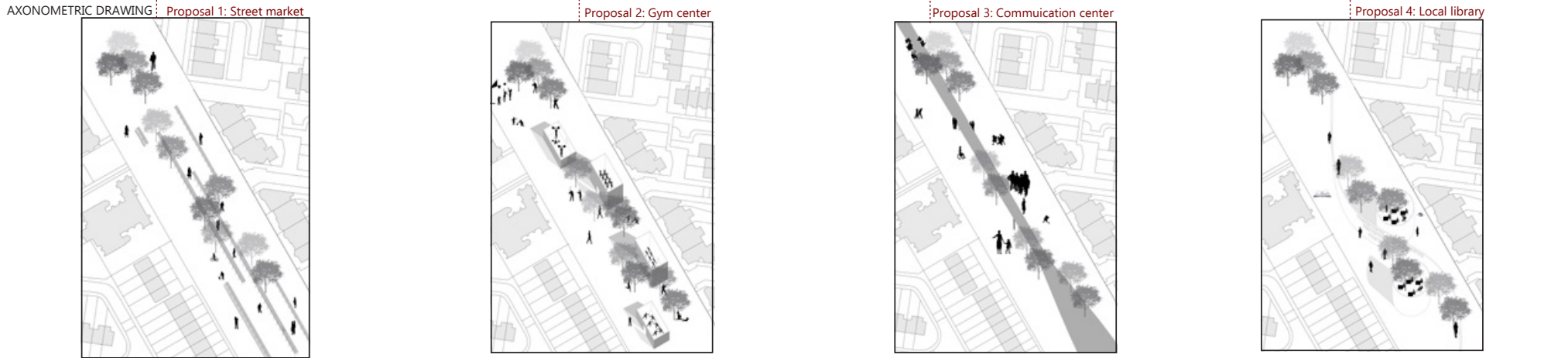
Solutions 3: Culture Communication Center
 Community facilities scattered individually through the city do nothing for the life of the city. To create these concentrations of people in a community, facilities must be grouped densely round very small public squares which can function as nodes (A pattern language: 30 activities nodes). Each subculture needs a center for its public life: a place where you can go to see people and to be seen (A pattern language: 31 promenade).

Problem 4: Safety Risk
 The crime rate is higher than the average level of Liverpool city, this district is not safety.

Solution 4: Public Library
 Improve the standard of education, provide more job opportunities, people could use the book as the communication methods.



MOMENT





DESIGN STRATEGY



Changing the tram line into the cable car station to introduce the sky transportation but not change the original transportation system, which is also reflect the industry revolution period history.



Delate the abandoned roof of the church, invite more natural light getting through, shpwing the livability.



Design the glass structure box to keep the church facade completely, and invite more light for the library



Add some floors to create more space for different functions.



Using the different layer of the church to show the times change, add large staircase as the connection to these different layers. Create more functions on the stairs to save the space, and design some wide platforms to attract activities.



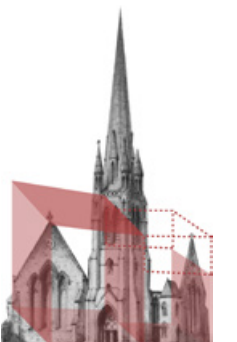
Different directions of staircase to create the convenient circulation, which is easily for people to move around and communication



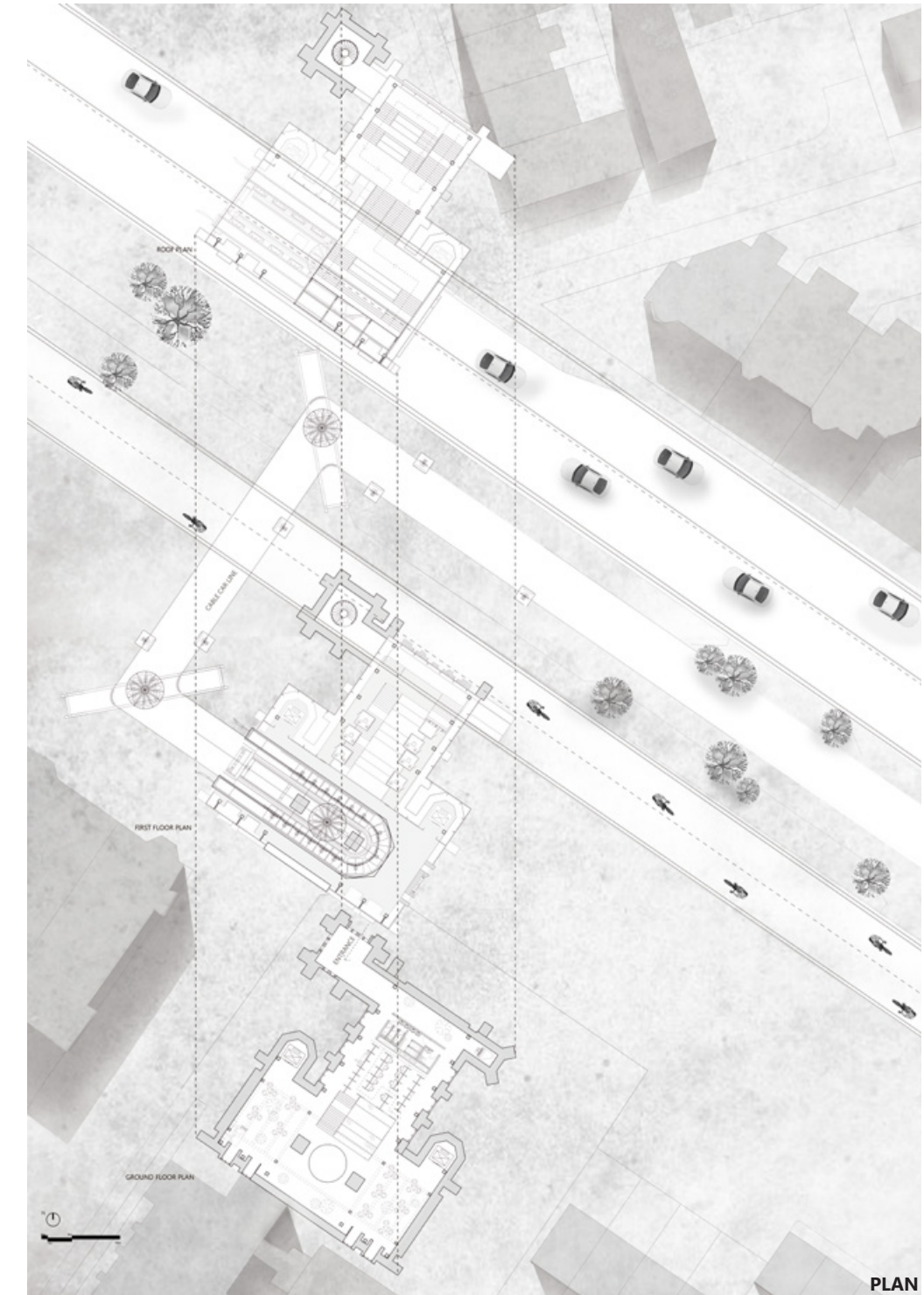
The hole concept design comes from the cable car machine, using the same shape to express the continuous of the time.



The cable car station on the back of the church, which will do not destroyed the facade of the church, keep the historical monument completely.



Design the interior space for library, and the exterior space for the cable car station.



BOOK SIGHTSEEING

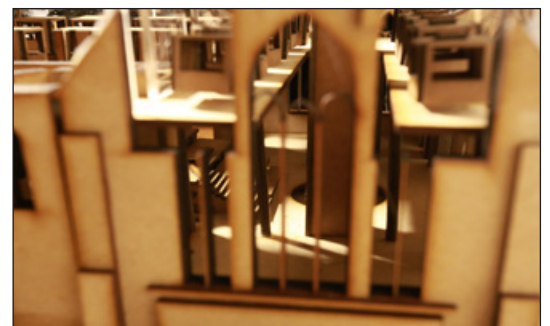
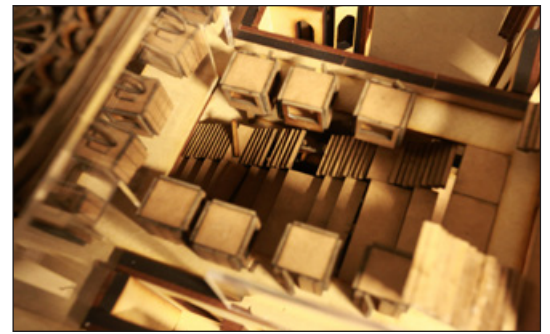
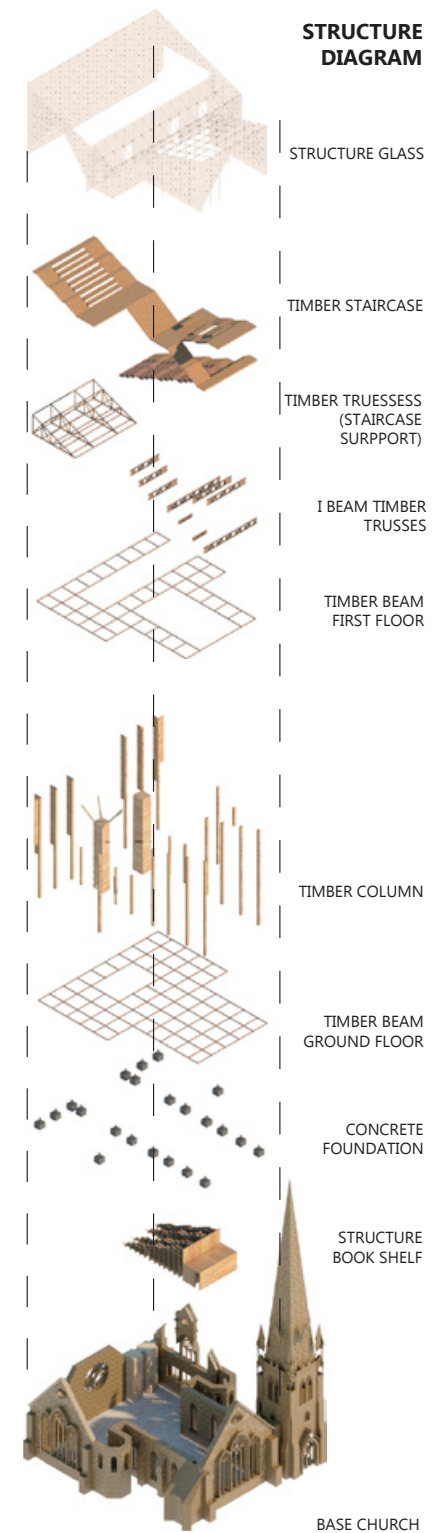
Due to the dynamic memory research (group site research), the Welsh Presbyterian Church in the Princes Avenue has been abandoned several years, which is a landmark building for the local people. If it could be give new function which benefits local residents, it will be the suitable way to achieve the livability. The church will be renovated as the library (satisfying the nowadays needs) and the cable station (recalling the tramline history in the street). Using the small cable car unit to define the library space, achieving the harmonious between movable cable car and quiet library. In this way, the cable car unit could be considered as the movable library. People could still read books on the exterior of the Library, the cable car moving speed will slower than the normal one.

POSSIBLE ACTIVITIES





LONG SECTION





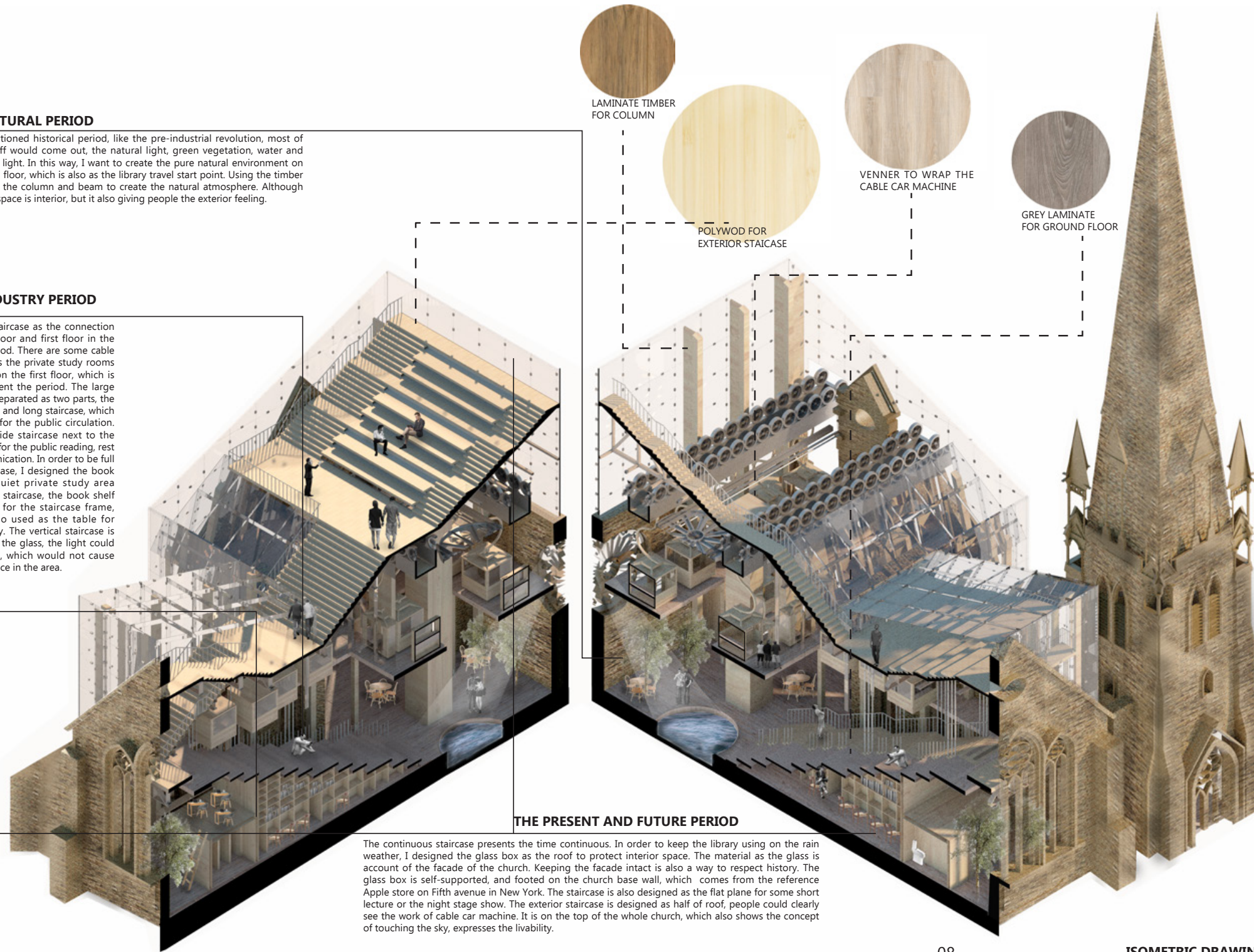
THE NATURAL PERIOD

When mentioned historical period, like the pre-industrial revolution, most of natural stuff would come out, the natural light, green vegetation, water and the natural light. In this way, I want to create the pure natural environment on the ground floor, which is also as the library travel start point. Using the timber material as the column and beam to create the natural atmosphere. Although the whole space is interior, but it also giving people the exterior feeling.



THE INDUSTRY PERIOD

The large staircase as the connection of ground floor and first floor in the industry period. There are some cable car rooms as the private study rooms for people on the first floor, which is main represent the period. The large staircase is separated as two parts, the one is small and long staircase, which is designed for the public circulation. The large wide staircase next to the small one is for the public reading, rest and communication. In order to be full use of staircase, I designed the book shelf and quiet private study area beneath the staircase, the book shelf is designed for the staircase frame, which is also used as the table for people study. The vertical staircase is designed as the glass, the light could get through, which would not cause the stark space in the area.

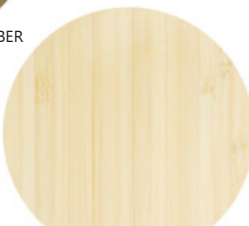


THE PRESENT AND FUTURE PERIOD

The continuous staircase presents the time continuous. In order to keep the library using on the rain weather, I designed the glass box as the roof to protect interior space. The material as the glass is account of the facade of the church. Keeping the facade intact is also a way to respect history. The glass box is self-supported, and footed on the church base wall, which comes from the reference Apple store on Fifth avenue in New York. The staircase is also designed as the flat plane for some short lecture or the night stage show. The exterior staircase is designed as half of roof, people could clearly see the work of cable car machine. It is on the top of the whole church, which also shows the concept of touching the sky, expresses the livability.



LAMINATE TIMBER FOR COLUMN



POLYWOD FOR EXTERIOR STAICASE



VENNER TO WRAP THE CABLE CAR MACHINE



GREY LAMINATE FOR GROUND FLOOR

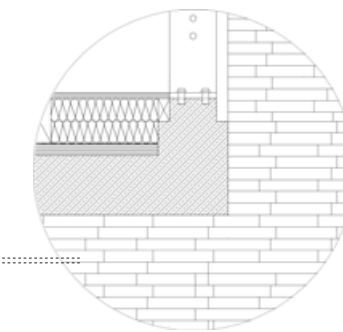
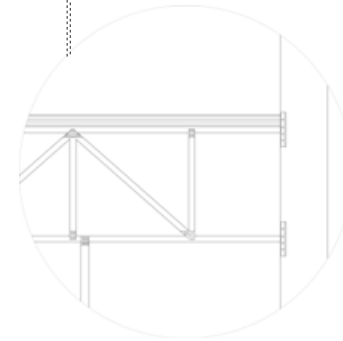
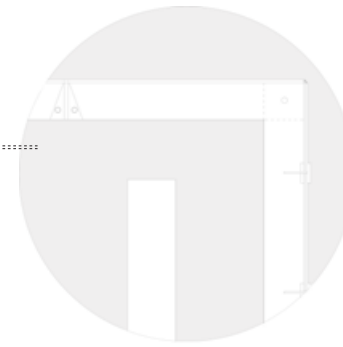
- ① Laminate timber column 400mm×400mm×15000mm
- ② Glass structure Triple glass wall 18mm, 300mm deep
- ③ Polywood floor 100mm Laminate timber trusses 50mm (bolted connection)

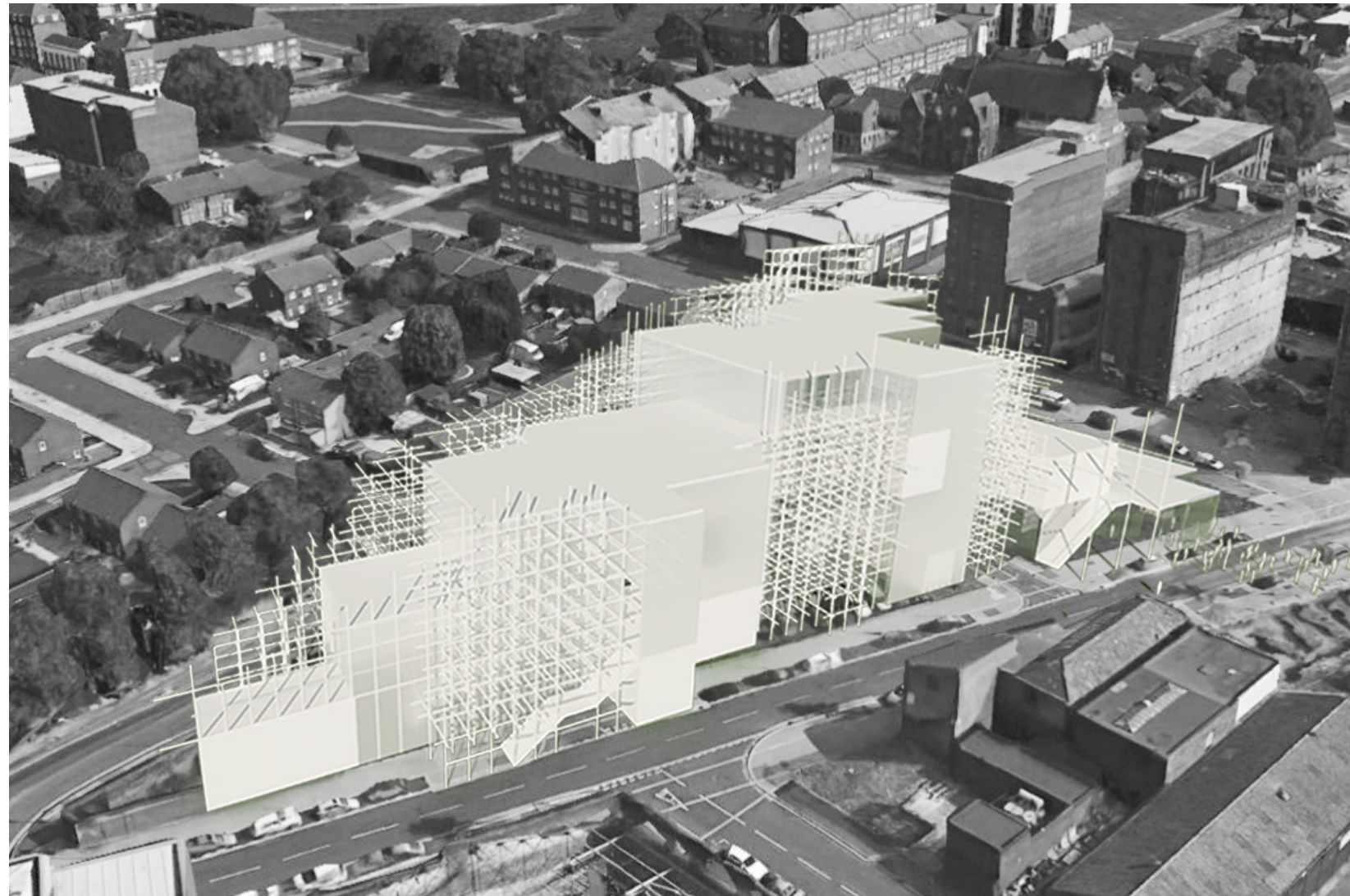
- ④ Polywood floor 100mm Laminate timber beam195mm×195mm Insulation 195mm Waterproof 5mm Polywood floor(ceiling) 100mm

- ⑤ Original church stone1000mm thickness 5000m foundation

- ⑥ Polywood floor 100mm Laminate timber beam195mm×195mm Insulation 390mm Waterproof 5mm

- ⑦ Bolted steel connection Concrete slab 550mm×550mm×1000mm





[THE GIANT FACTORY]
 --Temporary Giant Assemble Workshop
 Individual Studio Work
 Site: Liverpool December 2016

Merseyside has long held a fascination with giant proportions; whether that be Liverpool Lime Street station as, for a time, the largest single-span iron structure in the world, or New Brighton Tower; formerly the tallest building in Britain. This attraction continues in the twenty-first century in the form of giant puppets invading the city. First seen as part of the 2008 European Capital of Culture celebrations with La Machine's spider 'La Princess,' followed by Royal De Luxe's 'Sea Odyssey' in 2012 remembering the centenary of the sinking of the Titanic and 'Memories of August 1914' commemorating Liverpool's World War One centenary. Royal De Luxe and the giants are set to return to the city in 2018 to mark ten years since the Capital of Culture celebrations in 2008.

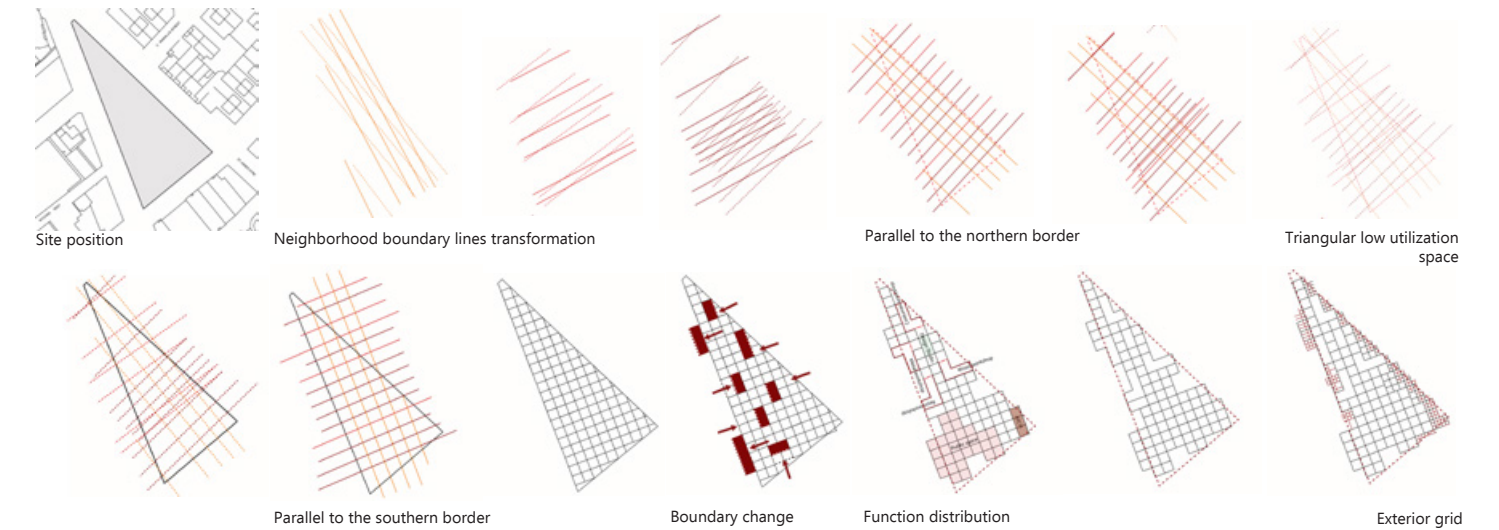
Based on Royal De Luxe's now longstanding partnership with Liverpool, the studio is about designing a temporary creative workshop space for them in the Baltic Triangle. The workshop needs a arch entrance, which could have a connection with the workshop.

SITE ANALYSIS



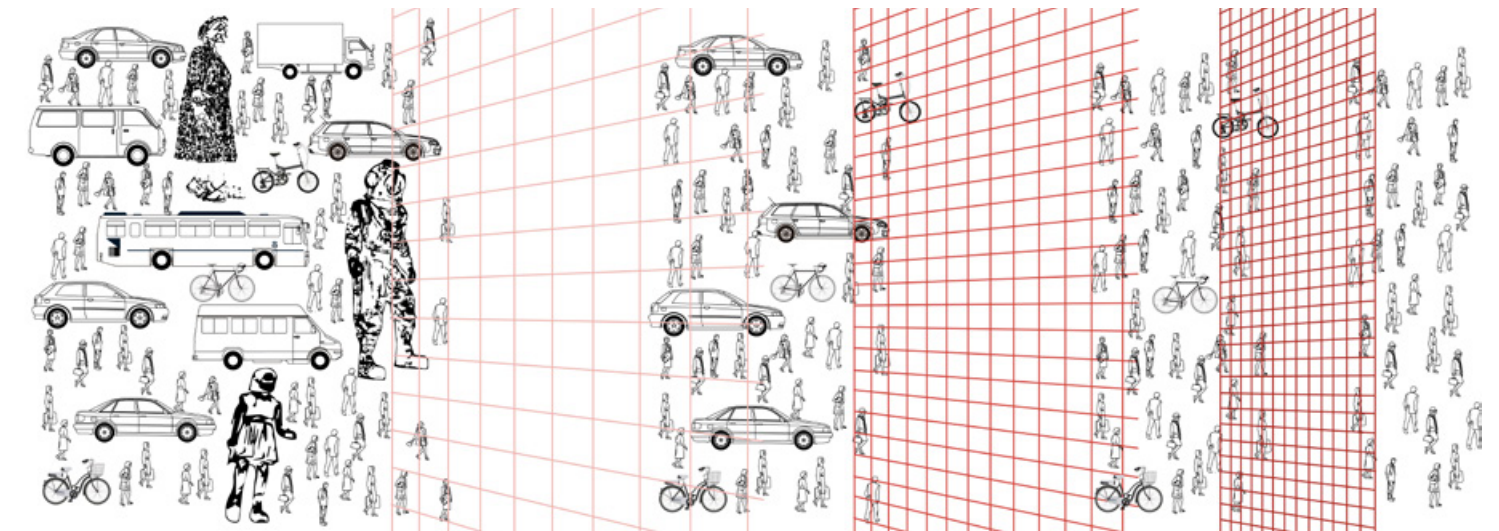
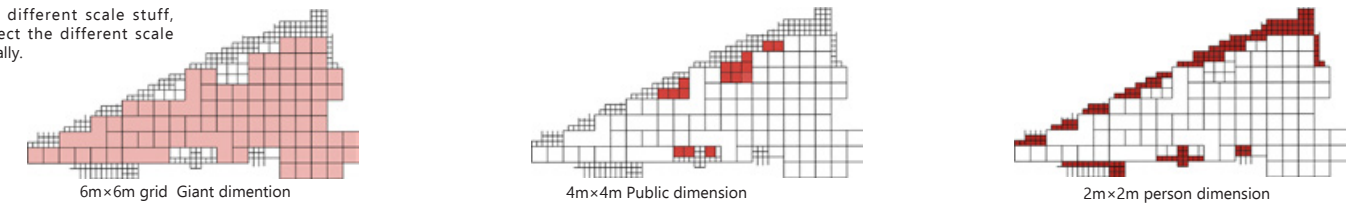
PROGRAM ORGANIZATION

Due to the neighborhood boundary lines, creating the grid pattern landscape. Using limit distance between columns to define the layout and hidden the workshop.



GRID ORGANIZATION

Filter different scale stuff, connect the different scale naturally.





LIVERPOOL WORLD MUSEUM

LIME STREET STATION

CHINA TOWN

LIVERPOOL CATHEDRAL

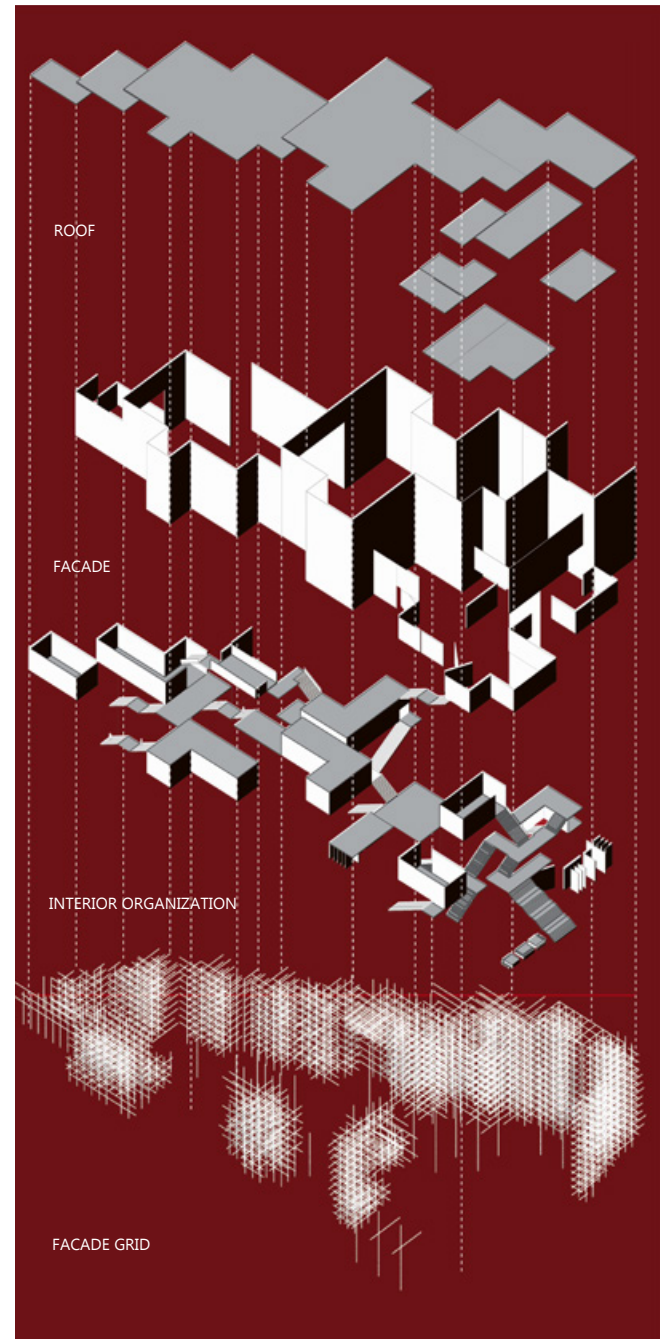
ALBERT DOCK

GIANT ROUTE

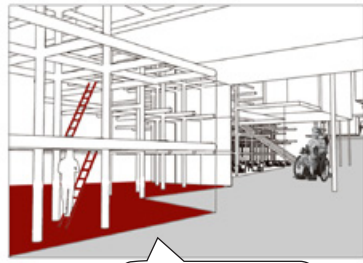
The first of these tasks involves the production of a route for the giants to follow on their next show in 2018. The cultural celebration will take place from the whole city of Liverpool, the Giants need to get through the city landmark as much as possible to attract more people. The streets which giants will pass through need to be wide enough, which will be easier for staff to manipulate the giant and keep the crowd safe.

STRETCHED FILTER
Culture is the crystallization of human wisdom, which is also the purest part of human history. However, as the economic development, especially for the information age, with the speed of information dissemination and the amount of information increasing day by day, more cultures are filled with people's daily life. Compromise of life and the rush of careers lead people to discern the real face of culture. For cultural arousal, we need a natural barrier, or filter, to purify our lives. Similarly, this different size of shelf implies that the culture of filtration, in essence, it has done different scales of people, giants, cars, bicycles and other life-related tools to filter, in exchange for a quiet purely assemblage workshop for cultural celebration.

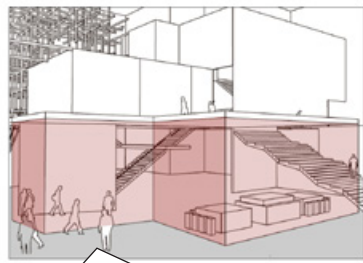
ISOMETRIC DRAWING



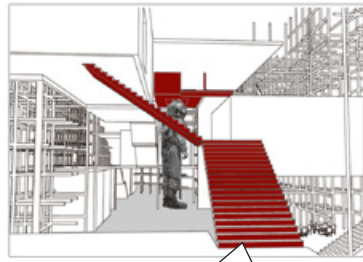
INTERIOR SPACE



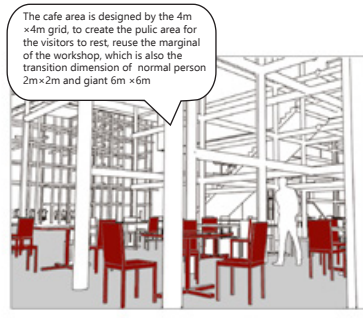
Ladder as the vernacular connection to the different height of the grid, which could provide different views for the visitors, watching the giants move track from various position



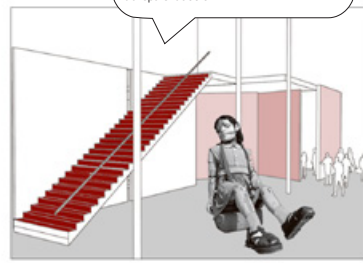
The glass facade of public space, which could be distinguish easily by the visitors, attracting the people. The large stairs with 6m width which provide a public space for people seating and chatting. The whole circulation is coherent in the public part. People could move freely from any spaces



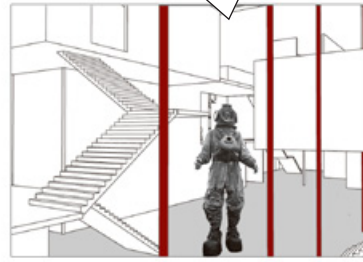
The giants are installed under the design studio, the designers could master all information of the giants, the staff could see the installation process in any degree of the workshop.



The cafe area is designed by the 4m x 4m grid, to create the public area for the visitors to rest, reuse the marginal of the workshop, which is also the transition dimension of normal person 2m x 2m and giant 6m x 6m



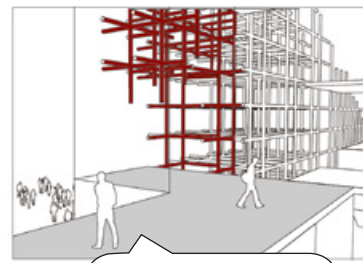
The giant could rest on the outside of public space, where people could gather around to watch the giants activities. The public door are also designed by glass, the interior people could also see the activities through the transparent doors



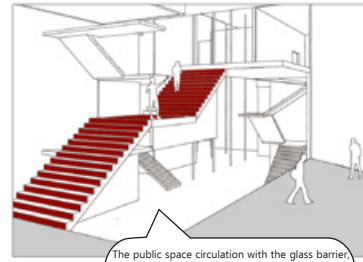
Giants are trained in the workshop, which is designed by 6m x 6m grid to define the track of giants. The different planes also help people to observe the giant nimble degree, and the cooperation and operation methods by the workers.



The entrance to the upper floor workshop, which benefits for staffs split-flow, improve the efficiency and create a wide semi-public communication space, the stairs could be the seats for the staffs rest on the midway.

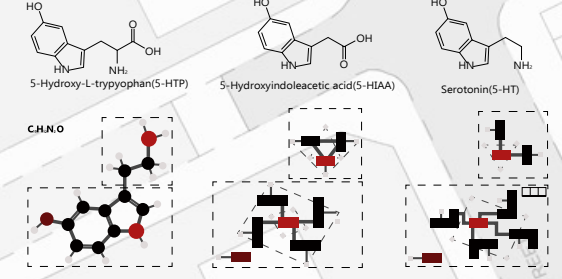


The top of the workshop is still a pavement to connect the other parts of the whole factory. The 2m grid frame permeate the inner space, which represent the concept continuity



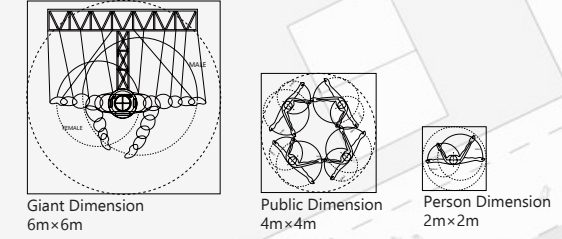
The public space circulation with the glass barrier, people could see the circulation of the public space clearly, which emphasis the leading character stimulating the movement. The stairs not only have the circulation connection effects, which are also as the function parts (like chatting, sitting) of the whole building.

HAPPINESS MOLECULAR FORMULA



Interior organization

With the expectation of pure culture, as well as the better life for the future, the layout of the building will be arranged in accordance with an inherent molecular chain to meet the functional needs, but also bring the natural properties of this formula.



WOOD WORKSHOP

Using the special machine and the design information to assemble the giant for the wood part. All kinds of wood material and elements store in the boxes on the shelf.

ASSEMBLE CIRCULATION

The large stairs are designed for the workers to assemble the giant in any degree, and connection to the different workshops, which is a coherent circulation.

DESIGN STUDIO

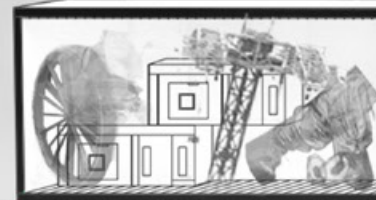
On the center of the whole workshop, controlling the produce process of the giant assembling.

GIANT ENTRANCE

The giant entrance is designed by 6m width and surrounding by the 2 m grids, which shows the different dimensions between normal people and the giant.

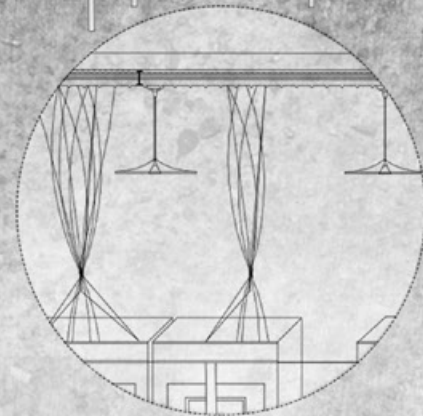
LARGE SITTING STAIRS

People could sit on the stairs and go through for the function room and exhibition space.



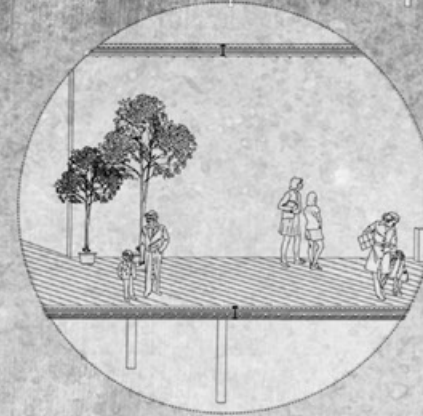
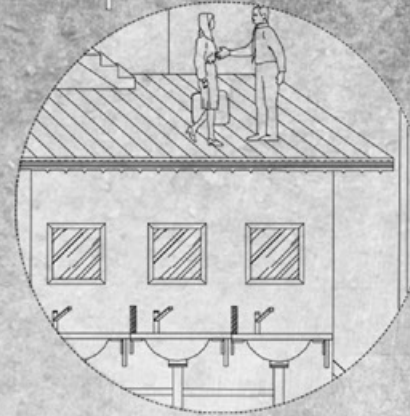
STORAGE ROOM

On the side of the giant workshop, which is convenient to convert the assemble elements for the workshop. The slide door could open for the truck.



6M GRID

6m grids are designed for testing giant. The width of the grid is similar with the one-way traffic, which is convenient to adapt the real parade.



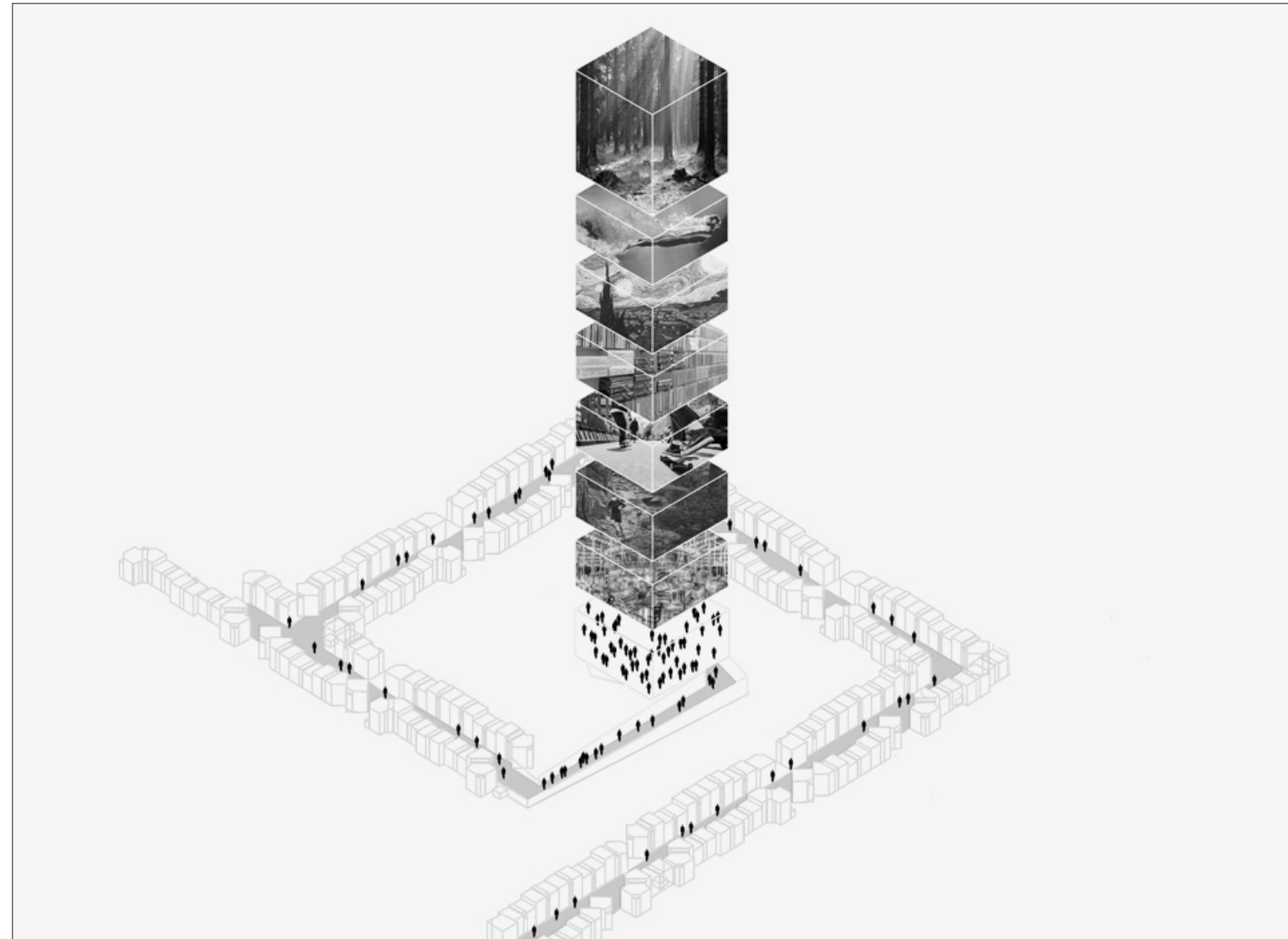
PUBLIC SPACE

Glass as the main material for the public visiting, which is easy to distinguish with the polycarbonate. The transparent material advocates the people to enter the space and produce some activities. The wide stairs are also easy for people to move around and communication.

MATERIAL

Polycarbonate is the primary material to build the workshop. It is light and semi-transparent, which is benefit for hidden the giant before parade and satisfying the need for temporary.



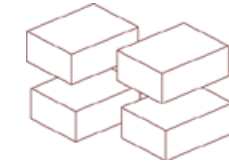
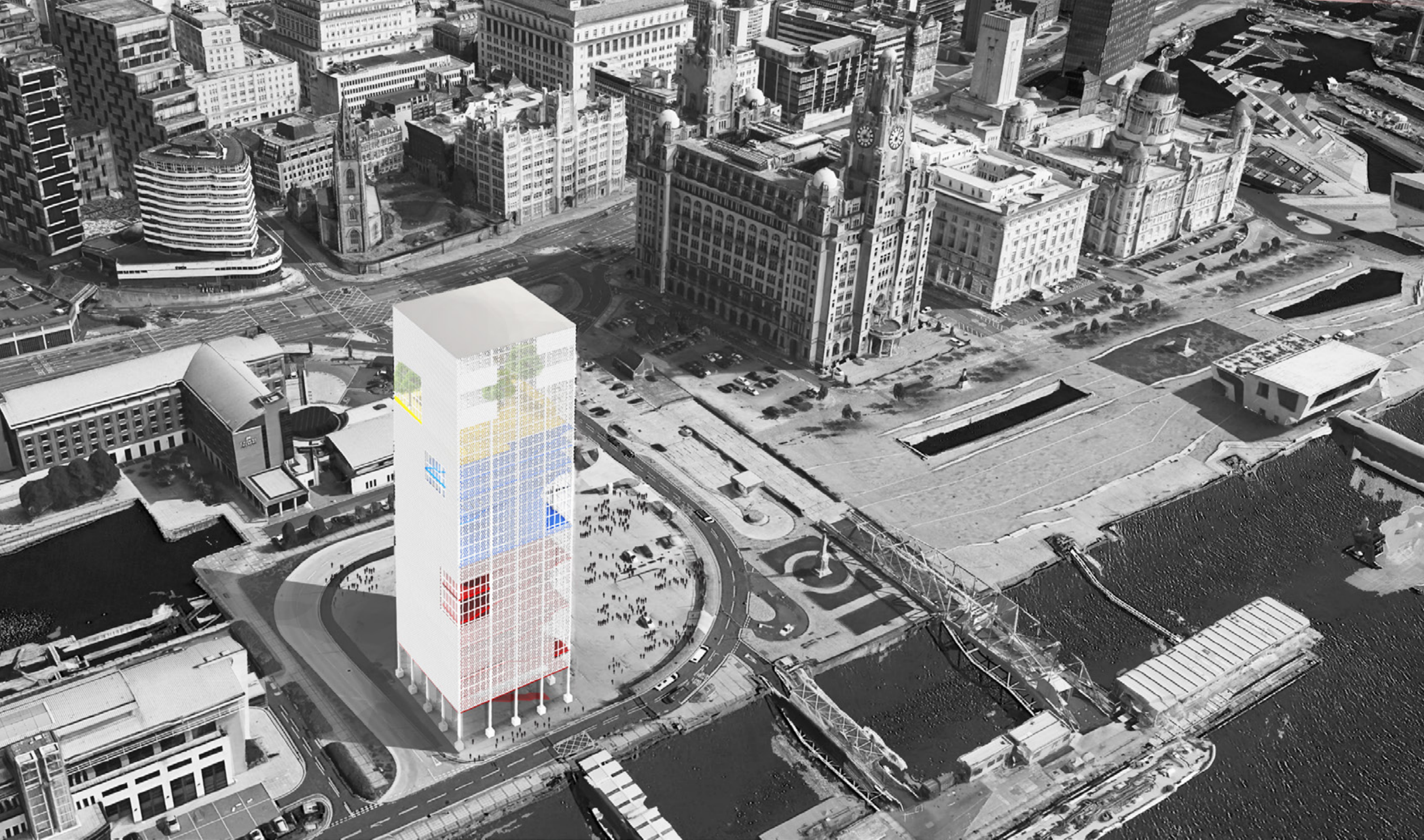


[THRIVING CORRIDOR]
 -- Mix Use Hotel
 Individual Studio Work
 Site: Liverpool June 2017

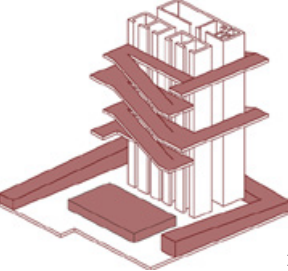
Since the European Capital of Culture celebration in 2008, Liverpool is increasingly becoming a destination for both business and pleasure, with visitors arriving to see the city's sights and culture, as well as specific events such as Cunard's 'Three Queens' and Royal De Luxe's 'Giant spectacular' which we are now all familiar with. In addition to those visiting for the day, the city see a large number of overnight visitors who all need a place to stay – one option being a hotel.

When I think of the hotel, the first one to draw attention is the dim, non-ventilated corridor, a small room, in addition to residential features almost no other function of a living space. In order to change the inherent hotel mode, the hotel is not only a temporary nonsense place. Focusing on the corridor circulation, transformed it into a variety of communication space. It not only provides the necessary connection function, at the same time, it also adds their own characteristics, changing the daily status of people only communicating with the phone, meeting more new friends.

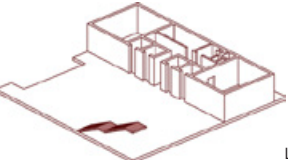




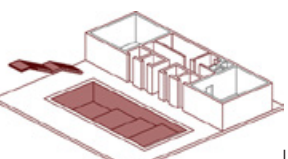
LEVEL 17-20
SUITE



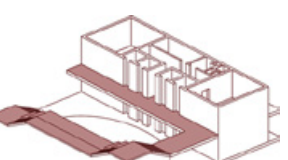
LEVEL 15 -16
INTERIOR GARDEN



LEVEL 14 RESTAURANT



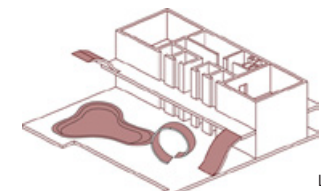
LEVEL 13 SWIMMING POOL



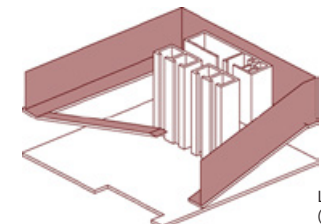
LEVEL 11-12 ART GALLERY



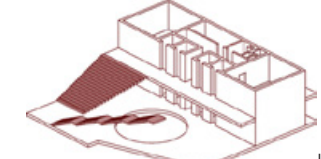
LEVEL 9-10 LIBRARY



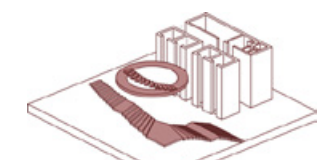
LEVEL 7-8 SKATEBOARDING PLAZA



LEVEL 4-6 GYM
(INTERIOR RUNNING TRACK)



LEVEL 2-3 MERRY-GO-ROUND



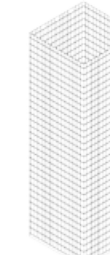
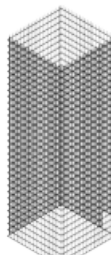
LEVEL 1 BAR



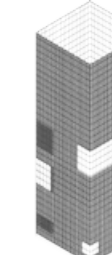
GLASS PANEL



WINDOW FRAME



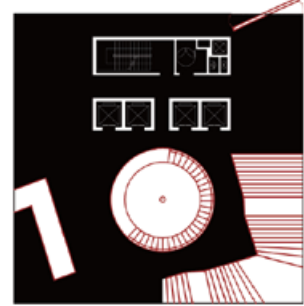
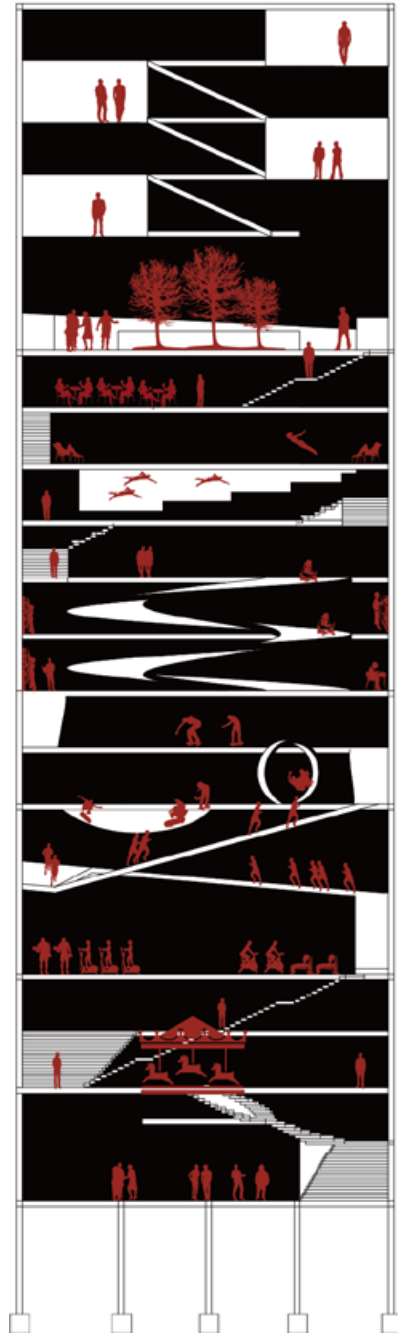
ALUMINUM MESH FACADE



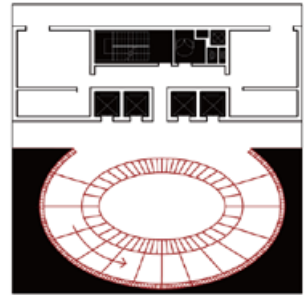
DOUBLE FACADE
DESIGN PROCESS

FUNCTION

FUNCTION SECTION



LEVEL 2-3 MERRY-GO-ROUND
Carousel placed in the middle of the sink platform, as a way to communicate the middle of the space.



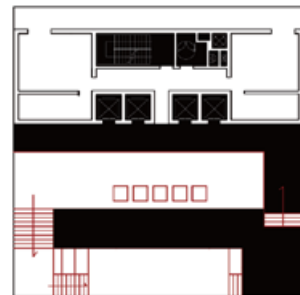
LEVEL 9-10 LIBRARY
The revolving public library continues the fluidity of the skateboarding space so people can read their favorite books as they walk around the stair.



LEVEL 14 RESTAURANT
Continuation of the square plan.



LEVEL 4-6 GYM
Indoor fitness center with 9m high, in order to simulate the real slope runway, which run around the glass curtain wall, so movable people could see the whole view of Liverpool.



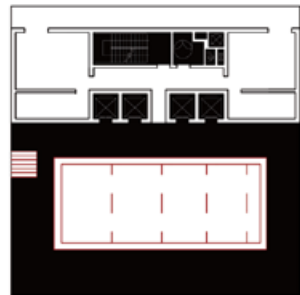
LEVEL 11-12 ART GALLERY
The Museum of Art is located above the library and under the swimming pool. The clear water wave refracts through the light into the museum of art, increasing the flexibility of space.



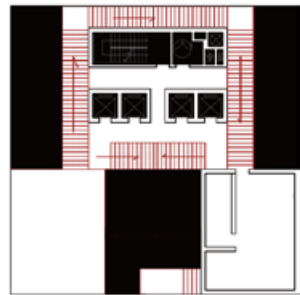
LEVEL 15-16 INTERIOR GARDEN
Planting trees in the middle and around the glass curtain walls to create a forest environment and promoting people communication, which also echoes with the gymnasium.



LEVEL 7-8 SKATEBOARDING PLAZA
Indoor skatepark offers a variety of spaces, attract more tourists, creating a different circulation. It is also a good place for everyone to communicate.

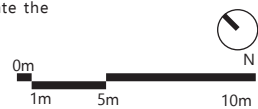
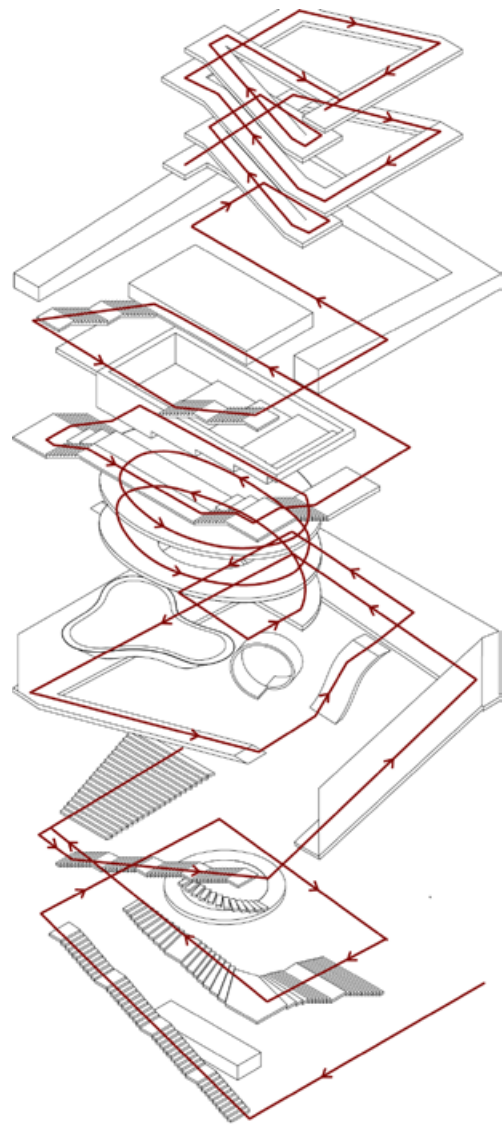


LEVEL 13 SWIMMING POOL
Swimming pool follows the hotel's square plan, the rules and regulations of the design also enhance the utilization of space.

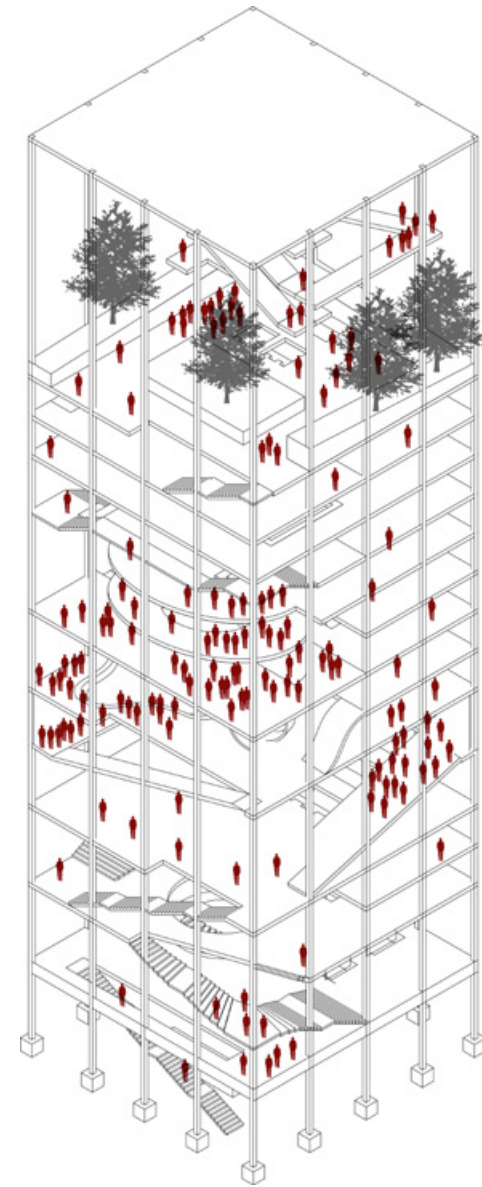


LEVEL 17-20 SUITE
Staircase around the curtain wall, the forest under the house to create the feeling of Temple of Heaven

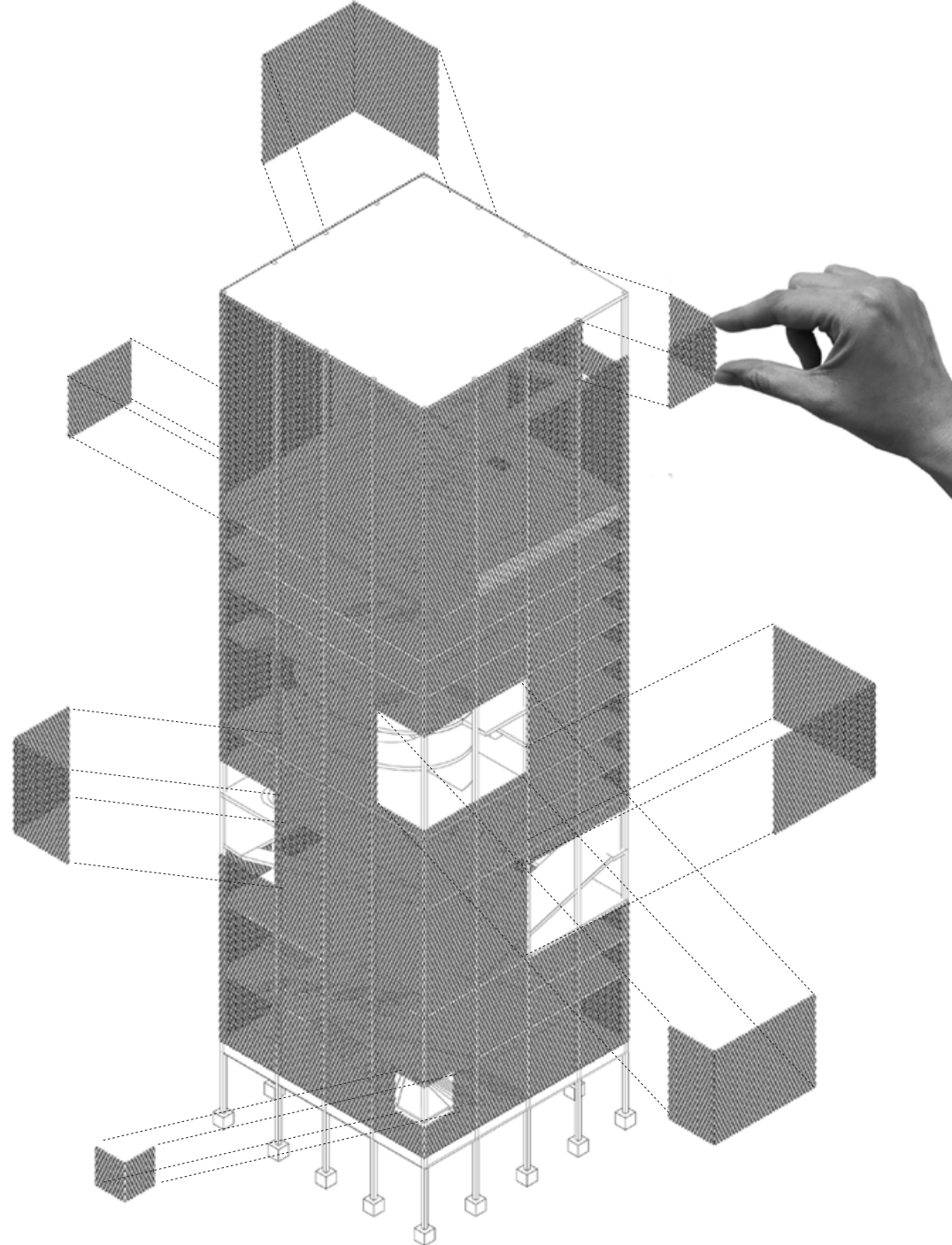
DIAGRAM PLAN



CIRCULATION



ACTIVITIES AND PEOPLE DENSITY



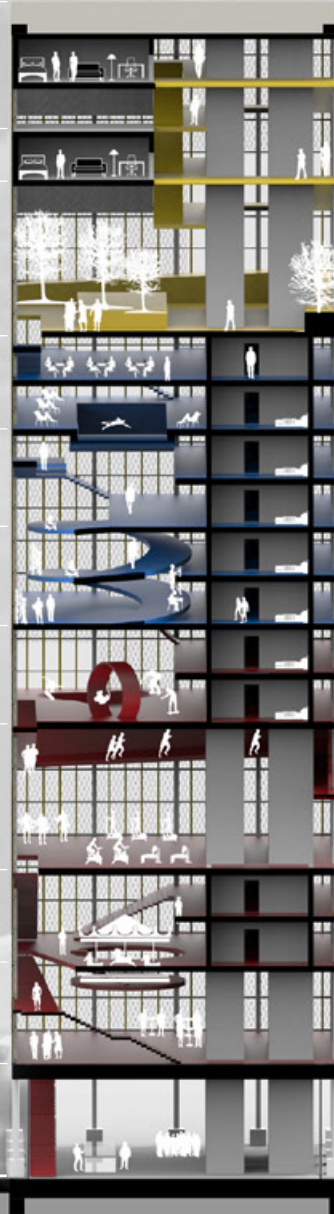
DOUBLE FACADE



BLUE

The blue zone is relatively quiet area, it mainly includes libraries, art gallery, swimming pool, and restaurant, the reason why the swimming pool designed in the quiet area, because the water always bring the power of quiet. Sunlight get through the water, penetrate the gallery, will bring a natural artistic effect, more in line with the theme of art. The Library designed following the central spiral staircase, which promotes people's desire for books, and enhance the communication between people.

- 66M ROOF
- 60M SUITE
- 57M INTERIOR GARDEN
- 48M RESTAURANT
- 42M SWIMMING POOL
- 36M ART GALLERY
- 33M LIBRARY
- 27M SKATEBOARDING PALZA
- 18M GYM
- 12M MERRY-GO-ROUND
- 6M BAR
- 0M LOBBY

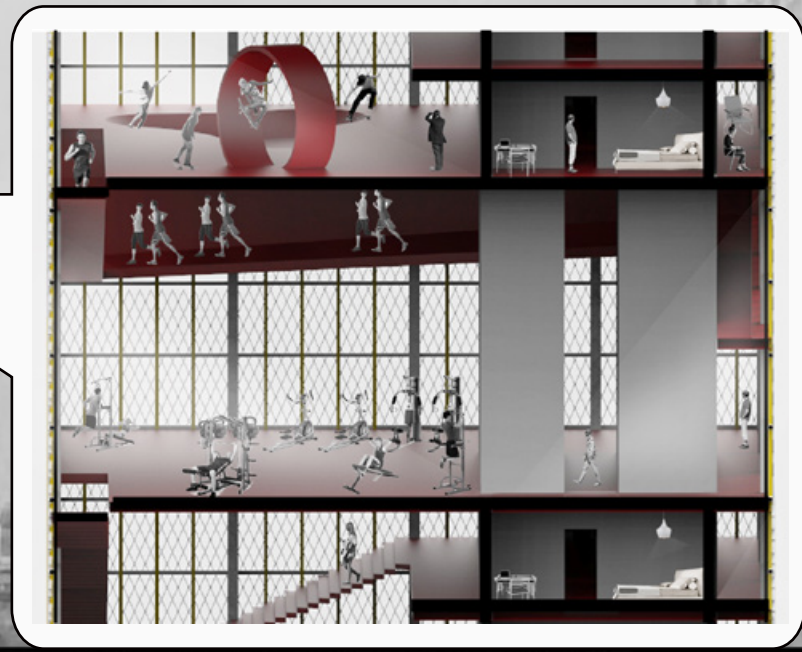


YELLOW

Yellow represents the same warm color as the sun, which is suitable for roof part that full of natural vitality. In order to create a different living feeling for the suite's customers, the interior garden has been purposely designed to natural style, which evokes the river view. The staggered staircases in different heights aims to give people different feeling about the nature, and generates more communication as events take place. Just as Hayao Miyazaki portrays the city of heaven, in the highest sky, escaping from the noisy world to find a real nature.

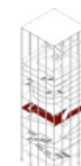
RED

Red represents a dynamic and passionate, the bottom floors use red to bring a positive and optimistic feeling, and attract a large number of tourists patronize the hotel. For the layout of the red space, as much as possible into the public space, even if not living in this hotel, people can still experience the space. Indoor runway simulation of the natural climbing, 9m height also gives a real outdoor experience, The runway surrounded by the glass curtain wall, which provide a clear view for the sea.



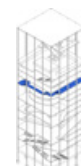


I II
III IV



I. Skateboarding Plaza

Overhanging follows the shape of the skateboarding plaza, spectators could view them on the upper floor.



II. Art Gallery

The upper swimming pool floor could create the feeling that people visit the art gallery under the water.



III. Interior Gardern

Creating the feeling of sky forest, people moving on the cloud.



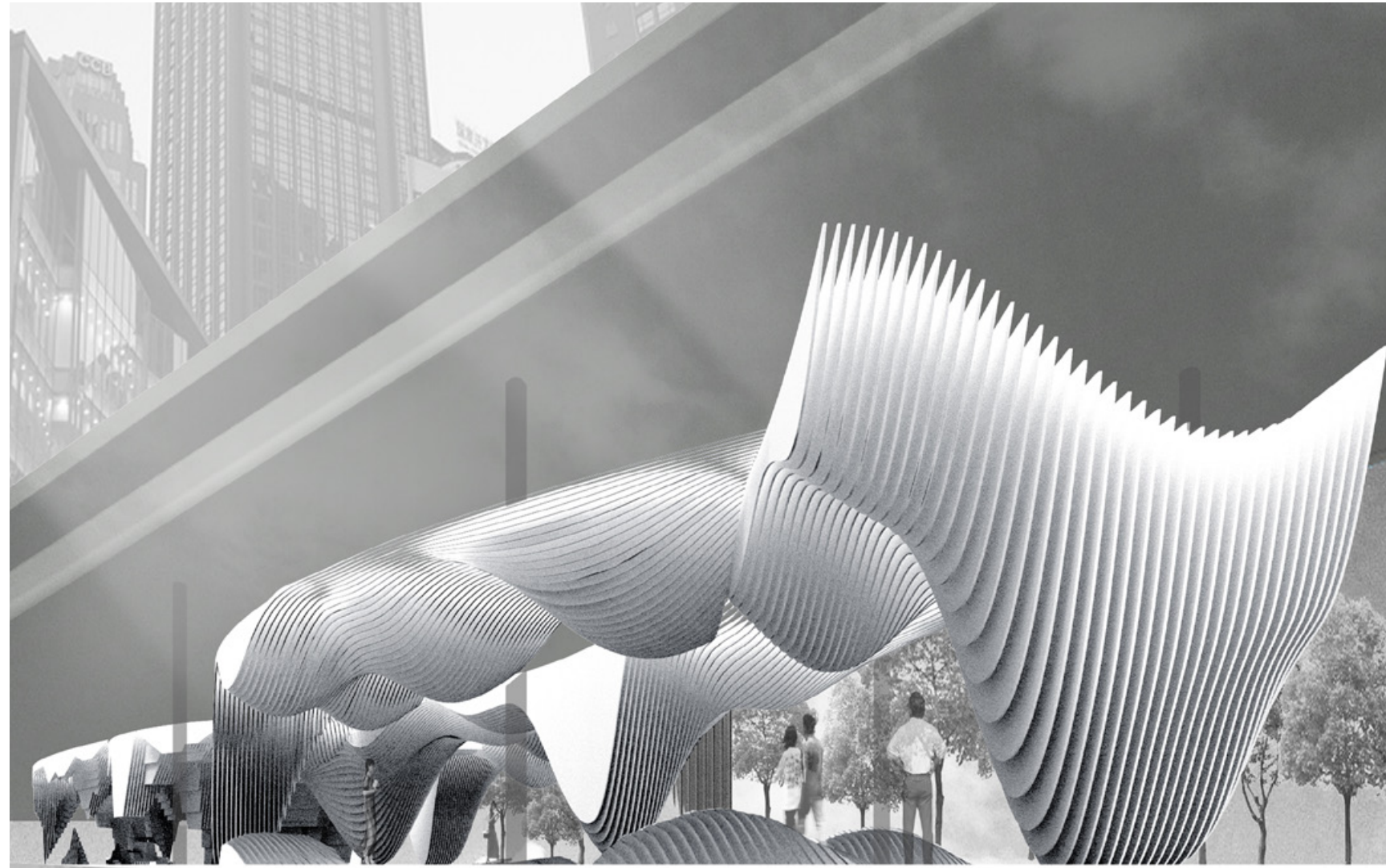
IV. Gym

The runway surrounded by the glass curtain wall, which provide a nice view when people build the body.



V. Library

Free organization bookshelf and furniture provides natural space experience.



[ENGRAVED MEMORY]

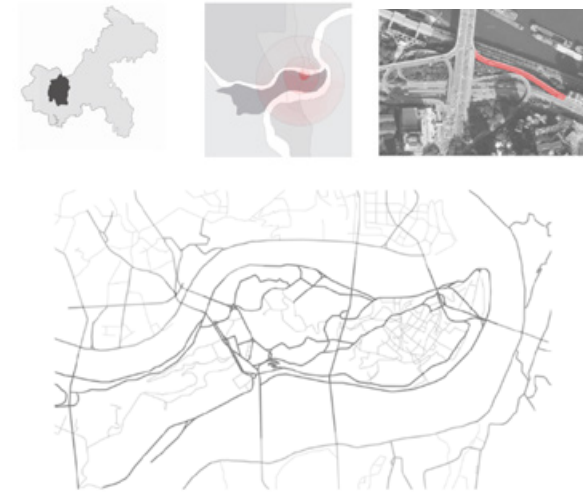
--Memory Gallery

Group Competition Work: UIA-HYP CUP 2017 INTERNATIONAL STUDENT COMPETITION IN ARCHITECTURE DESIGN
 Group member: Shuyi Hao, Xinran Li Site: Chongqing, China August, 2017

The metropolis of the 21st century takes up too much room... It sprawls.. It must not keep evolving simply by expanding. "A great building must begin with the unmeasurable, must go through measurable means when it is being designed and in the end must be unmeasurable." -Louis Kahn

In our project we begin with the history, which is definitely unmeasurable. Then the translation started- by interpreting events happened in the flow of time and the impression those events give upon us. Finally a space appeared, where people could reflect on history of the city. In this process, the effect of the space on audiences, and the spirit it conveys, are going back to unmeasurable again. We are using the tangible space to reflect an intangible flow of time, and finally build an intangible world of spirits

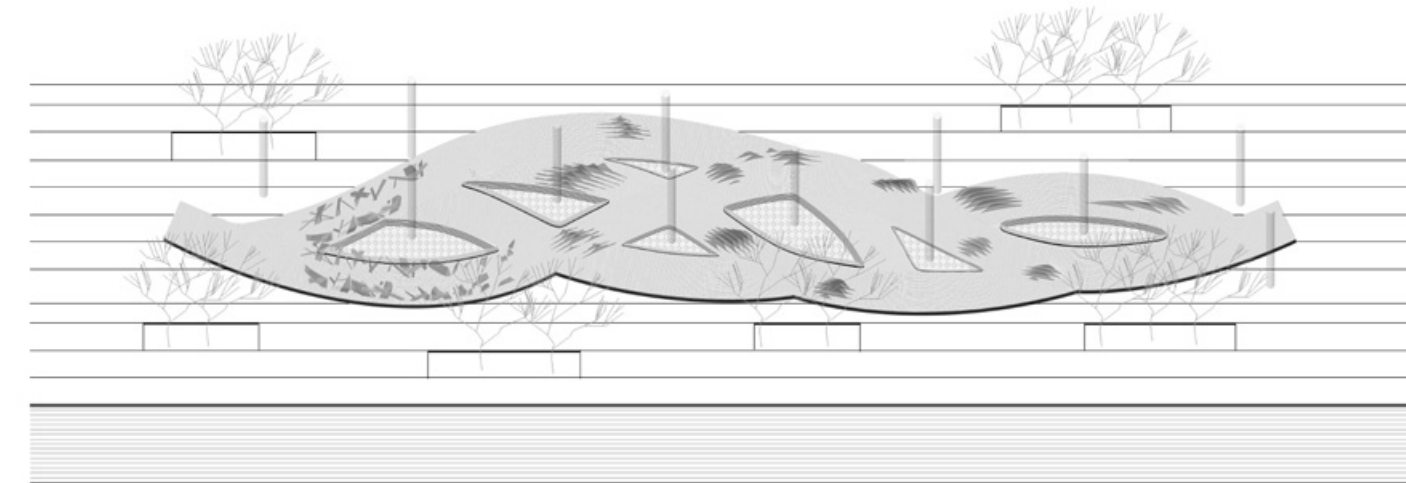
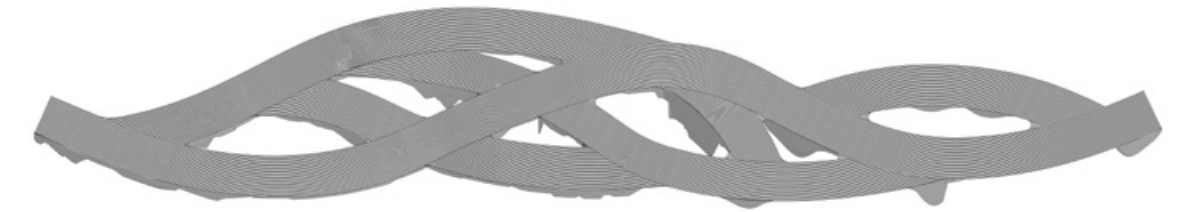
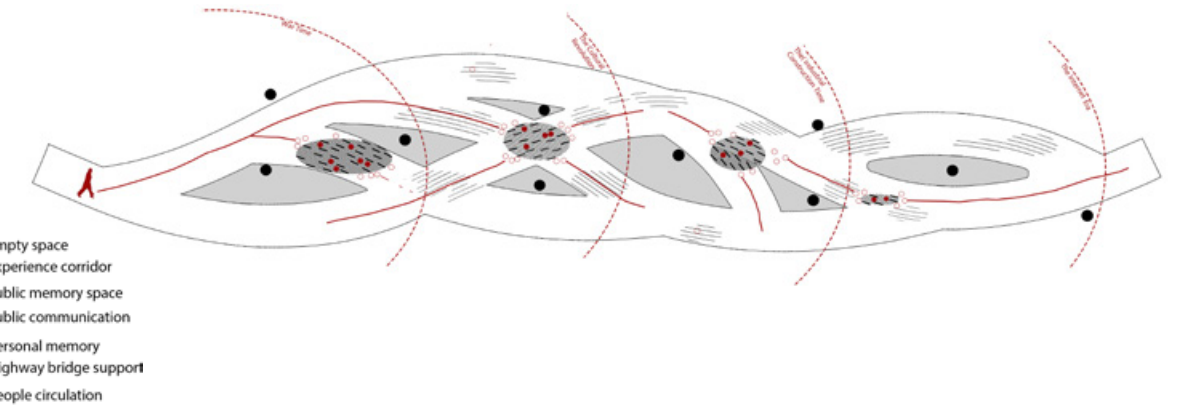
After a series of researches, we found the overpass, as a necessary part of the transportation system in a city, has occupied a large area of the urban land, but the space under it is always in a bad condition and lacking in administration.



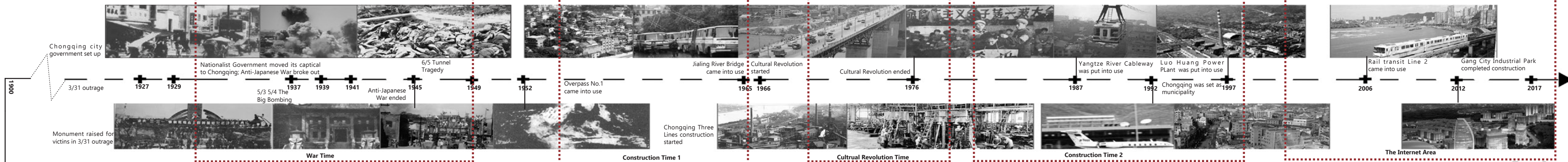
Chongqing is an inland mountain city, and famous for its overpasses, which could be seen everywhere. Therefore, we chose the city center of Chongqing-Yu Zhong District, as our building site



Overpass can also be seen as a connection, a connection of two destinations, of two people, of life and death, of past and future. People living in cities are always in a rush, so we hope we could create a space where people could slow down and be immersed in a spiritual world. "All truly great thoughts are conceived while walking." Elements are taken out from the history of Chongqing and formed a long walking gallery. In this gallery, people are wrapped around by the chaos, conflict, solidity and fluidity engraved out from the history; they could find themselves when they are confronted with deaths directly.



TIME LINE



DESIGN PROCESS

1. War Time- Deconstruction- Chaos

Because of its strategic significance during the war, Chongqing suffered from the bombing for 5 years, with a large number of deaths and destructions of buildings. Here we use the basic structure of this picture, the radial lines of the ash brought by bombs

In the 1940s, dwellings were all in timber, which is extremely fragile under the bombing; many of them became ruins. Several intersections are found in this picture of ruins, which could be used to achieve an effect of chaos

The picture exhibits a depth-from the man bearing two buckets of water to the ruins in the distance. Fragments of walls and columns are on the way. Such a winding path with obstacles continuously appearing in the view is what we try to achieve in this segment.

2. The Cultural Revolution- Conflict-Sharpness

In the revolution the cultural heritage in China were damaged severely. This was an unilateral strike without any resistance, so the forces come from all directions but concentrate on one point..

This is when "Capitalist roaders" were being persecuted. Their heads, the ropes hanging on their necks and the boards with their names formed several triangles, which represent the unbalance in power.

The two groups of people involved in the conflict has an obvious disparity in their numbers-one has the largest group of supporters, the proletariat, while the other is only a small segment of the society. Therefore the force from the larger group is much stronger than the force of resistance.

3. The Construction Time- Development-Solidity

Before and after the Cultural Revolution, China experienced several construction periods. Here we integrate them together to have a concentration and guarantee a continuity from the chaos to the sharpness. The picture shows an area full of factories.

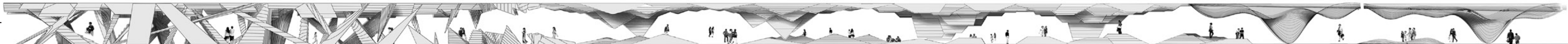
Inside a factory, hard and straight lines are all through the view. In the perspective, the squares and rectangles become several trapezoid.

Those neat straight lines can also be seen in the urban area of Chongqing that time, appearing with the new roads and tall modern buildings. The city landscape shows a variety on heights, which enriches one's experience when he walk in the city

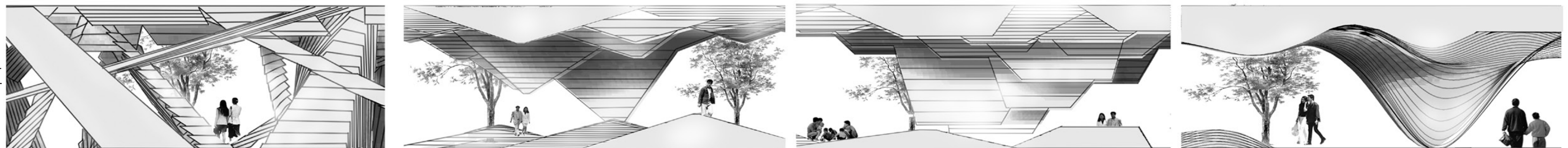
4. The Internet Era- Globalization- Fluidity

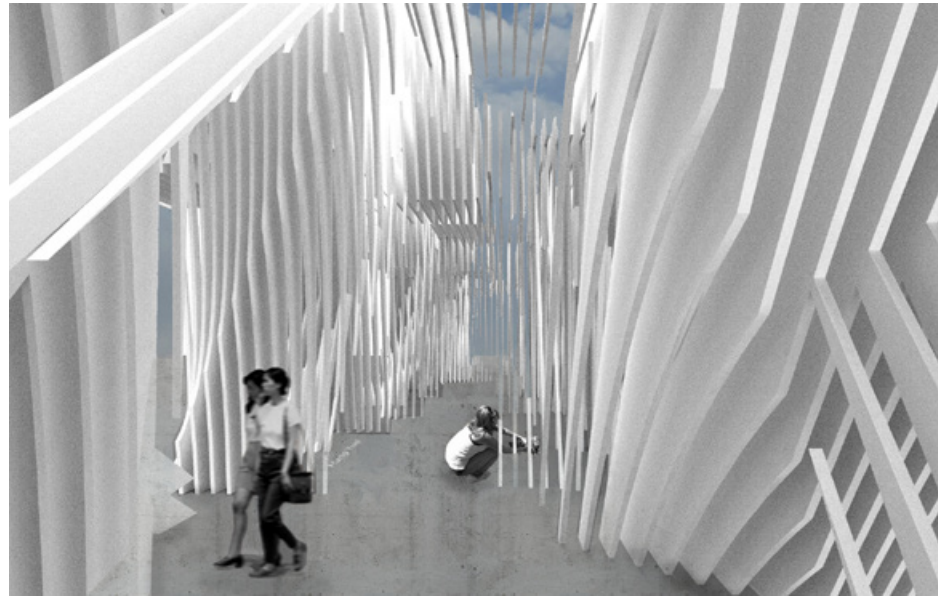
The Fold;
The theory suggests a new concept on space, which is a flowing and infinite variation. It is all in curve, create space by folding itself without traditional partition walls. From 1990s an increasing number of architects began to use this theory to support their designs, and the flow of space is becoming the representation of the architectural language in the new era.

LONG SECTION

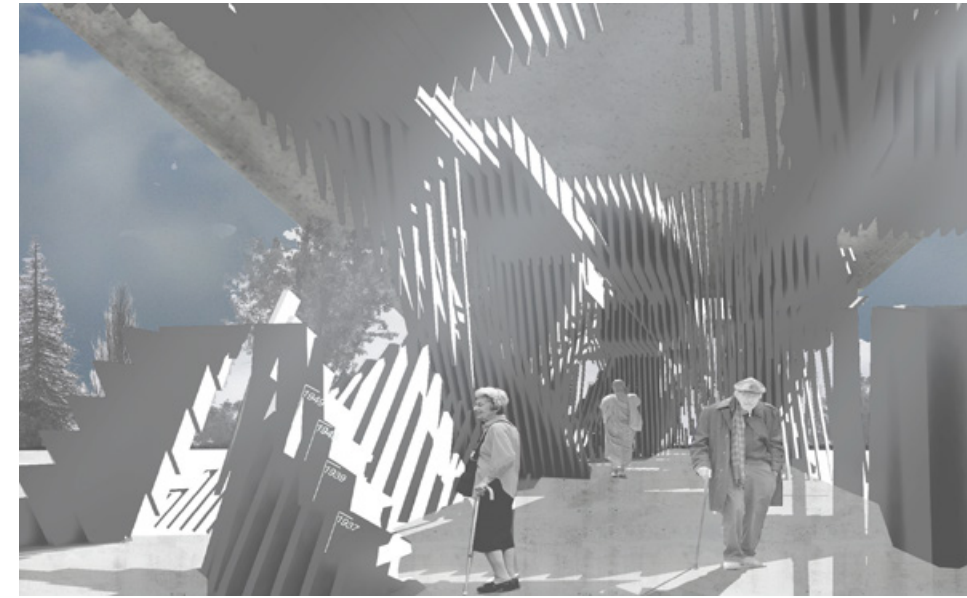


PARTIAL SECTION





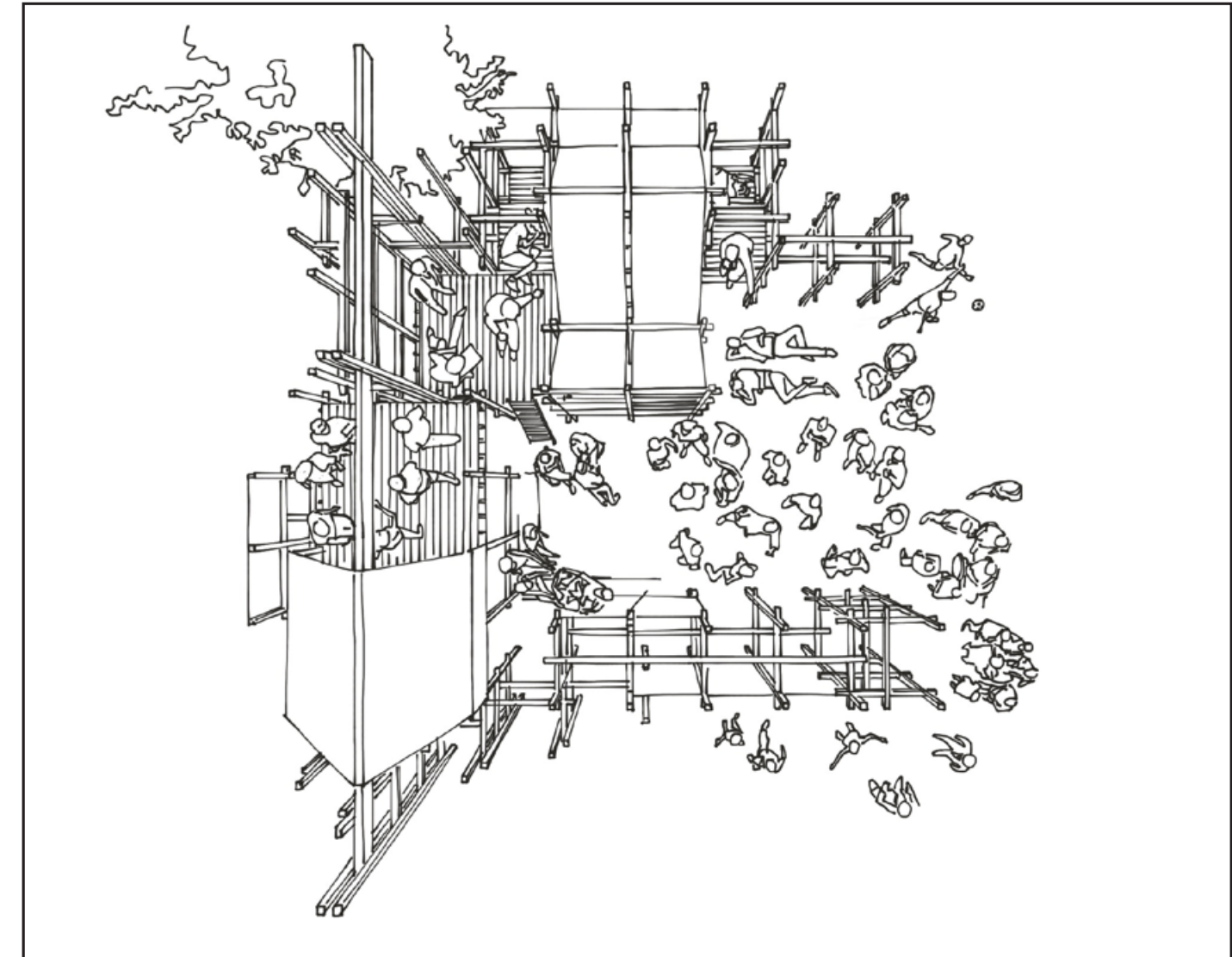
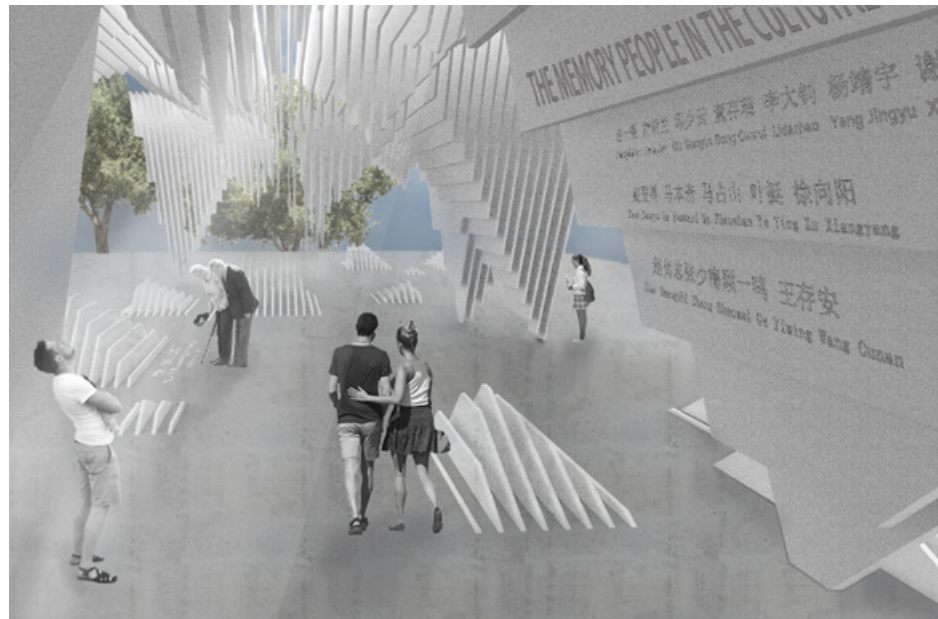
I. War Time- Deconstruction- Chaos



II. The Cultural Revolution- Conflict-Sharpness

III. The Construction Time- Development-Solidity

IV. The Internet Era- Globalization- Fluidity



[CLOISTER AND CHAPTER]

--Wood Installation

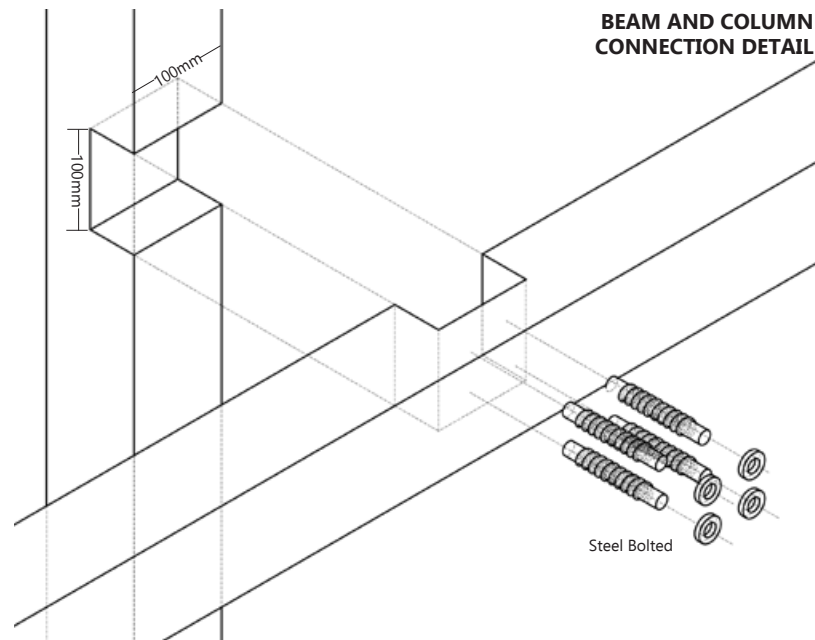
Group Work Site:Csóromföde, Hungary July 2017

Team Leader : Dr Neal Hitch, (San Diego State University, Imperial Valley Desert Museum, California, USA) and Lukas Hitch

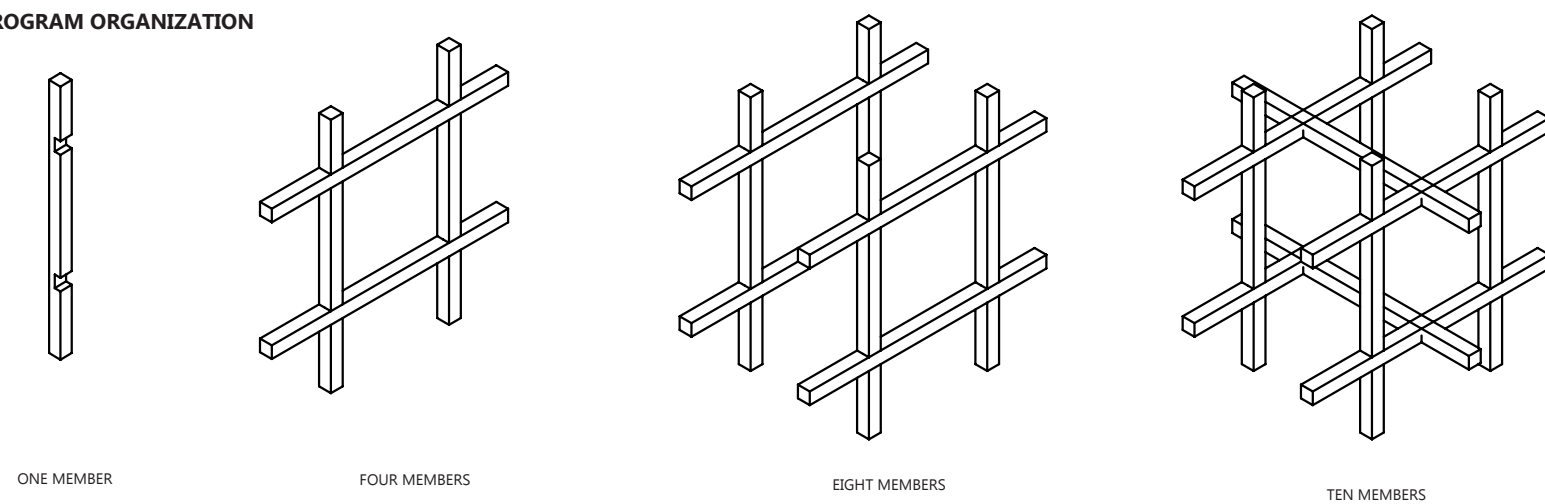
As architects, we all have an idea of what the ideal village is like, but what makes this programme interesting is that, once we are confronted with the actual needs of a community, constraints of the terrain, or the opinion of your neighbour, you need to be open to adapt.

---Johanna Muszbek, curator of Project Village

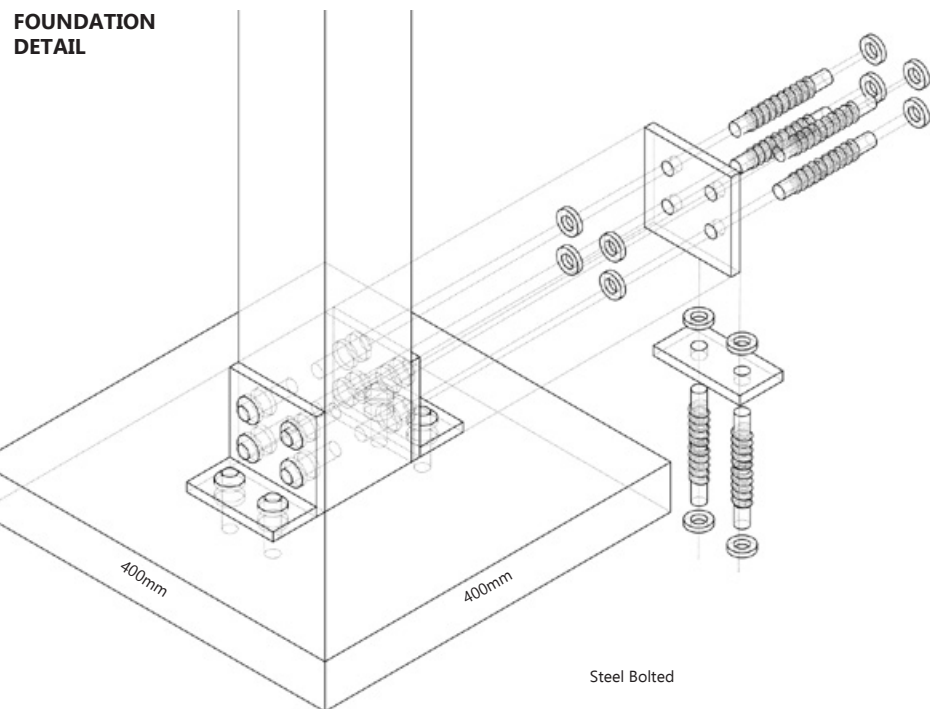
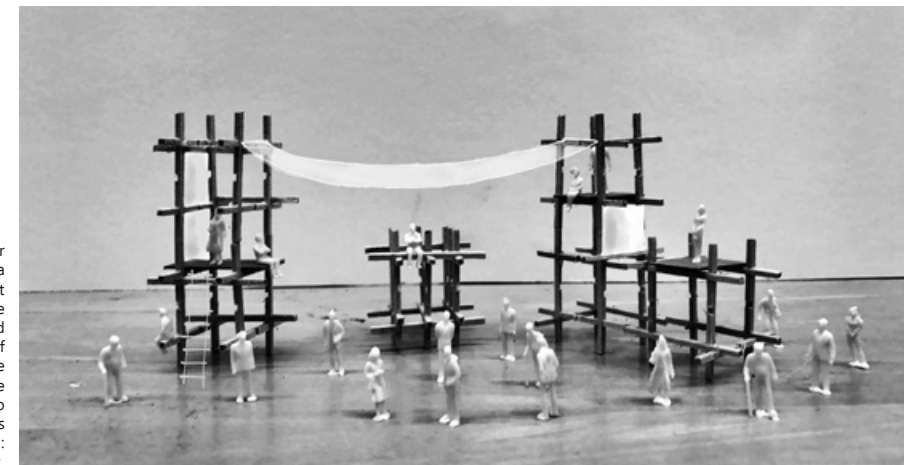
The cathedral in the Hello Wood village is under construction and has been expanding now for a second year running. This year, the church built on the ruins of the settlement that existed here three hundred years ago has been expanded with further elements: the communal spaces of a chapter house and a cloister. A special feature of the latter is that it is always open towards the interior garden of the chapter house, and so though it shuts out the outside world, this does not mean that its structure is not welcoming: inside, it makes space for people together.



PROGRAM ORGANIZATION



The cathedral in the Hello Wood village is under construction and has been expanding now for a second year running. This year, the church built on the ruins of the settlement that existed here three hundred years ago has been expanded with further elements: the communal spaces of a chapter house and a cloister. A special feature of the latter is that it is always open towards the interior garden of the chapter house, and so though it shuts out the outside world, this does not mean that its structure is not welcoming: inside, it makes space for people together.



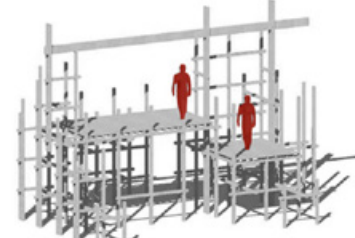
WORKING PROCESS

THE ORGANIZATION DEVELOPMENT

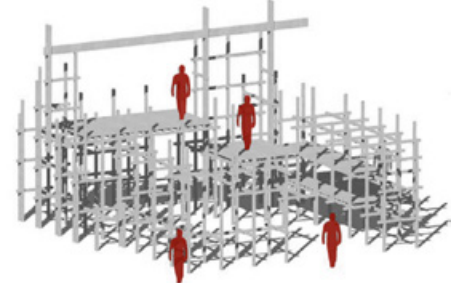
With a simple grid pattern to define different space, from the same size to a variety of sizes, from a single function to a variety of functions, non-closed space gives a strong penetration, interoperability, and promote people's community, which could produce more possibilities.



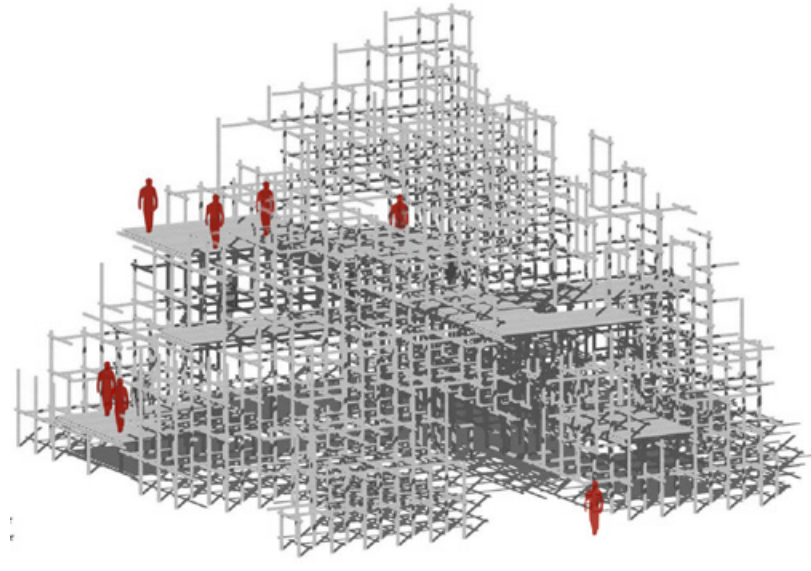
HOUSE UNIT



CATHEDRAL 2016



CLOSTER AND CHAPTER HOUSE 2017



MOUNTAIN

